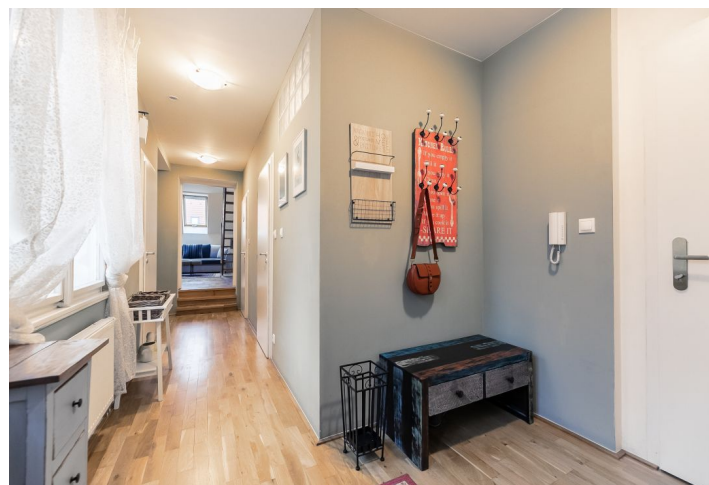




## Apartment Two-bedroom (3+1)

Rented

98 m<sup>2</sup>, Prague 7, Holešovice, Tusarova





## Apartment Two-bedroom (3+1)

Rented

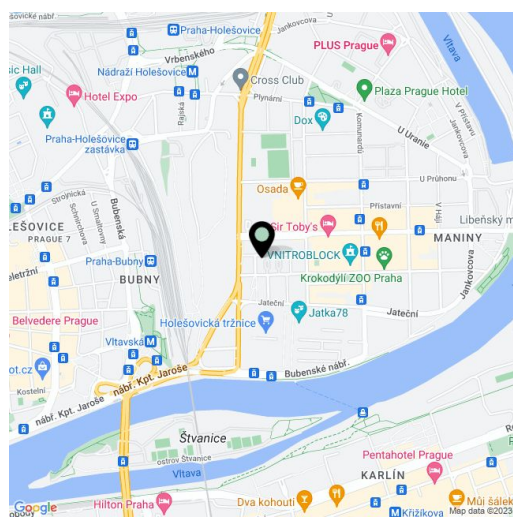
98 m<sup>2</sup>, Prague 7, Holešovice, Tusarova

Total area	98 m <sup>2</sup>
Parking	Garage parking nearby.
Garage	Yes
Cellar	-
PENB	G
Reference number	34186
Available from	Immediately

This fully furnished 2-bedroom split-level attic apartment is on the fifth top floor of a well kept residential building with a lift. Situated on a quiet street in close vicinity of the Vnitroblok multi-purpose center, near a bus and tram stop, only a few stops from the Nádraží Holešovice, Palmovka, and Vltavská metro stations. Located in a vibrant neighborhood of Holešovice with full amenities within easy reach and quick access to the city center, with many trendy cafes, restaurants, bistros, and cultural venues nearby, incl. the La Fabrika Theater, the Jatka 78 theater venue, and the DOX Center for Contemporary Art.

The interior features a fully fitted eat-in kitchen, a bedroom, and a living room with stairs leading up to the second bedroom. There is a shower room, a separate toilet, a utility room, and an entrance hall.

**Solid wood parquet floors, teak floors** in the bathroom and the toilet, security entry door, independent gas boiler, washing machine, dishwasher, induction cooktop, kitchenware, TV, WiFi. **Parking** is available in a nearby **garage** at an additional fee. Service charges and water deposit: CZK 700/month. Gas and electricity are billed separately.



\* Area of the unit according to the Civil Code. The area consists of the sum total area of the entire unit bounded by perimeter walls.