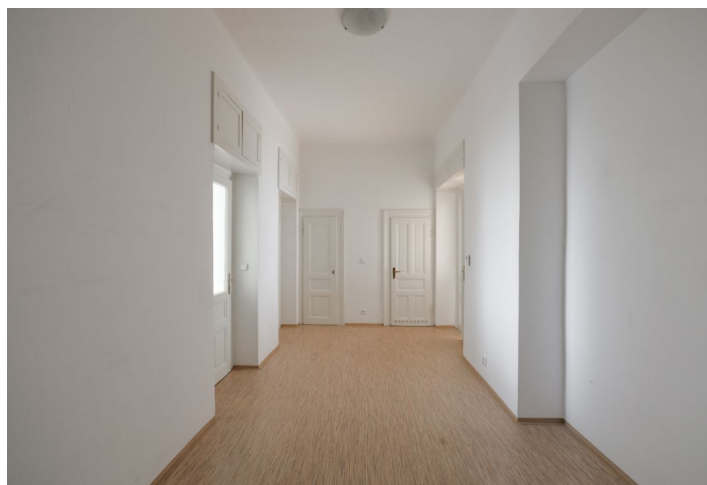
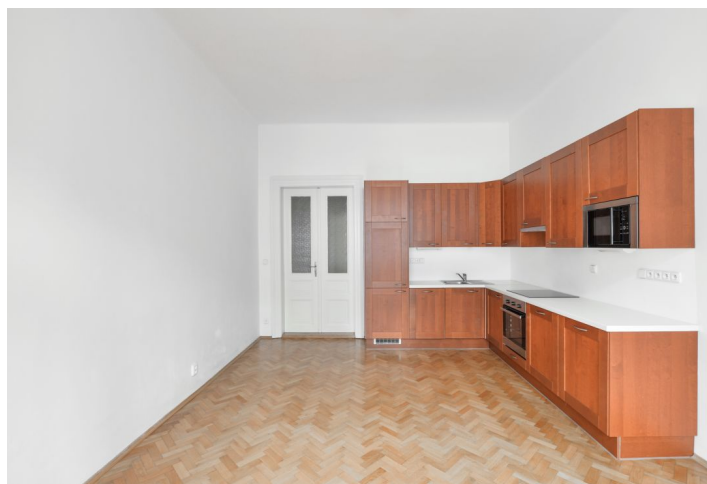




## Apartment Two-bedroom (3+kk)

Rented

100 m<sup>2</sup>, Prague 2, Vinohrady, Na Švihance





## Apartment Two-bedroom (3+kk)

Rented

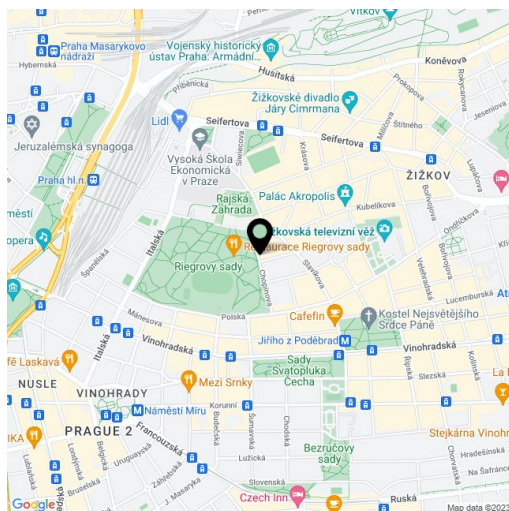
100 m<sup>2</sup>, Prague 2, Vinohrady, Na Švihance

Total area	100 m <sup>2</sup>
Parking	-
Cellar	-
PENB	G
Reference number	34341
Available from	Immediately

Benefiting from a wonderful location next to the Riegrovy sady park, this is a fully refurbished 2-bedroom apartment with a balcony, on the third floor of a renovated residential building with a lift. Located just a short walk from Jiřího z Poděbrad Square with a metro station, rich amenities and a very popular regular produce market.

The interior includes a living room with a dining area, a fully fitted open plan kitchen and balcony access, two separate bedrooms facing the green courtyard, a bathroom with a bathtub, a separate toilet, a walk-in closet / storage room, and a large central entrance hall.

Preserved original details, high ceilings, solid wood parquet floors, linoleum, tiles, security entry door, gas heating, dishwasher, camera system. Monthly deposit for service charges, water and heating: CZK 3000. Electricity is billed separately (transfer to the tenant).



\* Area of the unit according to the Civil Code. The area consists of the sum total area of the entire unit bounded by perimeter walls.