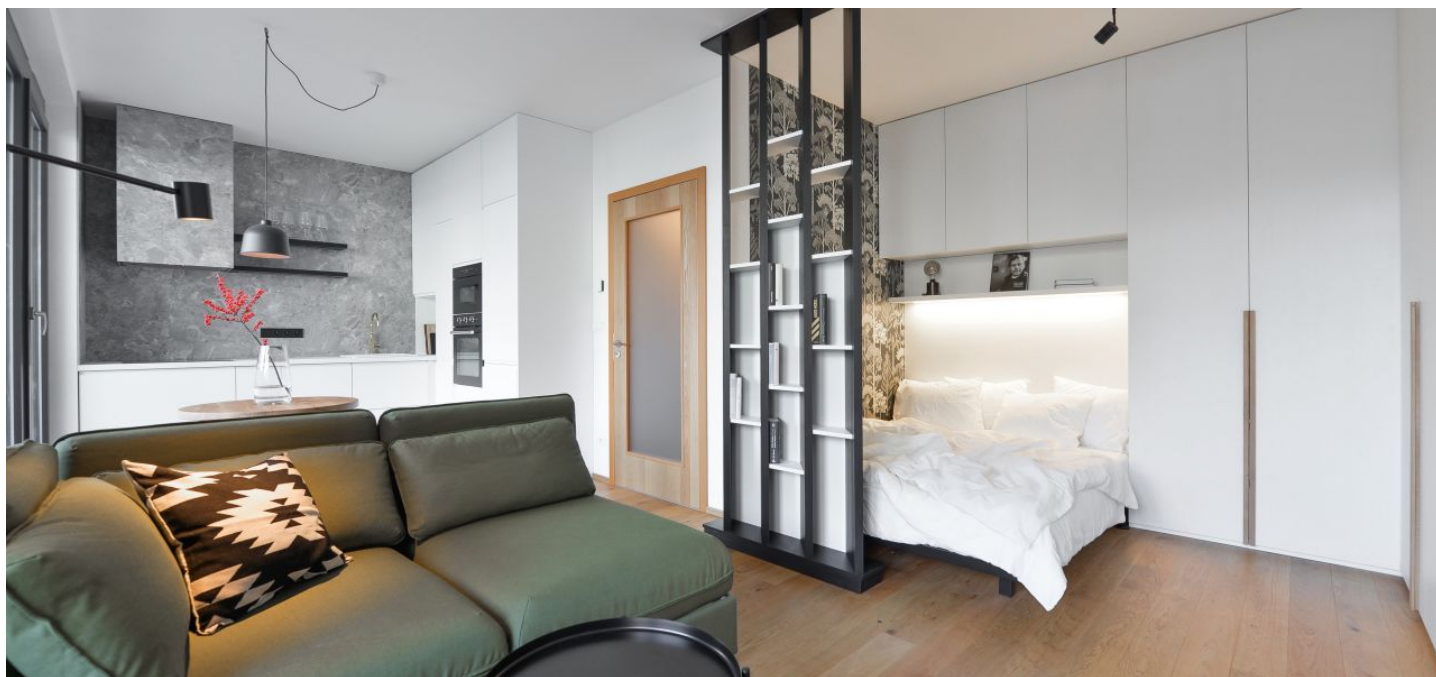




## Apartment Studio (1+kk)

41 m<sup>2</sup>, Prague 7, Holešovice, Osadní

Rented





## Apartment Studio (1+kk)

Rented

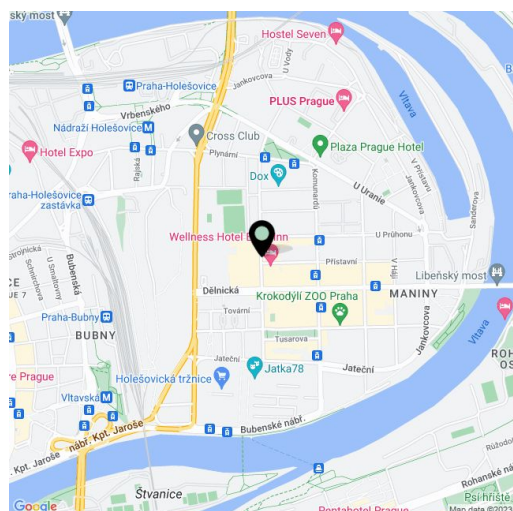
41 m<sup>2</sup>, Prague 7, Holešovice, Osadní

Total area	53 m <sup>2</sup>
Floor area*	41 m <sup>2</sup>
Terrace	12 m <sup>2</sup>
Parking	-
Cellar	Yes
Service price	Monthly deposit for services, water, and heating: CZK 3,500. Electricity is billed separately.
PENB	B
Reference number	34347
Available from	Immediately

This completely furnished studio apartment with a 12 m<sup>2</sup> terrace is on the 1st floor of the Vivus Osadní residential project with an elevator, located in a sought-after, rapidly developing part of Holešovice. The Nádraží Holešovice, Palmovka, and Vltavská metro stations are a few tram stops away, and the DOX Center for Contemporary Art, La Fabrika theater, and Vnitroblok cultural center are close-by.

The interior features a living room with a bedroom zone, a fully fitted open plan kitchen, and large French windows leading to the **terrace**, a bathroom with a bathtub, a toilet and a bidet shower, and an entrance hall.

**Wooden floors**, large-format tiles, built-in wardrobes and storage, central heating, underfloor heating in the bathroom, Univers automatic exterior blinds, washing machine, dryer, **cellar**.



\* Area of the unit according to the Civil Code. The area consists of the sum total area of the entire unit bounded by perimeter walls.