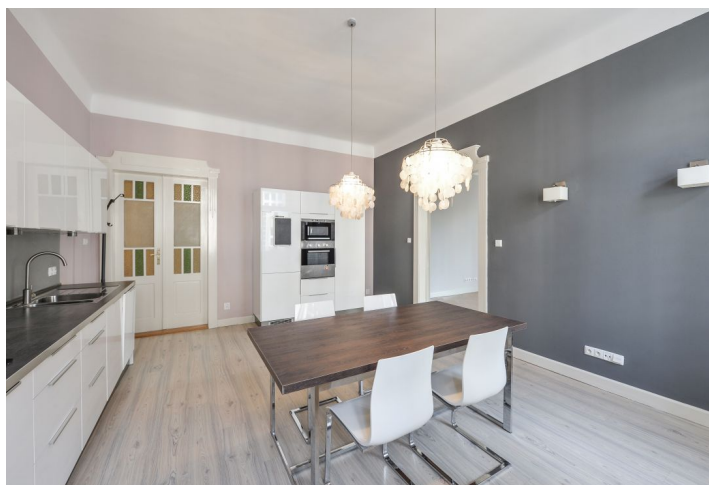
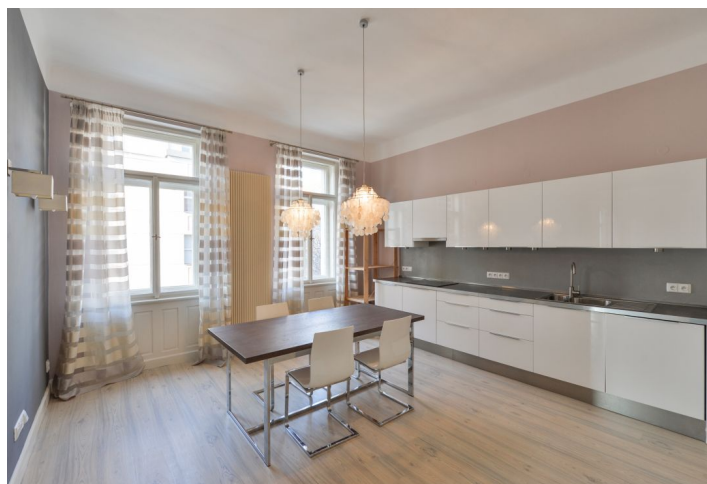




## Apartment Two-bedroom (3+1)

Rented

113 m<sup>2</sup>, Prague 6, Dejvice, Eliášova





## Apartment Two-bedroom (3+1)

Rented

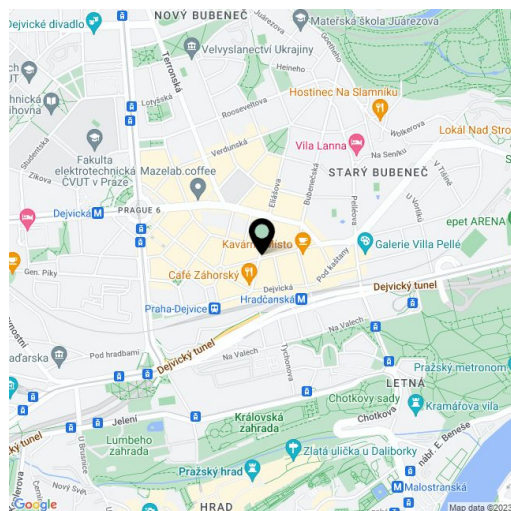
113 m<sup>2</sup>, Prague 6, Dejvice, Eliášova

Total area	113 m <sup>2</sup>
Parking	-
Cellar	-
PENB	G
Reference number	3435
Available from	Immediately

This nicely renovated 2nd floor 2-bedroom apartment for rent with a small balcony is in a partly reconstructed building with preserved architectural details and no elevator. Located in a lively Prague 6 neighborhood with good connections to international schools in Prague 5 and 6 as well as the airport. The Hradčanská and Dejvická metro stations are just minutes away and it takes about 15 minutes to walk to the Prague Castle.

Fully fitted and equipped contemporary kitchen with a double door leading to the living room, a bathroom with a bathtub, bidet, and toilet, a separate toilet, and a utility room with space for a washing machine.

Balcony, wooden floating floors, marmoleum, original renovated doors, dishwasher, ceramic cooktop, recessed lighting, satellite TV connection. Common building charges and water CZK 800/month per person. Electricity and gas is billed separately.



\* Area of the unit according to the Civil Code. The area consists of the sum total area of the entire unit bounded by perimeter walls.



# Apartment Two-bedroom (3+1)

113 m<sup>2</sup>, Prague 6, Dejvice, Eliášova

**Rented**

