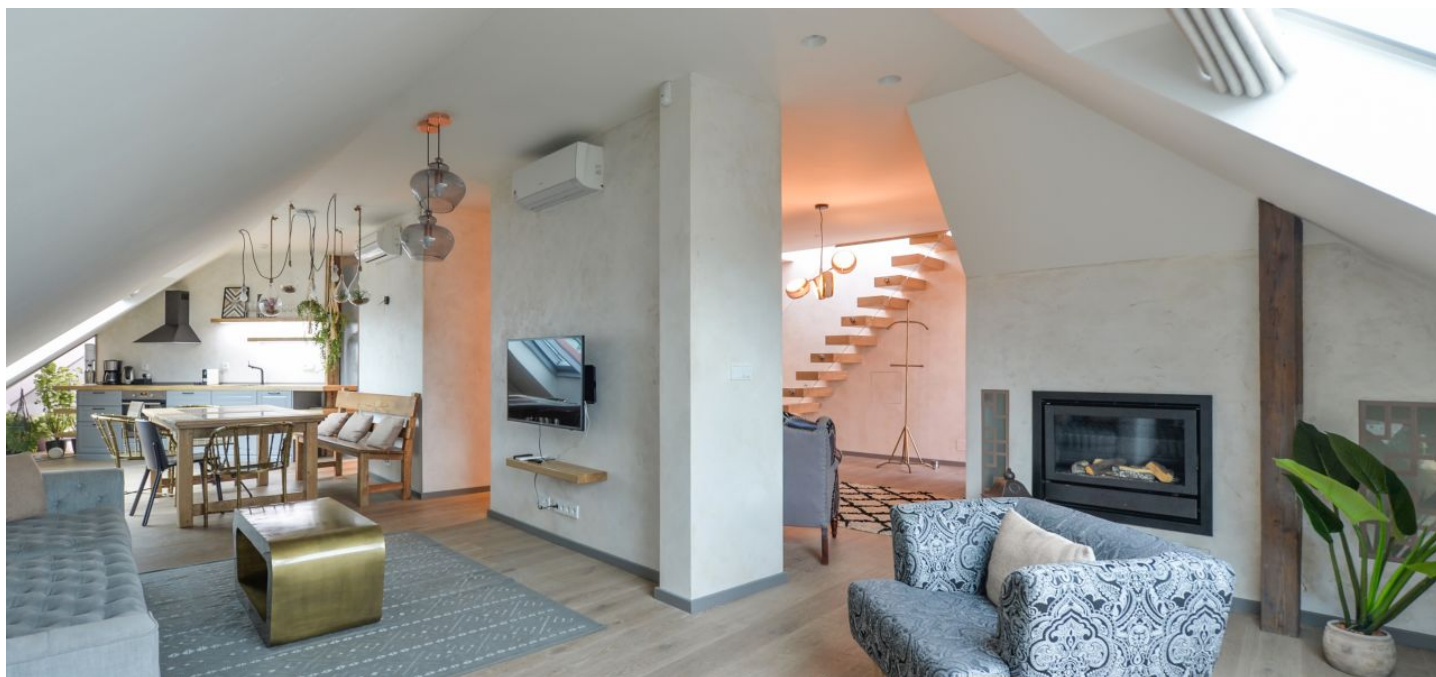




Apartment Three-bedroom (4+kk)

Rented

237 m², Prague 1, Nové Město, Petřské náměstí





Apartment Three-bedroom (4+kk)

Rented

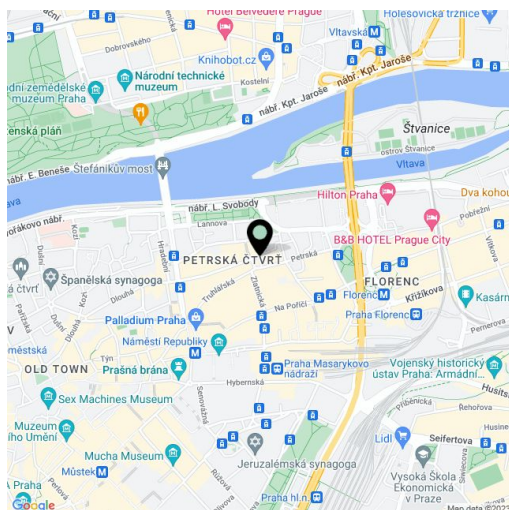
237 m², Prague 1, Nové Město, Petřské náměstí

Total area	293 m ²
Floor area*	237 m ²
Terrace	56 m ²
Parking	-
Cellar	-
PENB	G
Reference number	34429
Available from	Immediately

Spacious flat with a rooftop terrace and panoramic views of the city on the 5th floor of a beautiful apartment building with a lift, directly on Petřské náměstí Square, just a few steps away from náměstí Republiky Square, the Masaryk Railway Station, tram stops, and metro.

The apartment offers a living room with a kitchenette, 3 bedrooms, 2 bathrooms, a separate toilet, and a large rooftop terrace with a Jacuzzi that boasts **views of the Prague Castle and Vítkov Hill.**

A prestigious location in the city center, with a number of cafes and restaurants, theaters, galleries, sports centers, and shopping malls. Common building charges CZK 1,000/persons/month. Energies are billed separately. Available from February 15, 2022.



* Area of the unit according to the Civil Code. The area consists of the sum total area of the entire unit bounded by perimeter walls.



Apartment Three-bedroom (4+kk)

237 m², Prague 1, Nové Město, Petřské náměstí

Rented

