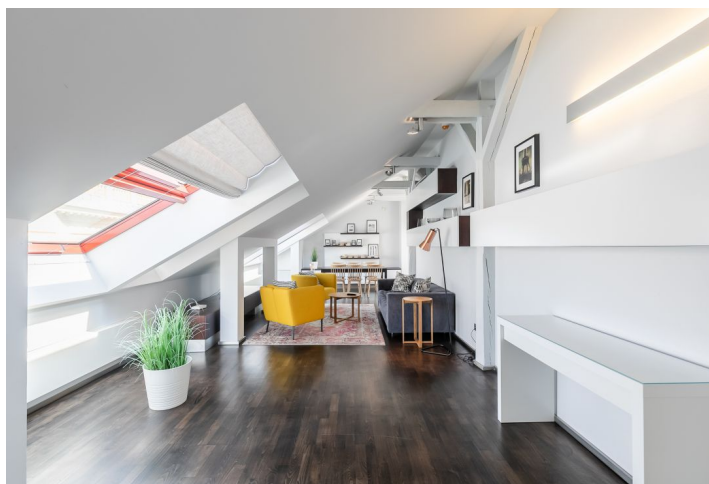
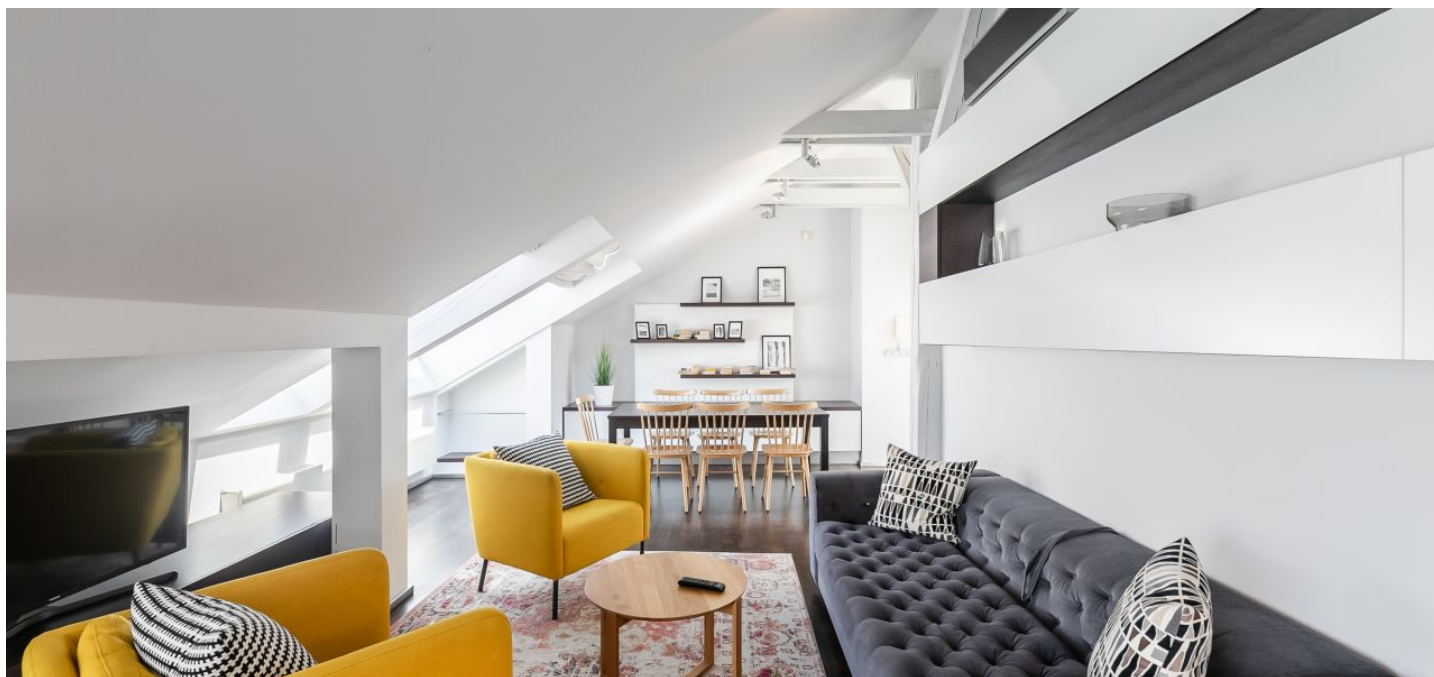




Apartment Two-bedroom (3+kk)

Rented

165 m², Prague 1, Nové Město, Školská





Apartment Two-bedroom (3+kk)

Rented

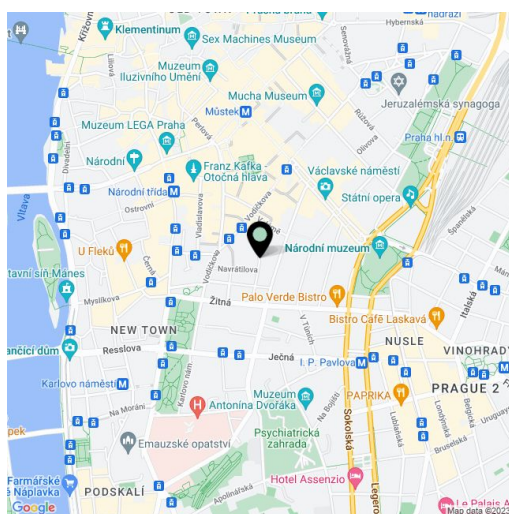
165 m², Prague 1, Nové Město, Školská

Total area	165 m ²
Parking	-
Cellar	-
PENB	G
Reference number	34433
Available from	Immediately

Fully furnished spacious loft attic flat with air-conditioning, located on the 5th top floor of a five-story building with a lift in the very center of Prague, just a few minutes' walk from Wenceslas Square and Charles Square. Everything is within walking distance or easily accessible by public transport, close to all metro and tram stops.

The layout of the apartment consists of a large living room with a kitchen, 2 bedrooms, a **walk-in closet**, spacious bathroom (with bathtub and shower), separate toilet and utility room. The windows of the living room and 1 bedroom provide a nice **view of Prague Castle**.

High standard modern apartment with wooden atelier windows with shutters, wooden floors, security entrance door, gas boiler. Common building charges CZK 1000/person/month. Energies are billed separately. Available from January 2022, earlier upon agreement.



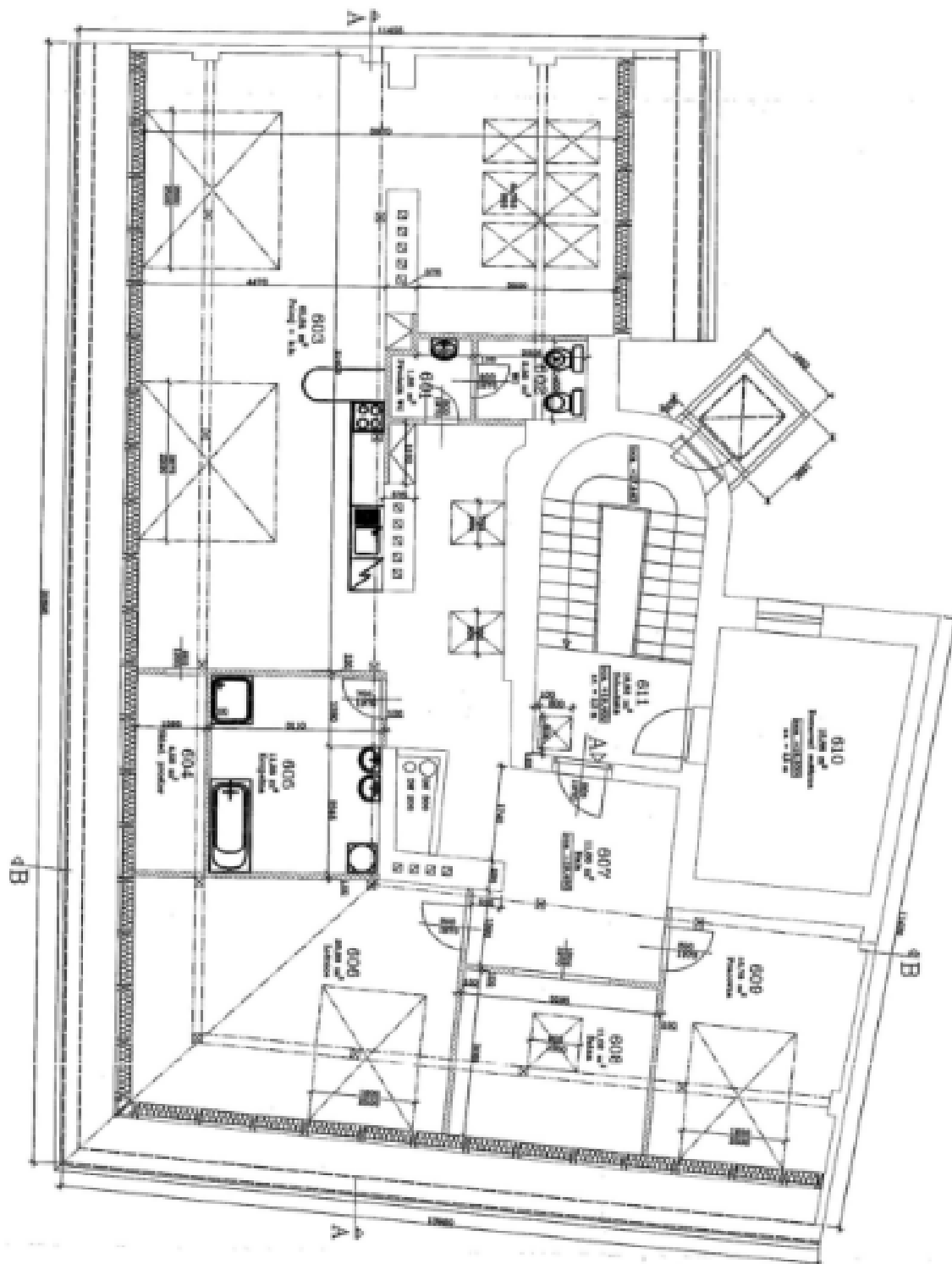
* Area of the unit according to the Civil Code. The area consists of the sum total area of the entire unit bounded by perimeter walls.



Apartment Two-bedroom (3+kk)

Rented

165 m², Prague 1, Nové Město, Školská





Apartment Two-bedroom (3+kk)

165 m², Prague 1, Nové Město, Školská

Rented

Tabulka místností

Č. M.	Název místnosti	Plocha [m ²]
Byt A		
601	Předsín WC	1,88
602	WC	2,85
603	Pokoje + k.k.	65,84
604	Sklad. prostor	4,58
605	Koupelna	11,26
606	Ložnice	25,88
607	Hala	11,88
608	Šatna	11,02
609	Pracovna	15,78
Celkem		169,72
Ostatní domovní prostory		
610	Domovní sušárna	15,86
611	Schodiště	16,82
Celkem		32,68
Celkem		202,40