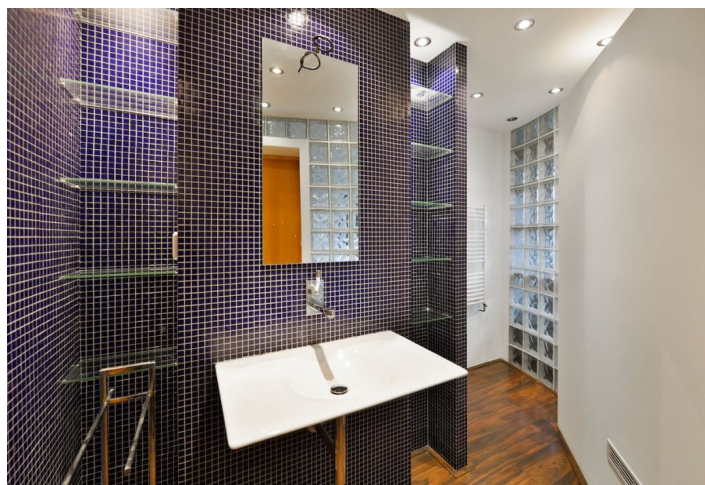
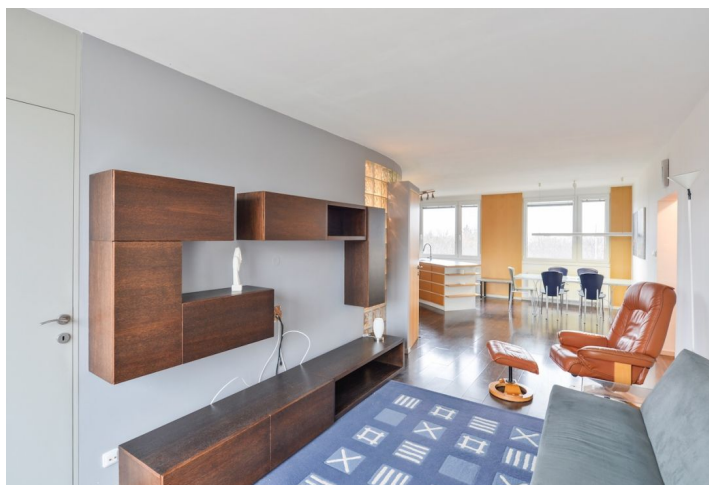
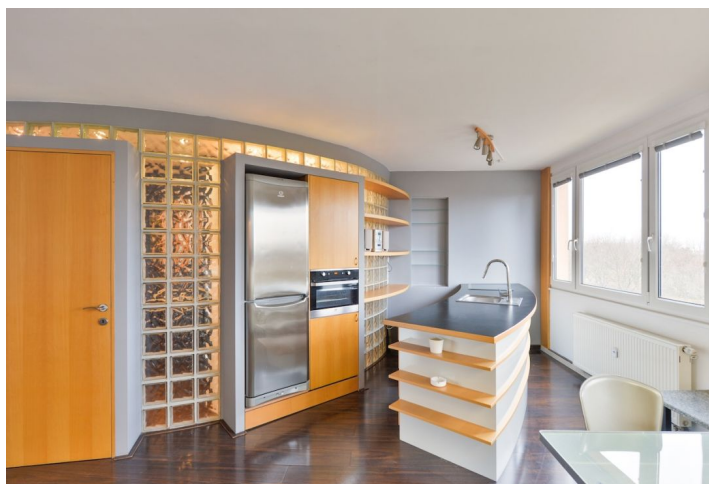




Apartment One-bedroom (2+kk)

Rented

64 m², Prague 4, Podolí, Milevská





Apartment One-bedroom (2+kk)

Rented

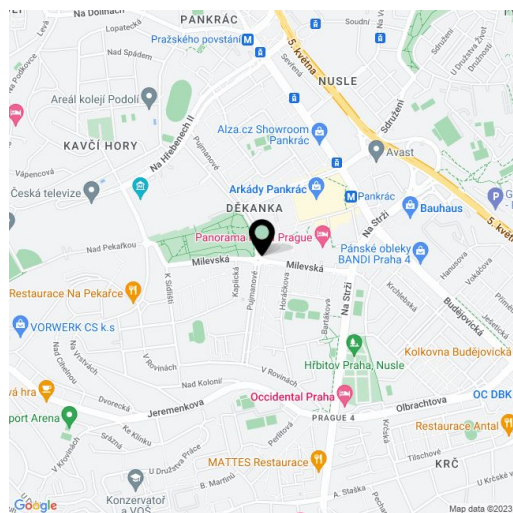
64 m², Prague 4, Podolí, Milevská

Total area	70 m ²
Floor area*	64 m ²
Loggia	6 m ²
Parking	-
Cellar	-
PENB	G
Reference number	34455
Available from	Immediately

This furnished renovated 1-bedroom apartment with an enclosed balcony offers views of the adjacent Central Park Pankrác. It is situated on the third top floor of a well kept residential building with no lift. Located right next to the Central Park, near the Pankrác business zone, just a few minute walk from the Pankrác metro station, and within walking distance of the Kavčí Hory Park.

The quiet, sunny apartment includes a living room with a dining area, a fully fitted open plan kitchen and an **enclosed balcony** with green views, a bedroom with built-in storage, a shower room with a toilet, a **fitted walk-in closet**, and an entrance hall.

Large windows, laminated floors, tiles, security entry door, central heating, blinds, insect nets, TV, home cinema system, washing machine, dishwasher, bike storage in the building. Service charges and utilities are billed separately.



* Area of the unit according to the Civil Code. The area consists of the sum total area of the entire unit bounded by perimeter walls.