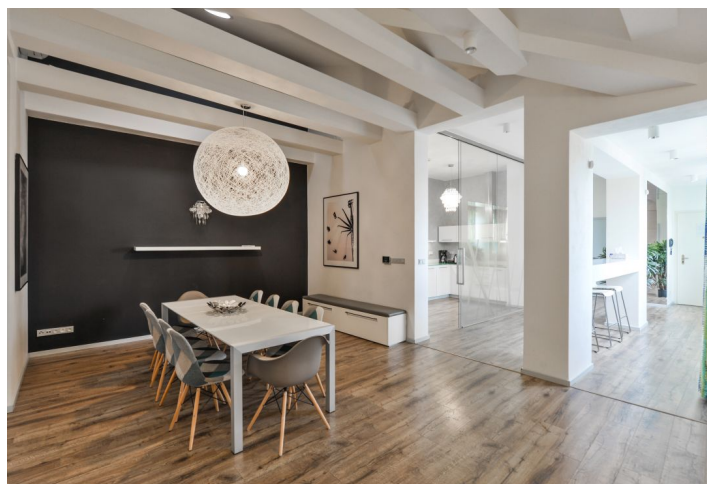




## Apartment Four-bedroom (5+kk)

Rented

161 m<sup>2</sup>, Prague 1, Nové Město, Jindřišská





## Apartment Four-bedroom (5+kk)

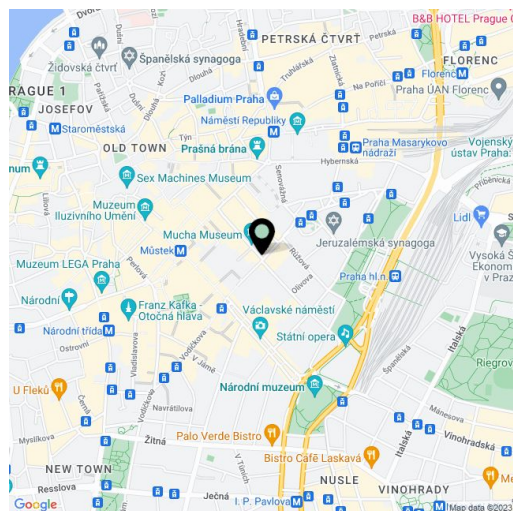
**Rented**161 m<sup>2</sup>, Prague 1, Nové Město, Jindřišská

Total area	161 m <sup>2</sup>
Parking	-
Cellar	-
PENB	G
Reference number	34484
Available from	Immediately

This spacious, fully furnished 4-bedroom 3-bathroom apartment on the 6th floor of a well-maintained historic building with an elevator is located in the very center of Prague, just a few minutes from the Main Railway Station, Masaryk Railway Station, and Wenceslas Square with all three Prague metro lines and full amenities in the vicinity. A great location for people who enjoy city life and the convenience of being able to walk to just about anywhere. There is a tram stop just steps from the building, and within walking distance there are numerous historic sights, cultural venues, quality services, shops, cafes, restaurants, and more.

The apartment features an open entrance hall with a breakfast bar, a fully fitted kitchen separated by a glass wall, a comfortable living room with a dining area, 4 bedrooms, 3 bathrooms (two walk-in showers/bathtub, toilet), and a utility area.

**High standard equipment, air-conditioning, wooden floors, tiles, security entry door, built-in wardrobes in the corridor and the hall, master switch, gas boiler, washer, dryer, induction cooktop, dishwasher, microwave oven, TV, alarm, satellite reception, garden furniture.** Service charges and water bills: CZK 1,000/person/month. Gas and electricity will be transferred to the tenant. Available from mid August 2022.



\* Area of the unit according to the Civil Code. The area consists of the sum total area of the entire unit bounded by perimeter walls.