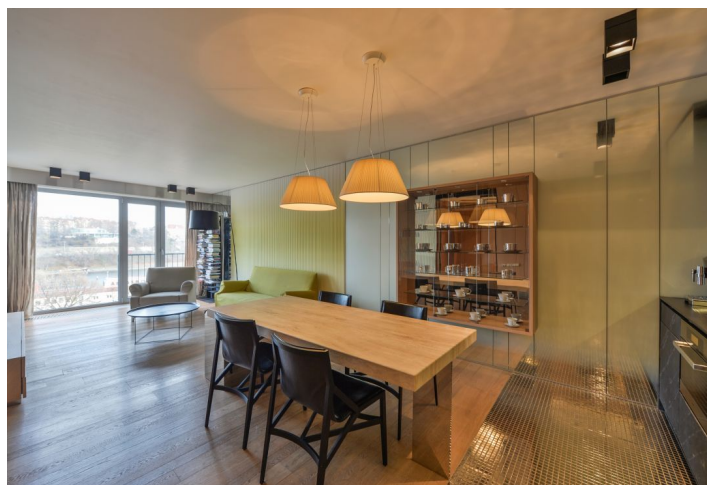
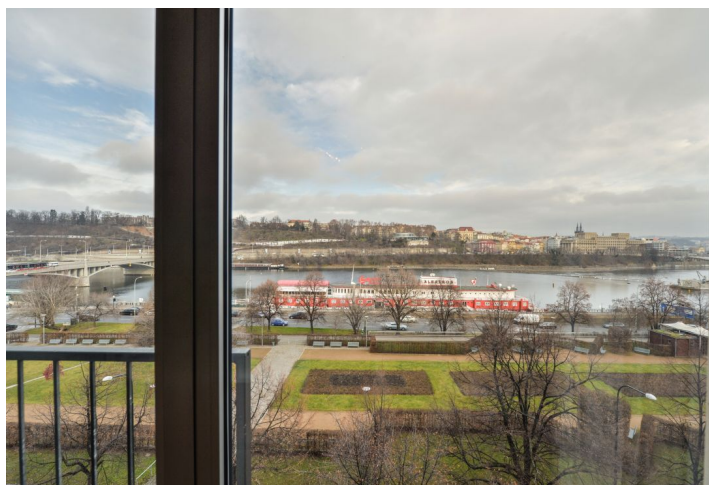
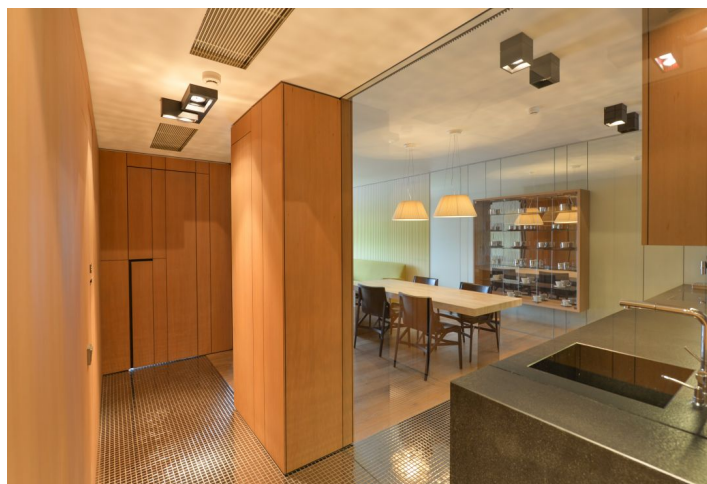




## Apartment One-bedroom (2+kk)

Rented

70 m<sup>2</sup>, Prague 1, Nové Město, Lannova





## Apartment One-bedroom (2+kk)

Rented

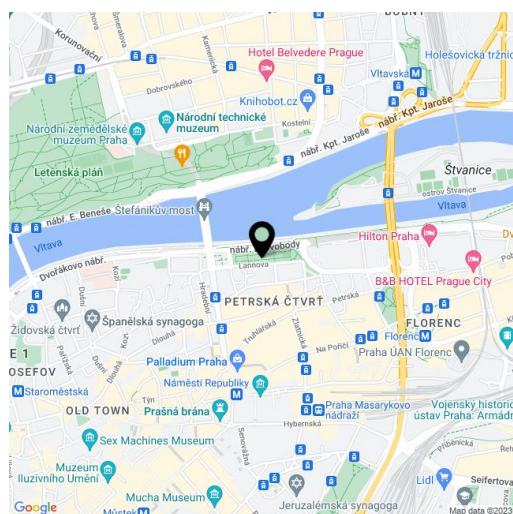
70 m<sup>2</sup>, Prague 1, Nové Město, Lannova

Total area	70 m <sup>2</sup>
Parking	-
Cellar	-
PENB	G
Reference number	34532
Available from	Immediately

Boasting a wonderful location and beautiful views of the adjacent park, the Vitava riverbank and the Letná Park, this is a high quality 1-bedroom apartment designed by a renown Czech architect Barbora Škorpilová from the Mimolimit studio, and fully furnished with design furniture. Situated on the 5th floor of the Lannova Residence building with a lift, a 24/7 reception and security, and underground parking, right opposite a green park. Located in a quiet city center area within walking distance of rich amenities, the Letná Park and Florenc and Náměstí Republiky metro stations, near the Hilton Hotel, and convenient to the D1 highway.

The interior features a living room with a dining area and a fully fitted open plan kitchen, a bedroom with built-in wardrobes, a bathroom including a bathtub and a toilet, plus an entrance hall with built-in wardrobes and storage. There are **floor-to-ceiling windows in both main rooms providing for a lot of natural light and offering beautiful green views.**

Quality equipment and furnishings, **hardwood floors**, mosaic tiling, security entry door, automatic external blinds, travertine dining table, **Miele** appliances, washer / dryer, dishwasher, steam oven, induction cooktop, coffee maker, central heating, cooling system, **Loewe** TV, alarm. Deposit for service charges, water and heating: CZK 7500/month. Electricity is billed separately.



\* Area of the unit according to the Civil Code. The area consists of the sum total area of the entire unit bounded by perimeter walls.