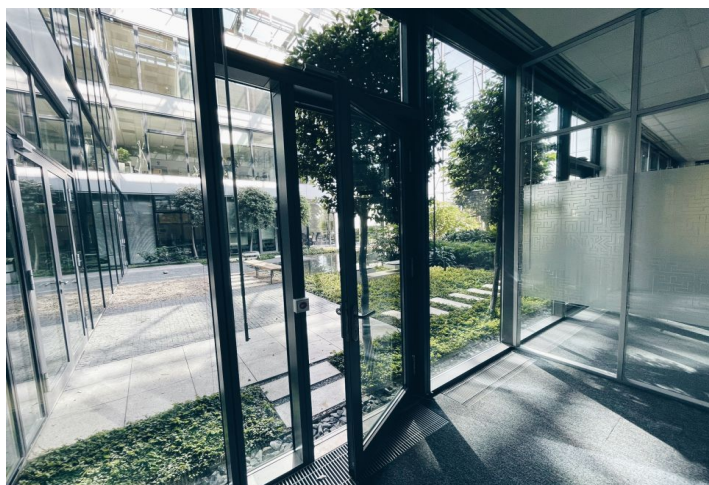
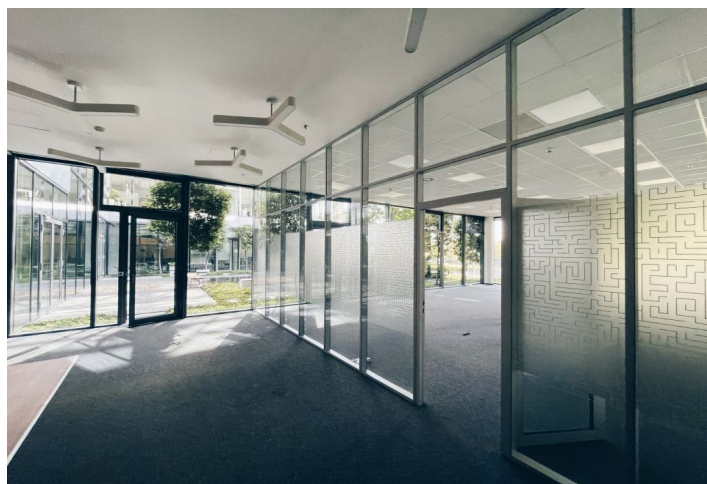
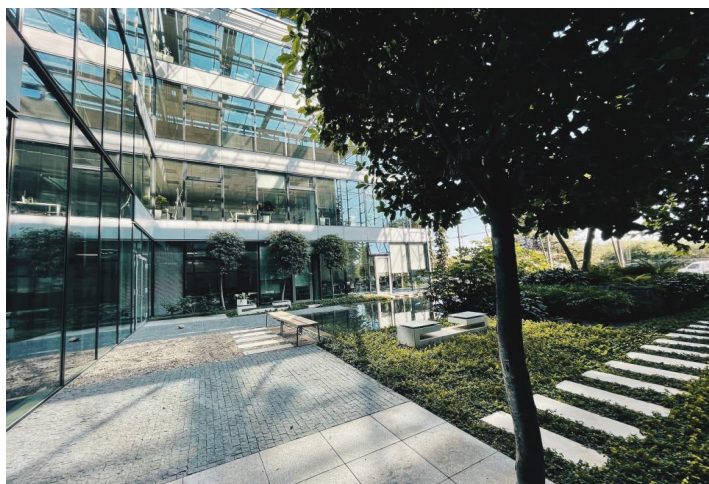




Office space

Prague 4, Chodov, V parku

€ 15.20 - 15.75 / m² | CZK 381 - 395 / m²



**Office space**

Prague 4, Chodov, V parku

€ 15.20 - 15.75 / m² | CZK 381 - 395 / m²

Service price	155 CZK monthly per m ²
Available area	559 m ²
Cellar	-
Parking	EUR 110 / ps / month
PENB	G
Reference number	34576

Office space for lease on the ground floor in a campus-style office community business park. The site includes 12 state-of-the-art superior-standard buildings. The buildings are situated in a landscaped garden that consists of carefully selected trees, plants, and grasses and a network of streams, fountains, and pools. Atrium gardens and vestibules connect each building with the outside garden and create a unique office environment.

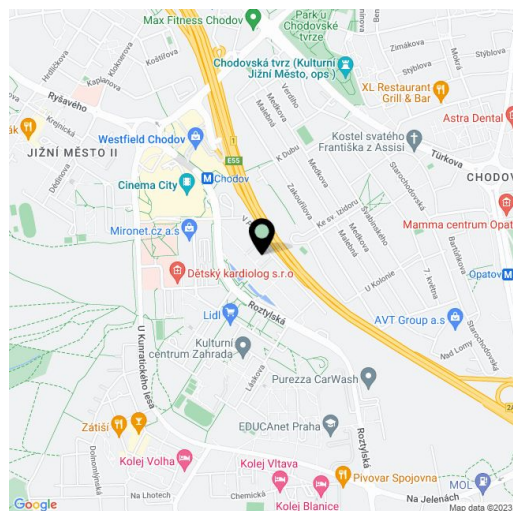
Location:

The project is situated in Prague 4—the Czech capital's fastest growing big business and retail destination—adjacent to the Prague-Budapest-Vienna highway and 50 m from the Chodov metro station (line C) and transportation hub. The site is also located next to one of Prague's most ambitious retail-entertainment projects: the Chodov shopping center that forms an integral part of this vibrant new city quarter.

Features and services:

- High-speed broadband fiber optic connections
- Shared lobby with a reception
- 24/7 access
- High-speed and service
- Elevators
- Secured networks
- Air conditioning
- Raised floors
- Lighting

Rental and service charges listed without VAT. Lessee pays no commission.

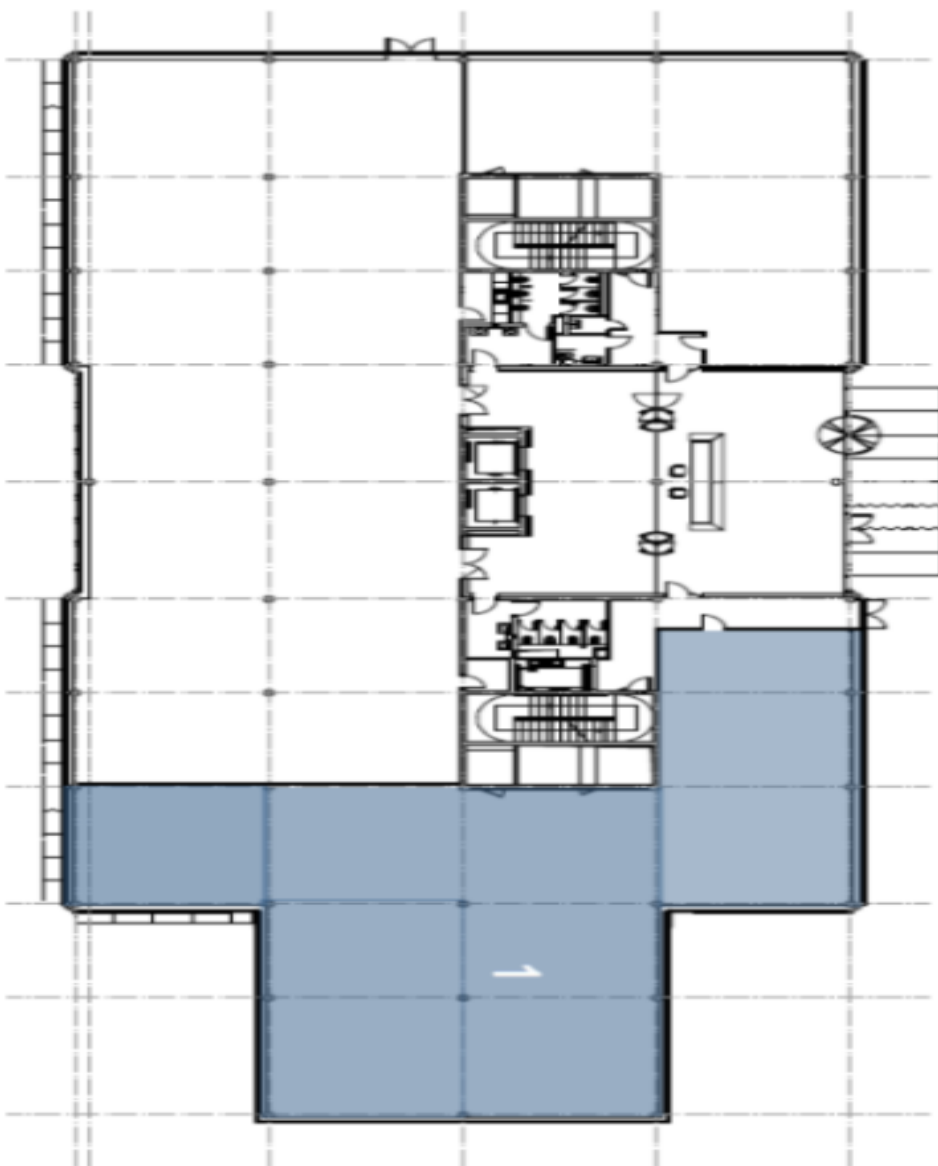




Office space

€ 15.20 - 15.75 / m² | CZK 381 - 395 / m²

Prague 4, Chodov, V parku



Building 09	
Ground Floor (1NP)	
Unit	Size
1	559 m ²