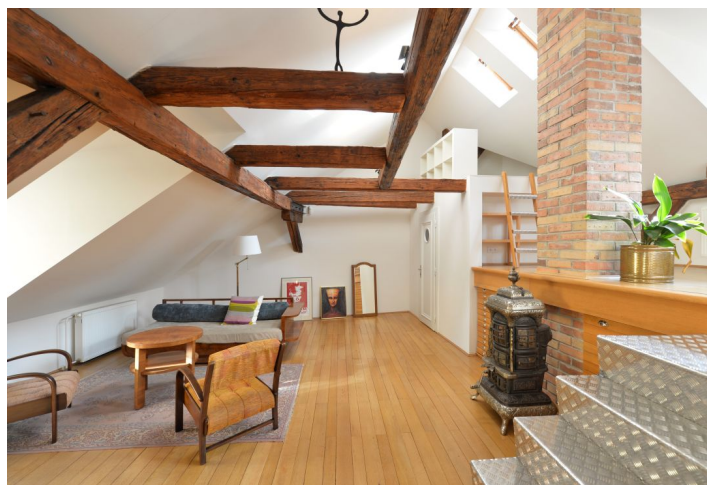




Apartment Studio (1+kk)

73 m², Prague 1, Staré Město, Liliová

Rented





Apartment Studio (1+kk)

Rented

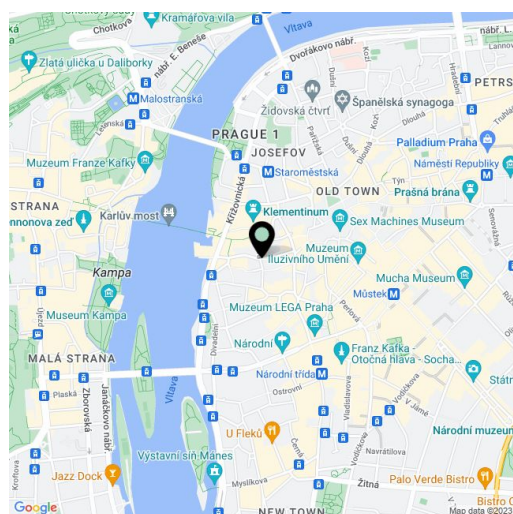
73 m², Prague 1, Staré Město, Liliová

Total area	73 m ²
Parking	-
Cellar	Yes
PENB	G
Reference number	34583
Available from	Immediately

Boasting a distinctive old-world charm and a unique romantic location, this quiet, fully furnished attic studio apartment is situated on the third floor of a listed 15th century building with a beautiful courtyard showcasing a remarkable wooden statue of Saint John of Nepomuk. With numerous preserved original architectural details, the building is located in the historic center of Prague mere steps from Old Town Square and Charles Bridge, in an area abundant with historic sights, quality dining options, cafes, bistros, and bars, within walking distance of the Staroměstská, Národní třída, and Můstek metro stations.

The stylish interior features a spacious open plan living room with a dining area, a fully fitted kitchen, and **two built-in elevated sleeping lofts**, a **walk-in closet**, a bathroom including a bathtub, a separate toilet, and an entrance hall.

Preserved original details, hardwood floors, wooden beams, tiles, built-in storage, decorative American style stove, blinds, gas boiler, washing machine, dishwasher, **cellar**, bike/pram storage. No elevator. Service charges and utilities: approx. CZK 3,000/month.



* Area of the unit according to the Civil Code. The area consists of the sum total area of the entire unit bounded by perimeter walls.