



Industrial space

410 m², Praha 9, Horní Počernice, Sezemická

Ask for price





Industrial space

[Ask for price](#)410 m², Praha 9, Horní Počernice, Sezemická

Total area	410 m ²
Available area for rent	410 m ²
Office area	50 m ²
Ceiling height	10 m
Floor loading capacity	5 t/m ²
Column grid structure	—
Structure	Reinforced concrete structure
PENB	C
Reference number	34597

360 sq.m. of industrial and **50 sq.m.** of office space for lease in a new industrial park situated 15 minutes from the city center (from Prague). The project consists of 28 warehouse buildings; construction of this park commenced 2006.

Location:

The industrial park is situated 15 minutes from Prague's city center, exit 3 on D10 highway (Prague – Mladá Boleslav – Germany). The park is reachable by a shuttle bus – connection to Černý Most (line B) metro station, the Horní Počernice train station is 1 km from the park.

Features and Services:

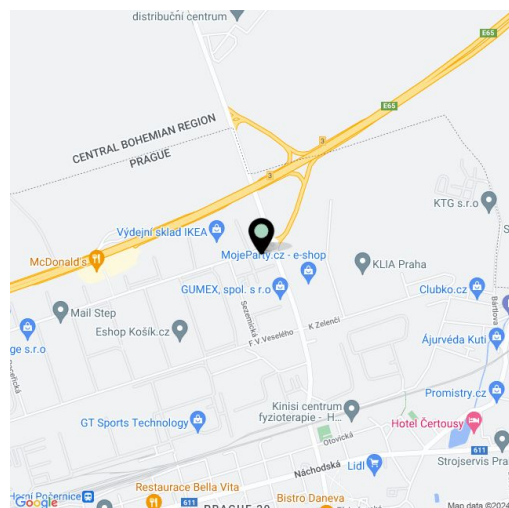
- 24/7 manned security in the area
- Park maintenance

Industrial space/ Warehouse:

- Flexible layout with small units from 500 sq.m. to large warehouse space up to 40 000 sq.m.
- Min.1 loading dock per 400-1000 sq.m
- Floor loading capacity 5-8 T/sq.m
- Clear height 10-12 m
- Truck yard 35-45 m
- Column grid structure 24x12 m
- Possible cross docking
- Infa-heating or heating blowers
- Sprinkler system

Office:

- Flexible office layout
- Air-conditioning



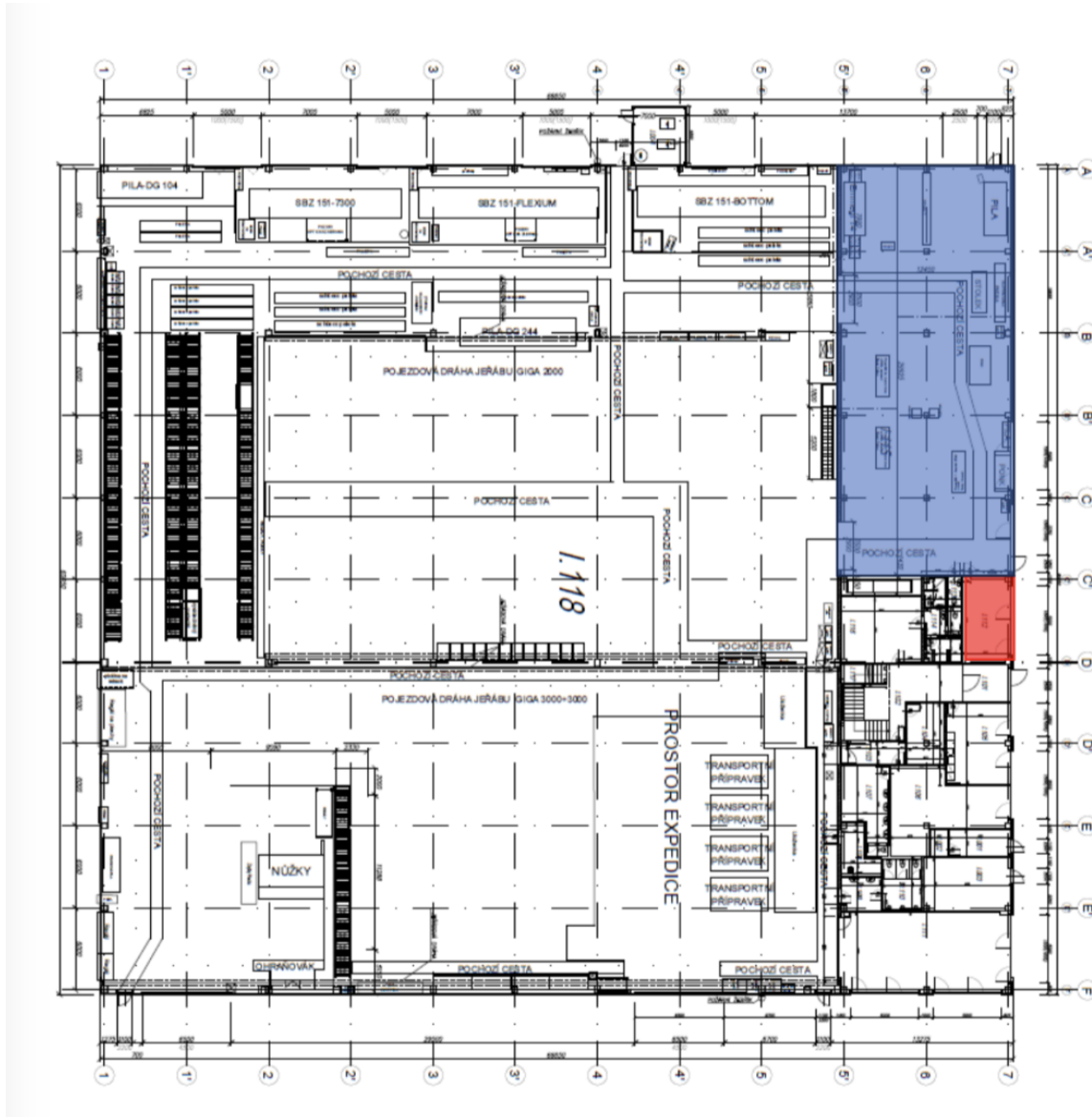
Rental and service charges listed without VAT. Lessee pays no commission.



Industrial space

410 m², Praha 9, Horní Počernice, Sezemická

Ask for price

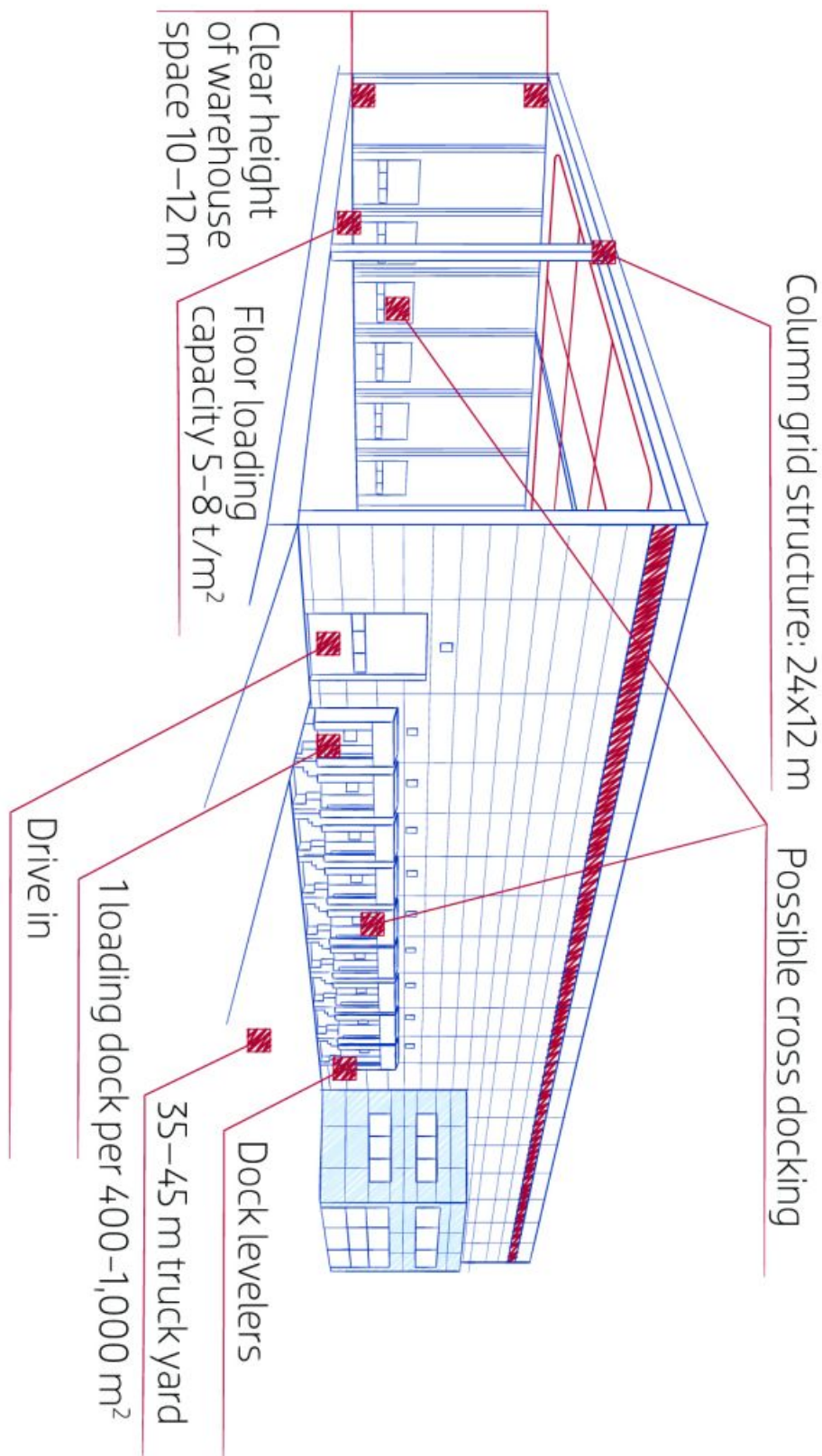




Industrial space

410 m², Praha 9, Horní Počernice, Sezemická

Ask for price





Industrial space

410 m², Praha 9, Horní Počernice, Sezemická

Ask for price

