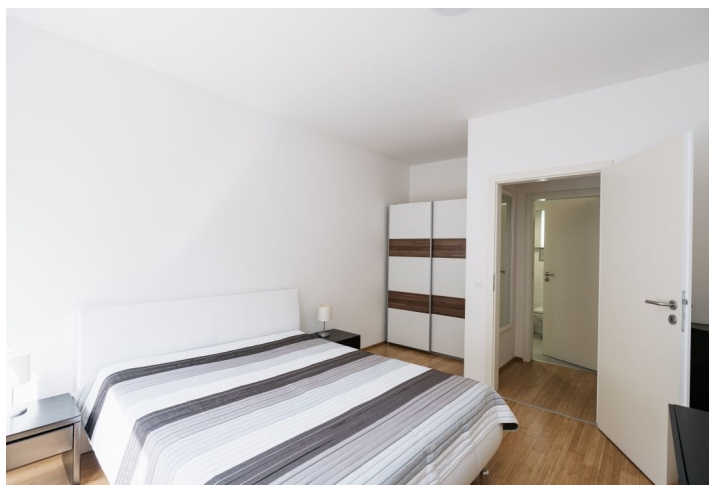




Apartment One-bedroom (2+kk)

Rented

56 m², Prague 5, Smíchov, Na Zatlance





Apartment One-bedroom (2+kk)

Rented

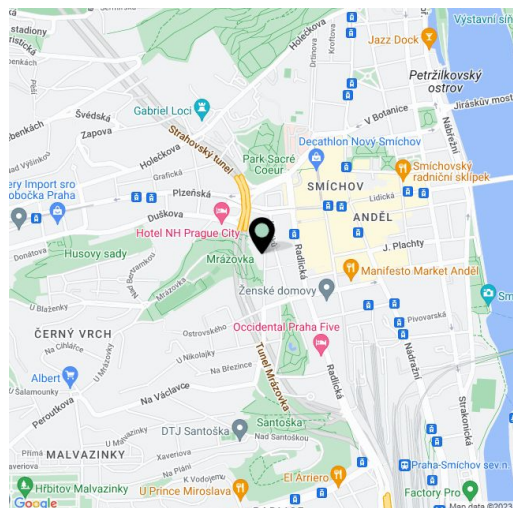
56 m², Prague 5, Smíchov, Na Zatlance

Total area	56 m ²
Parking	Garage parking.
Garage	Yes
Cellar	-
Service price	Monthly deposit for services and utilities CZK 4,500/month.
PENB	G
Reference number	34620
Available from	Immediately

This fully furnished apartment with green views, on the 2nd floor of a modern residential building with an elevator and underground parking, close to the Mrázovka and Na Skalce parks, is located in a central part of Prague 5, near the Smíchov business zone, in an area with great accessibility to the city center and full amenities within easy reach, within walking distance of the Nový Smíchov shopping and entertainment center, Anděl metro station and trams, and the Na Knížecí bus terminal.

The interior offers a living room with a fully fitted open plan kitchen, a bedroom with an en-suite bathroom (bathtub with a shower screen, toilet), and an entrance hall.

Hardwood parquet floors, tiles, large windows, security entry door, blinds, gas boiler, dishwasher, TV, video entry phone. A **garage parking** space is available at CZK 2,000/month.



* Area of the unit according to the Civil Code. The area consists of the sum total area of the entire unit bounded by perimeter walls.