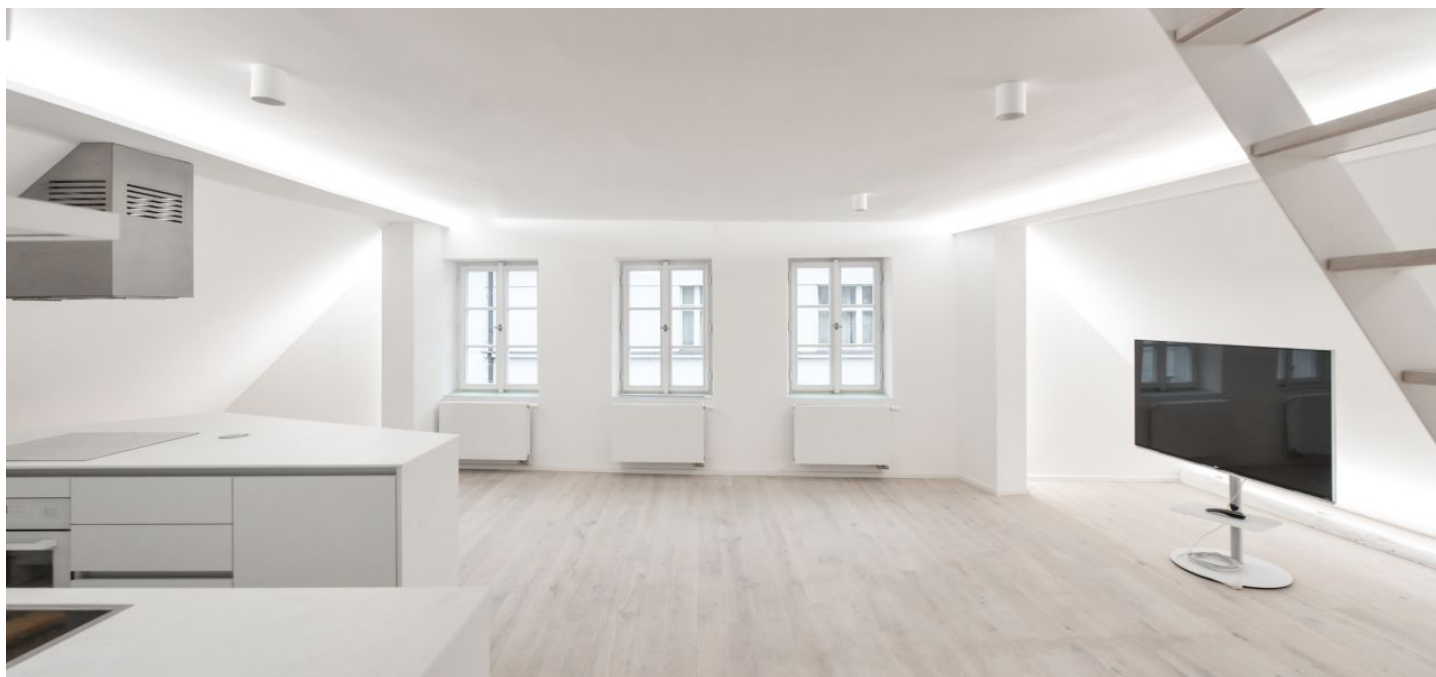




## Apartment Two-bedroom (3+kk)

Rented

125 m<sup>2</sup>, Prague 1, Staré Město, Michalská





## Apartment Two-bedroom (3+kk)

Rented

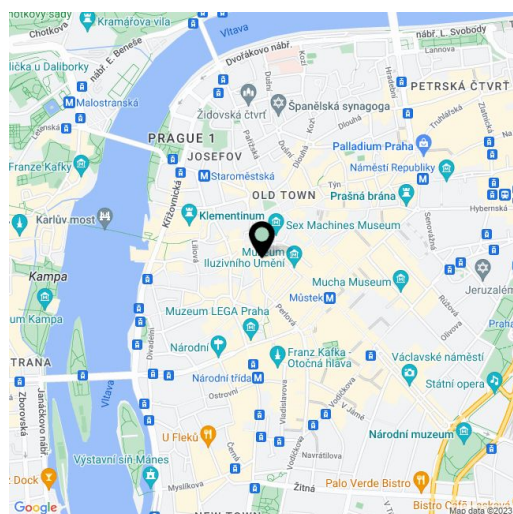
125 m<sup>2</sup>, Prague 1, Staré Město, Michalská

Total area	125 m <sup>2</sup>
Parking	-
Cellar	-
PENB	G
Reference number	34635
Available from	Immediately

Centrally located, this is a fully air-conditioned 2-bedroom split-level attic apartment that has undergone a complete renovation, on the top third floor of a charming historic building with preserved original details and no lift. Set in an exclusive location in the historic center of Prague with full amenities in the vicinity, a few minutes' walk from Wenceslas Square as well as Old Town Square, and the Můstek and Národní třída metro stations. Within instant reach of top quality restaurants, cafes, bars, open fresh produce markets, a supermarket, and numerous cultural venues.

The interior features a living room with a fully fitted open plan kitchen and a staircase leading up to an attic bedroom, and a separate second bedroom with a large attic space suitable for a playroom or storage. There is a shower room, a toilet with a bidet shower, and an entrance hall with built-in storage.

**Air-conditioning, hardwood floors,** large format tiles, security entry door, built-in storage, gas boiler, dishwasher, induction cooktop, multifunction steam oven, TV, video entry phone. Service charges and utilities are billed separately. Can be furnished for higher rent.



\* Area of the unit according to the Civil Code. The area consists of the sum total area of the entire unit bounded by perimeter walls.