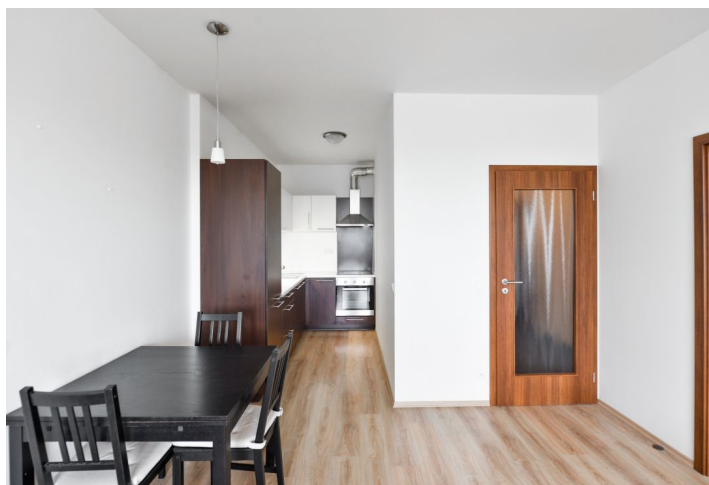
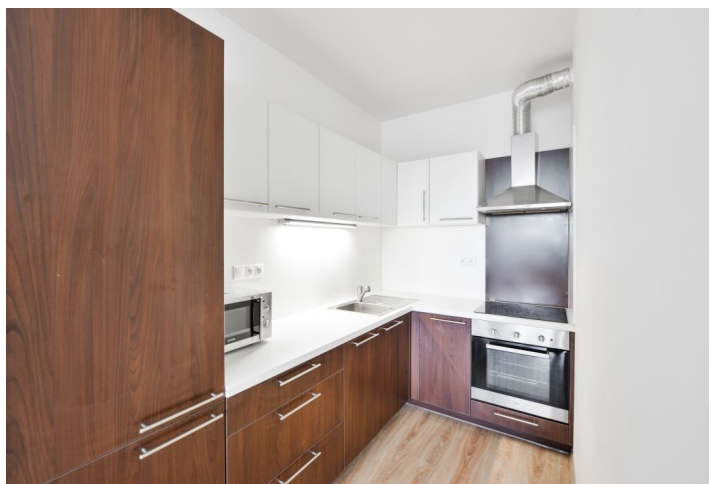




## Apartment One-bedroom (2+kk)

Sold

52.8 m<sup>2</sup>, Prague 5, Stodůlky, Nárožní





## Apartment One-bedroom (2+kk)

**Sold**52.8 m<sup>2</sup>, Prague 5, Stodůlky, Nárožní

Total area	56 m <sup>2</sup>
Floor area*	53 m <sup>2</sup>
Loggia	3 m <sup>2</sup>
Parking	Yes
Garage	Yes
Cellar	Yes
Service price	3 444 CZK monthly
PENB	G
Reference number	34698

This bright apartment with a loggia and a garage parking space is located on the 9th floor of a modern apartment building from 2013 with an elevator and underground garage close to the Hůrka metro station. The location offers complete civic amenities and easy access to the city center.

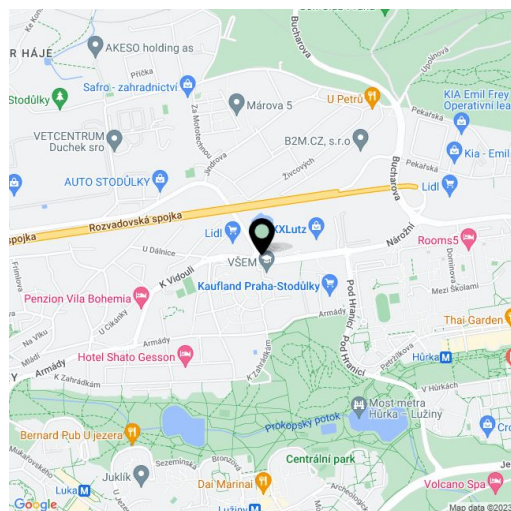
The layout consists of a living room with a kitchen, a separate bedroom, and a loggia, accessible from both rooms. From the practically designed hall with built-in wardrobes, there is access to a guest toilet with a sink and a spacious bathroom with a bathtub.

Facilities include vinyl floors, quadruple-glazed plastic windows with all-round fittings and interior blinds, Sapeli interior doors, and security entrance doors. The **custom-made kitchen** is fully equipped with appliances, and the bedroom has a spacious built-in wardrobe. Residents can use a common pram room (also for storing bicycles). The apartment comes with a **garage parking space** and a **safe brick cellar unit**.

Nearby, there is a supermarket, a post office, a restaurant, a pharmacy, an ATM, and an entrance to a line B metro station. A shopping center with a popular furniture store is within walking distance and another large shopping and entertainment center is a few minutes away by car or bus.

Interior 52.8 m<sup>2</sup>, balcony 3 m<sup>2</sup>, cellar 3 m<sup>2</sup>.

In addition to regular property viewings, we also offer **real time video viewings** via WhatsApp, FaceTime, Messenger, Skype, and other apps.



\* Area of the unit according to the Civil Code. The area consists of the sum total area of the entire unit bounded by perimeter walls.



# Apartment One-bedroom (2+kk)

Sold

52.8 m<sup>2</sup>, Prague 5, Stodůlky, Nárožní

