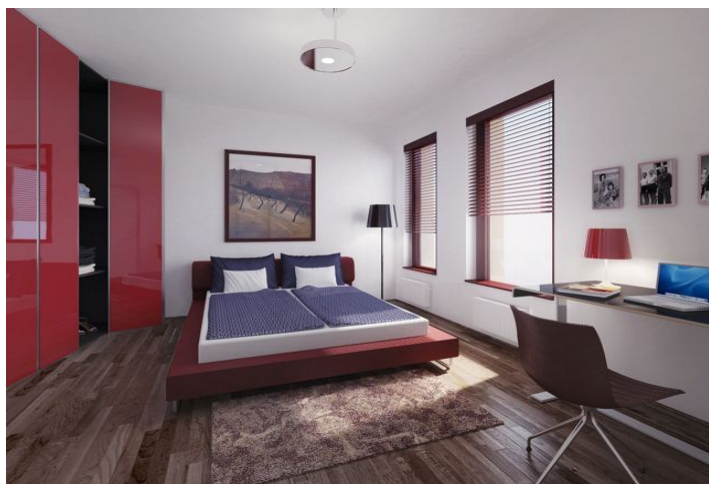
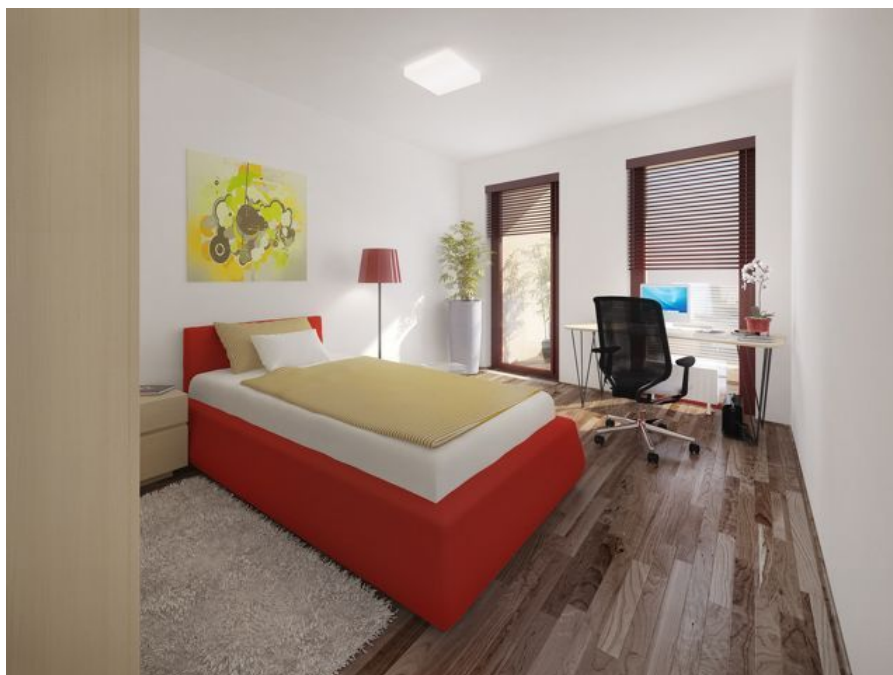




Apartment Three-bedroom (4+kk)

Sold

124 m², Prague 4, Michle, Baarova





Apartment Three-bedroom (4+kk)

Sold124 m², Prague 4, Michle, Baarova

Total area	124 m ²
Parking	Yes
Garage	Yes
Cellar	Yes
PENB	G
Reference number	347

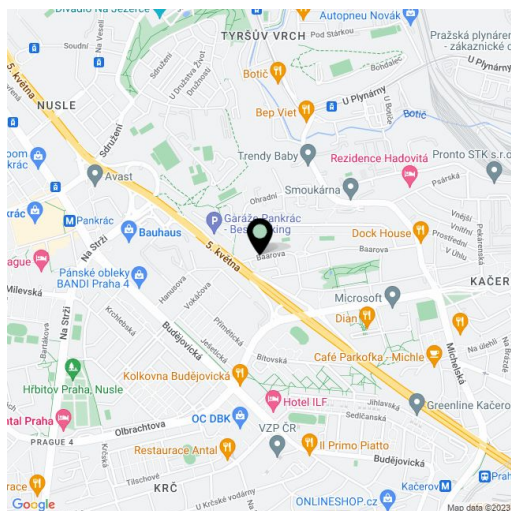
Spacious apartment with terrace on the 2nd floor of building B of a modern residential project. The project is urbanistically connected to the commercial BB Centrum through a newly created park.

The apartment offers living room with dining area, kitchenette (preparation) and terrace, 3 bedrooms, 2 of which share a terrace, study, bathroom, guest toilet, closet and utility room.

The apartment features security entrance door Lignis with stainless steel fittings. Wooden floors come either in Ash or Oak. Furnishing standards offer two variants – classic and modern. Bathroom fittings by Laufen and Grohe, tiling by La Faenza / Imola Ceramica.

The residence with 24hour reception offers modern lifestyle in an area with full range of amenities.

Interior 109.4 m², terraces 8.9 + 5.8 m², cellar 6.2 m²



* Area of the unit according to the Civil Code. The area consists of the sum total area of the entire unit bounded by perimeter walls.



Apartment Three-bedroom (4+kk)

124 m², Prague 4, Michle, Baarova

Sold

