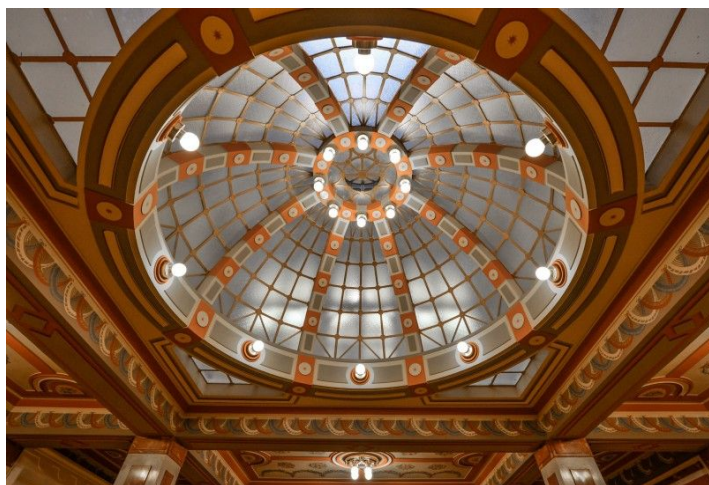
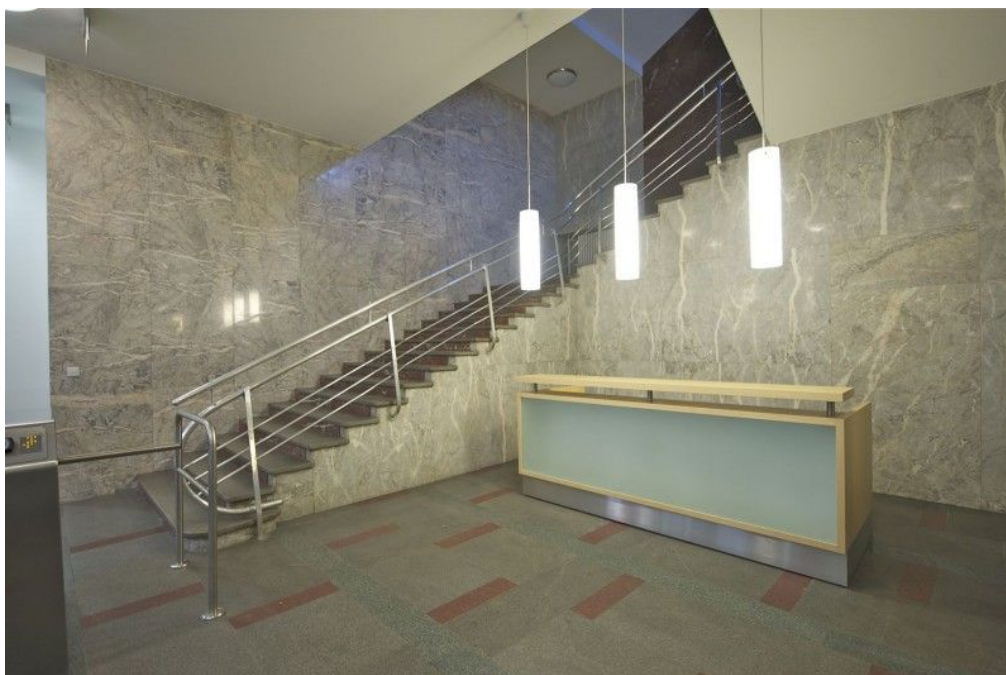




# Office building

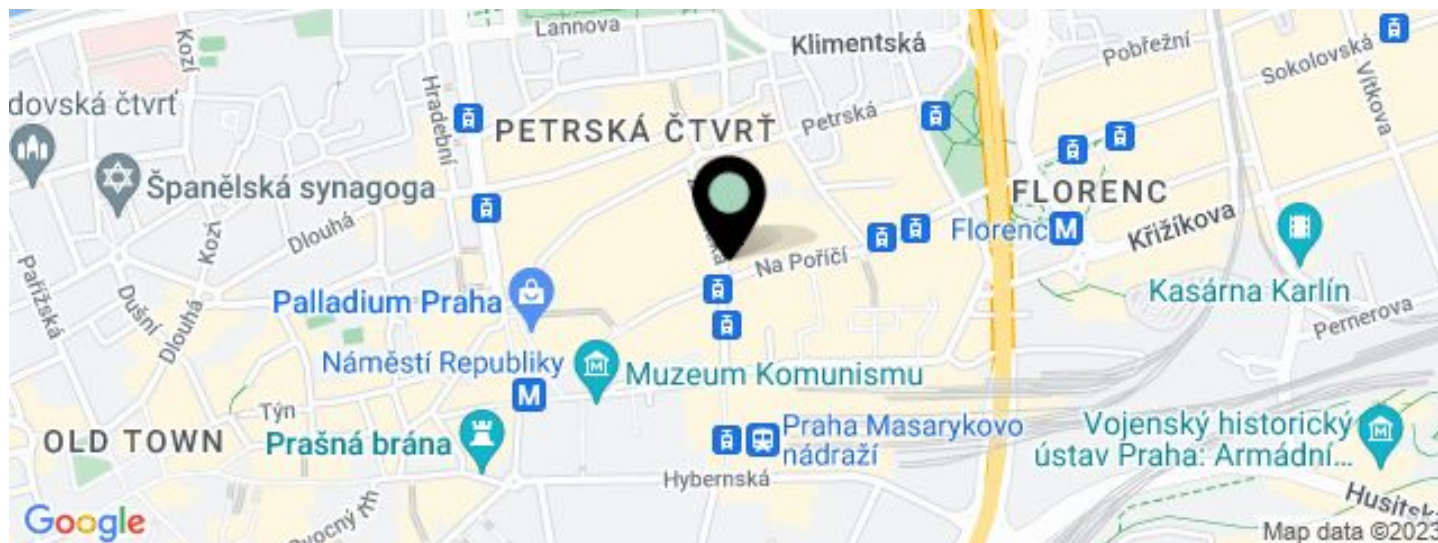
Prague 1, Nové Město, Na Poříčí

Ask for price



**Office building****Ask for price**

Prague 1, Nové Město, Na Poříčí



UNIT	AVAILABLE AREA	SERVICES	PARKING	MONTHLY RENT
shared offices	77 m <sup>2</sup>	0 CZK monthly per m <sup>2</sup>	Yes	Ask for price
shared offices	15 m <sup>2</sup>	0 CZK monthly per m <sup>2</sup>	Yes	Ask for price
shared offices	22 m <sup>2</sup>	0 CZK monthly per m <sup>2</sup>	Yes	Ask for price
shared offices	40 m <sup>2</sup>	0 CZK monthly per m <sup>2</sup>	Yes	Ask for price



**Office building**

Prague 1, Nové Město, Na Poříčí

**Ask for price**

Total building area	1 000 m <sup>2</sup>
Tenant consumption	—
Parking	4 500 CZK
Parking service charges	—
Parking ratio	—
Certification	—
PENB	C
Reference number	34795

**Serviced offices located in an architecturally significant complex of buildings at the lucrative Prague address of Na Poříčí Street offering fully equipped offices with flexible lease periods and above-standard business services.**

The serviced offices offer **fully equipped offices** with flexible lease term as well as the possibility of leasing a **daily office**. All services and equipment are tailored to the client's needs. A daily reception and lobby, meeting rooms, copy machines, and an equipped kitchen with snacks are available for clients.

The offices are located on the 5th floor of a listed building designed by the renowned Czech architect Josef Gočár in the style of Rondocubism. The complex of four buildings is functionally connected by a green atrium with a passage connecting Na Poříčí and Na Florenci streets.

**Location:**

The offices are in the city center between the Florenc (line B, C) and Namesti Republiky (line B) metro stations and near several tram stops. Direct connections to the Prague arterial road. Within walking distance of the Masaryk Railway Station and the Na Florenci central bus station.

**Shared offices facilities and services:**

Daily reception  
Mail and parcel handling  
Equipped private offices  
Conference room  
Daily office  
Fully equipped kitchenette incl. refreshment  
Copy machines  
High-speed Wi-Fi

**Equipment and building standards:**

Central reception  
Magnetic card access  
24-hour security service  
Openable windows  
Raised floors  
Air-conditioning  
Lowered ceilings with integrated lighting  
Underground parking

**The price list includes the following services:****Daily office:**

Daily office 8:30 - 17:00 ..... from CZK 495/day

**Office building**

Prague 1, Nové Město, Na Poříčí

**Ask for price**

Total building area	1 000 m <sup>2</sup>
Tenant consumption	—
Parking	4 500 CZK
Parking service charges	—
Parking ratio	—
Certification	—
PENB	C
Reference number	34795

**Private offices:**

Office for 1 - 3 people ..... from CZK 16,500/month

Office for 3 - 5 people ..... from CZK 22,900/month

Office for 4 - 8 people ..... from CZK 34,000/month

Rental and service charges listed without VAT. Lessee pays no commission.



# Office building

Prague 1, Nové Město, Na Poříčí

Ask for price

