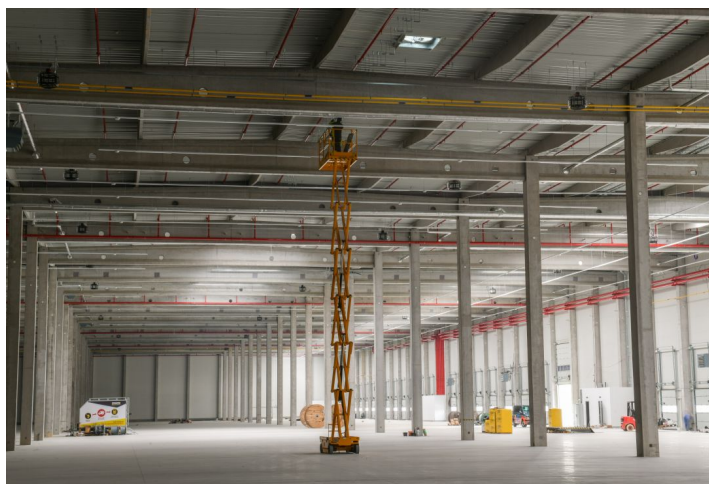




Industrial park

51 148 m², Cheb, Odrava

Ask for price

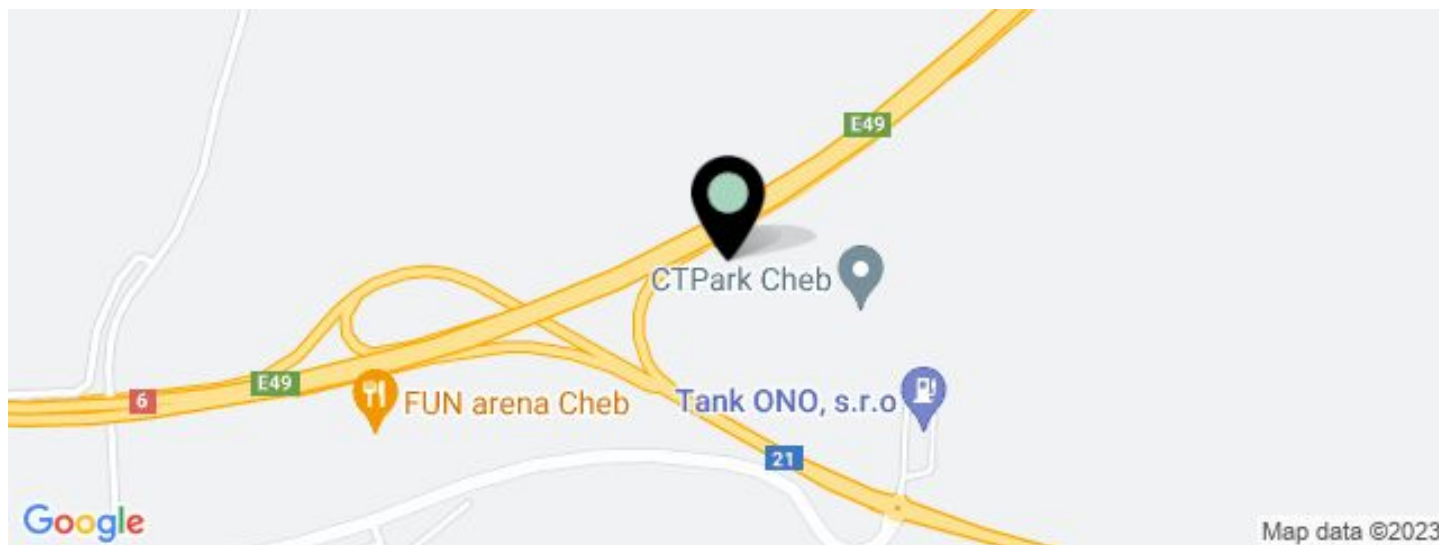




Industrial park

51 148 m², Cheb, Odrava

Ask for price



UNIT	AVAILABLE AREA	SERVICES	PARKING	MONTHLY RENT
Buildind CHE1C - planned	19 127 m ²	0 CZK monthly per m ²	No	Ask for price



Industrial park

51 148 m², Cheb, Odrava

Ask for price

Total area	51 148 m ²
Available area for rent	19 127 m ²
Ceiling height	10.5 m
Floor loading capacity	5 t/m ²
Column grid structure	—
Structure	Reinforced concrete structure
PENB	G
Reference number	34802

Industrial park offering industrial, warehouse and office space for lease approx. 12 km from Cheb. The premises are suitable for industrial centers and light manufacturing, offer a high standard of equipment, and can be designed based on specific requests and requirements. Thanks to its location the park is suitable for domestic and international distribution and production.

Location:

Situated on the outskirts of the industrial centre of Cheb, in North West Czech Republic, this strategically located park is ideal for clients looking to leverage the lower wages and embedded industrial knowledge available locally to serve customers just 10 minutes from the German border. Park provides nearly 50,000 sq.m. of premium CTFit and CTSpace facilities with direct highway access to Germany, Prague and Plzeň.

Features and Services:

- Flexible units (storage / office / light production / showroom)
- Onsite property management
- 24/7 security service and CCTV
- Park maintenance
- Sufficient parking space
- High standard of building

Industrial/Warehouse space:

- Dock levelers & loading ramps
- Dimension of entrance gate 4x4,5 m
- Floor loading capacity 5 T/sq.m
- Clear height 10,5 m
- Column grid structure 12x24 m
- LED Light
- Sprinkler system
- Utility connections (water, sewage, gas, electricity)

Office:

- Turn key office
- Clear height 2,75 m
- Air-conditioning
- External blinds

Lessee pays no commission.



Industrial park

51 148 m², Cheb, Odrava

Ask for price

