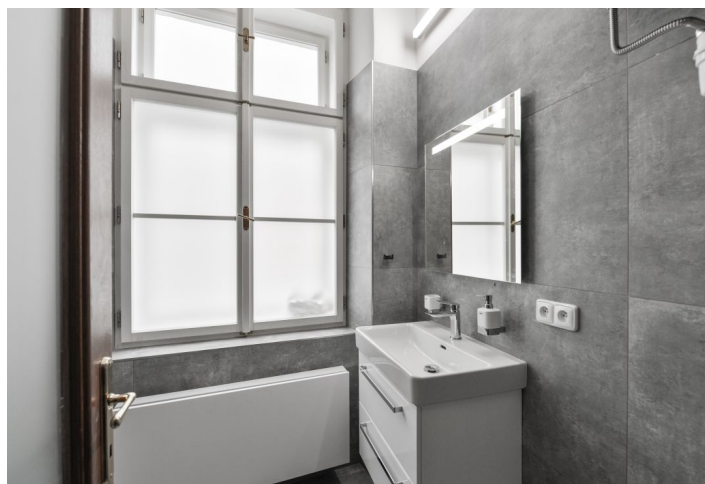
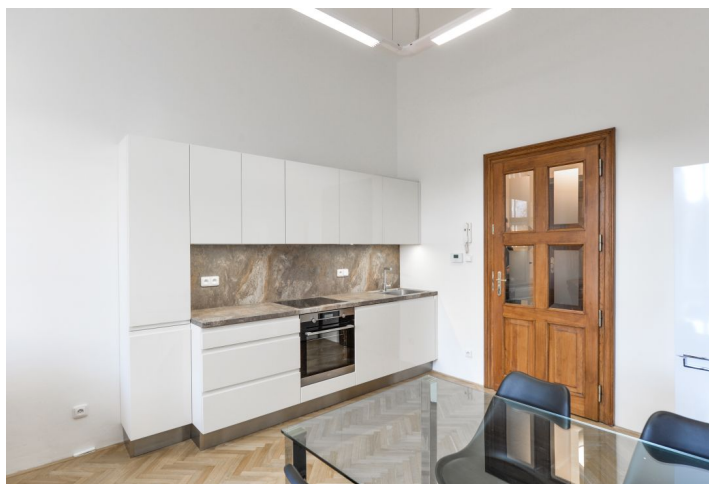
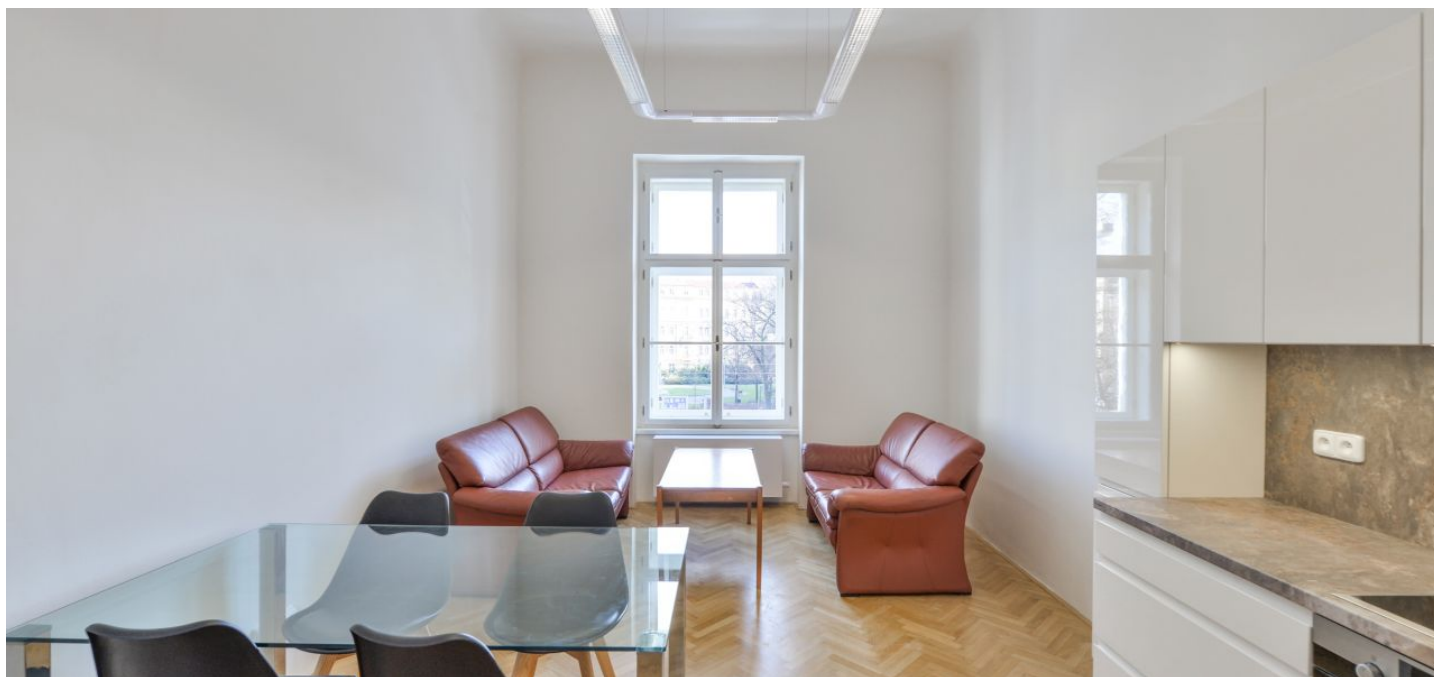




## Apartment Two-bedroom (3+kk)

Rented

78 m<sup>2</sup>, Prague 5, Smíchov, Štefánikova





## Apartment Two-bedroom (3+kk)

Rented

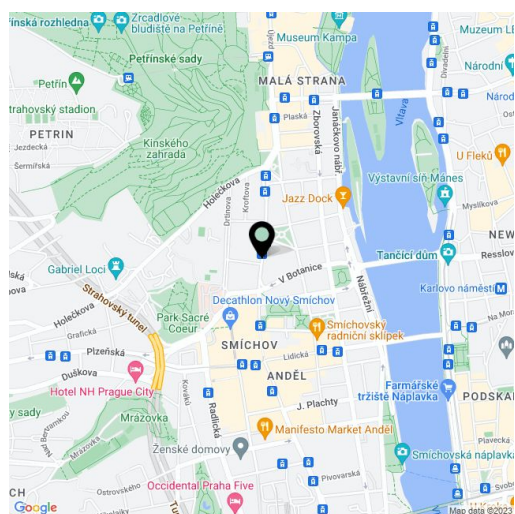
78 m<sup>2</sup>, Prague 5, Smíchov, Štefánikova

|                  |                   |
|------------------|-------------------|
| Total area       | 78 m <sup>2</sup> |
| Parking          | -                 |
| Cellar           | -                 |
| PENB             | G                 |
| Reference number | 34851             |
| Available from   | Immediately       |

Renovated, partly furnished 2-bedroom flat on the second floor of a building situated near the Petřín Hill Park, within walking distance from the Vltava embankment. Convenient to the Anděl metro station and Nový Smíchov commercial center (one short tram stop), with full amenities in the area and quick connections to the city center.

The interior includes a living room with a dining area and a fully fitted open plan kitchen, two separate bedrooms, a bathroom with a shower, a separate toilet, and an entrance hall.

Large windows, high ceilings, **solid wood parquet floors**, tiles, built-in wardrobes, gas boiler, washer, dishwasher. Service charges CZK 1000/mo. Deposit for water bills: CZK 500/person/month. Gas and electricity will be transferred to the tenant.



\* Area of the unit according to the Civil Code. The area consists of the sum total area of the entire unit bounded by perimeter walls.