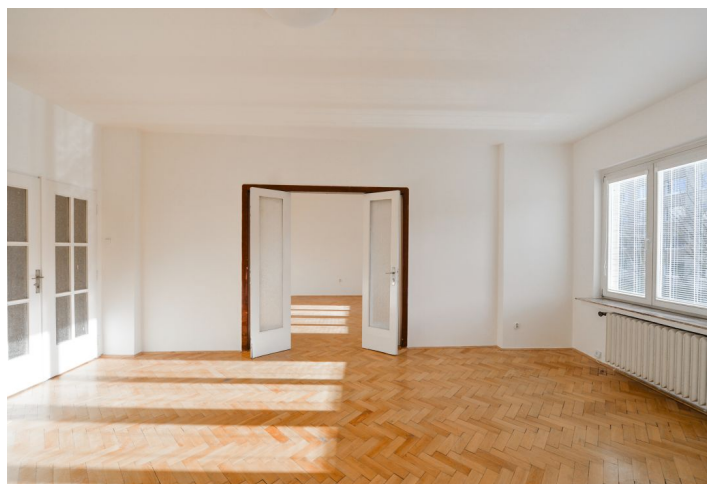




Apartment One-bedroom (2+1)

Rented

82 m², Prague 4, Nusle, Nuselská





Apartment One-bedroom (2+1)

Rented

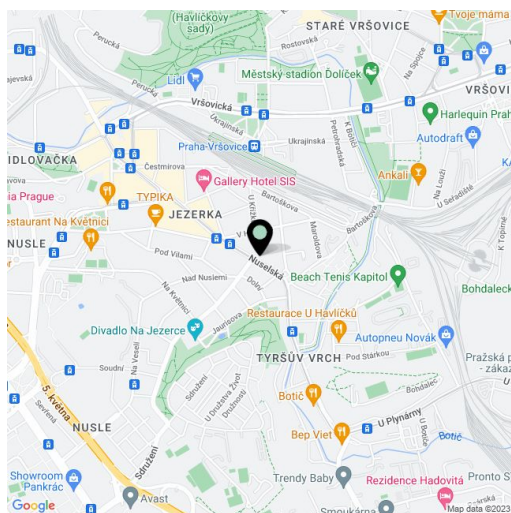
82 m², Prague 4, Nusle, Nuselská

Total area	92 m ²
Floor area*	82 m ²
Terrace	10 m ²
Parking	Possible to rent parking space nearby at CZK 2,000 monthly.
Cellar	-
PENB	G
Reference number	34853
Available from	Immediately

Spacious 1-bedroom apartment with balcony on the second floor of a building in Prague 4, Nusle, in close vicinity of the Jezerka park, with bus and tram connections to metro and the city center, close to major business parks and offices, shopping centers and amenities, international schools, great sport facilities and parks.

The apartment features living room, bedroom, fully fitted kitchen with access to balcony, pantry, utility room, bathroom with bathtub, separate toilet, and entrance hall.

Wooden floors, tiles, dishwasher, built-in wardrobes. Possible to rent parking space nearby at CZK 2,000 monthly. Common building charges are included in the rent, deposit for central heating and consumption of water CZK 3,000/month, electricity is transferred to the tenant.



* Area of the unit according to the Civil Code. The area consists of the sum total area of the entire unit bounded by perimeter walls.