



Office building

Prague 1, Nové Město, Palackého

Rented





Office building

Prague 1, Nové Město, Palackého

Rented

Service price	100 CZK monthly per m ²
Total building area	137 m ²
Tenant consumption	—
Parking	-
Parking service charges	—
Parking ratio	—
Certification	—
PENB	G
Reference number	34927

Historical building with the modern office premises located within Prague city centre. Building is located just a few steps from Wenceslas Square and the Franciscan Garden.

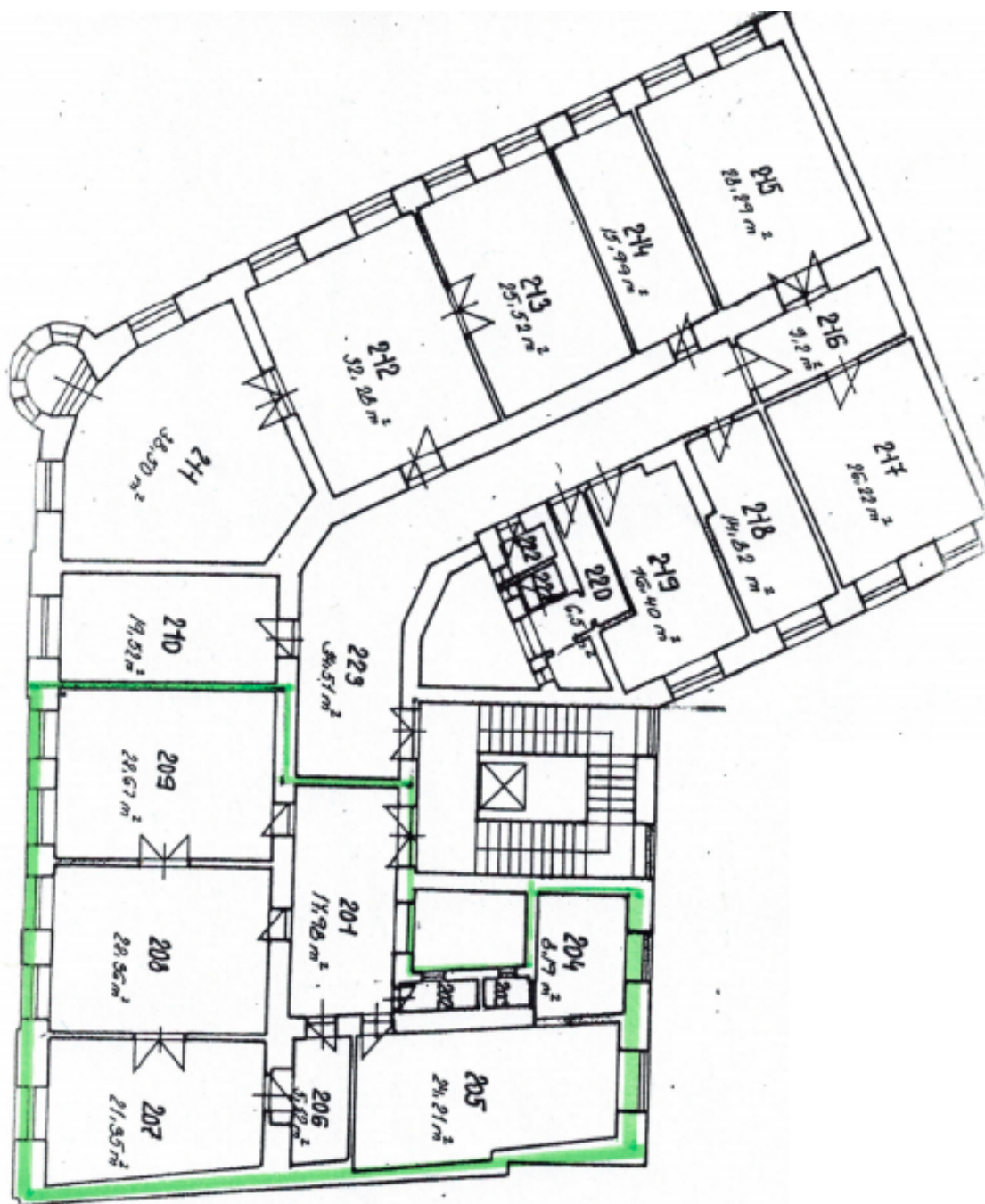
Location:

Outstanding accessibility by public transportation, metro station Můstek (lines A, B), Muzeum (line C) and tram stops Národní třída, Lazarská, Vodičkova and Václavské náměstí.

Features and services:

Lighting
Telephone and internet connection
24/7 reception
Restrooms
Kitchenette

Rental and service charges listed without VAT. Lessee pays no commission.



2. PATRO