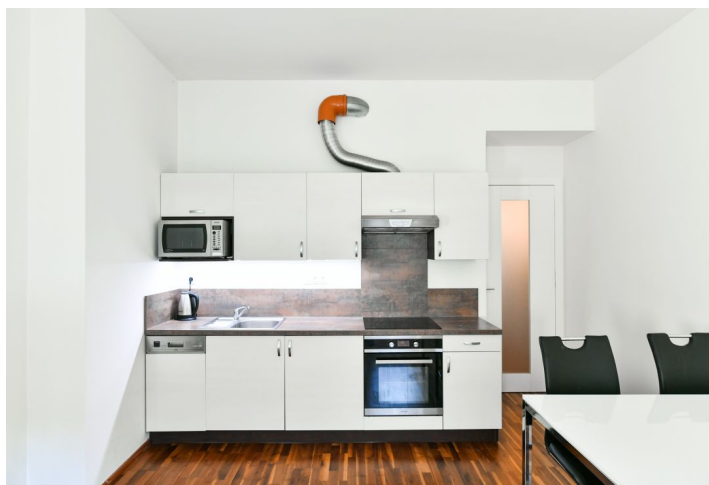
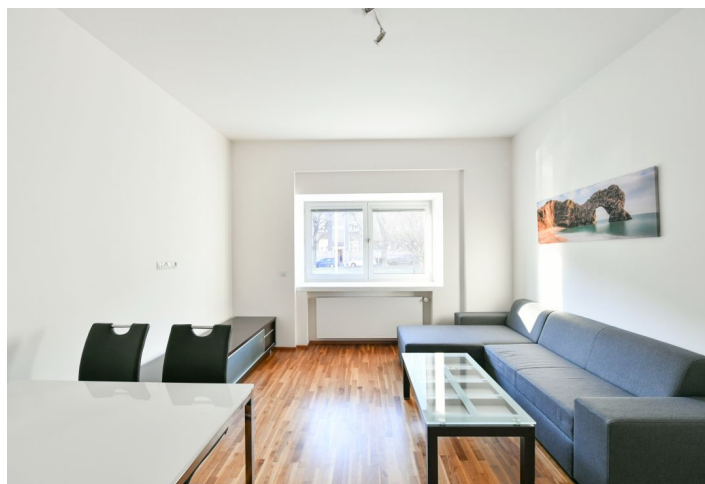
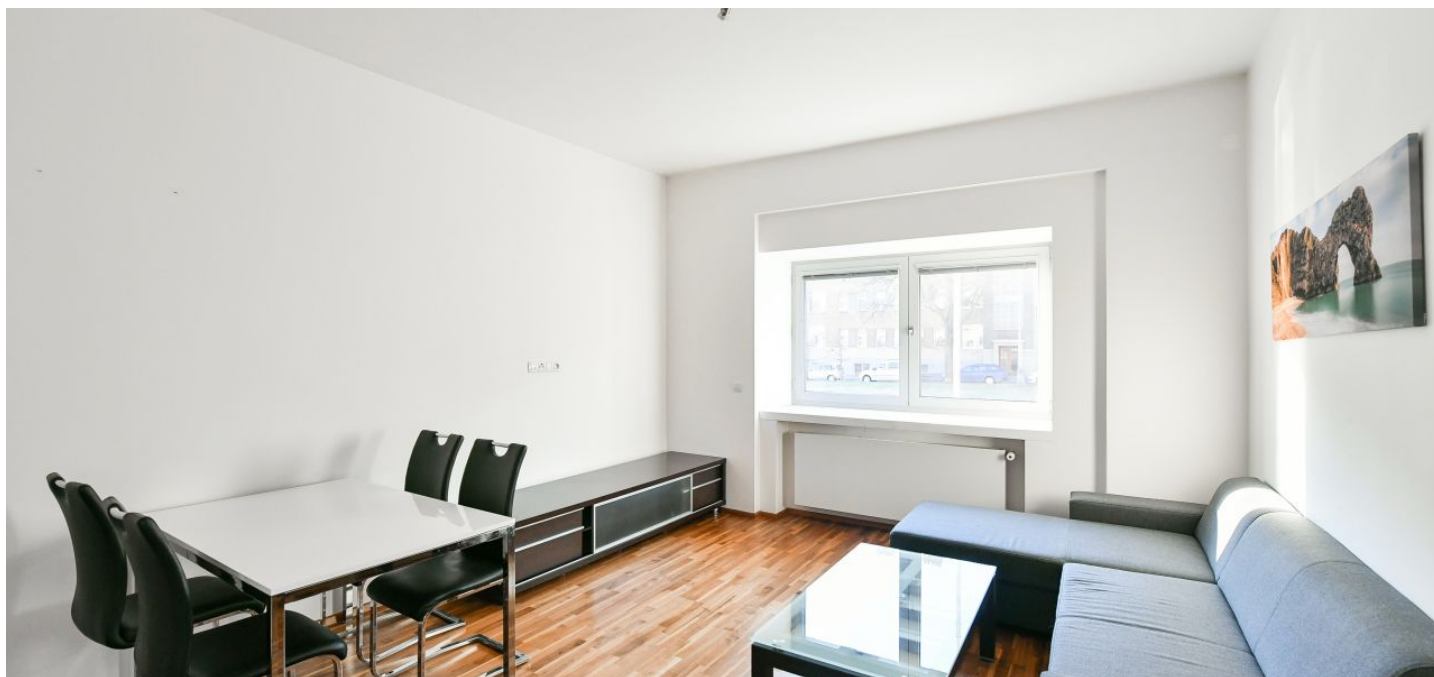




## Apartment One-bedroom (2+kk)

Rented

62 m<sup>2</sup>, Prague 6, Dejvice, Nikoly Tesly





## Apartment One-bedroom (2+kk)

Rented

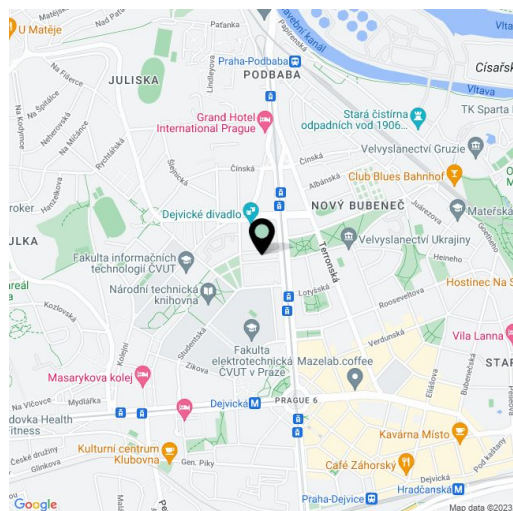
62 m<sup>2</sup>, Prague 6, Dejvice, Nikoly Tesly

Total area	62 m <sup>2</sup>
Parking	-
Cellar	Yes
PENB	C
Reference number	34961
Available from	Immediately

This fully refurbished, furnished 1-bedroom flat is situated on the upper ground floor of a residential building from 1930s, designed by a Czech architect Vladimír Weiss. The building that underwent a complete renovation boasts a shared green courtyard with mature trees. Located in a quiet part of Dejvice, Prague 6, with lots of greenery, moments from the Czech Technical University Campus, and near the venue of the popular regular farmers' market. Great location just a few minute walk from Dejvická metro station with quick access to the city center and full amenities in the area, and convenient to the airport and numerous international schools.

The interior features a living room with a fully fitted open plan kitchen and a dining area, a bedroom, a shower room with a toilet, and an entrance hall with large built-in wardrobes. Both main rooms are facing a wide belt of greenery.

Laminated floors, tiles, security entry door, blinds, gas boiler, washing machine, dishwasher, microwave oven, **cellar**. Deposit for common building charges CZK 2,500/month. Electricity and gas are billed separately.



\* Area of the unit according to the Civil Code. The area consists of the sum total area of the entire unit bounded by perimeter walls.