



Apartment One-bedroom (2+kk)

Rented

80 m², Prague 3, Žižkov, Bořivojova





Apartment One-bedroom (2+kk)

Rented

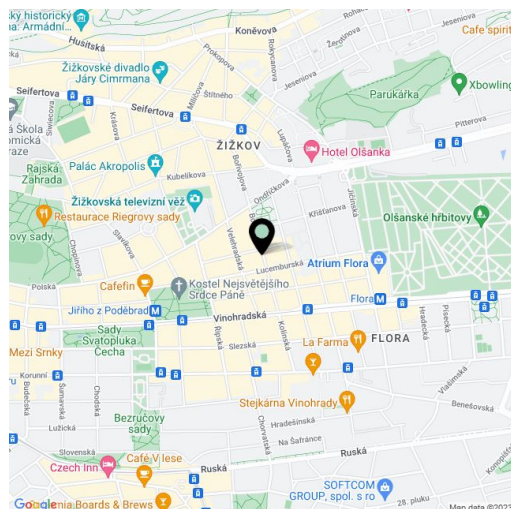
80 m², Prague 3, Žižkov, Bořivojova

Total area	95 m ²
Floor area*	80 m ²
Terrace	15 m ²
Parking	Garage available.
Garage	Yes
Cellar	Yes
PENB	G
Reference number	34964
Available from	Immediately

Benefiting from a 15 m² terrace, this is partly furnished 1-bedroom 2-bathroom split-level attic apartment on the 6th floor of a renovated residential building with a lift. Set on the edge of the Vinohrady neighborhood, just moments from the Riegrovy Sady Park. Location with full amenities within easy reach and within walking distance of the city center, a few min. to Hlavní nádraží metro station. Rajska zahrada (the "Garden of Eden"), a multipurpose park with a beautiful garden and a children's playground, is situated just steps from the building.

The lower level includes a living room with a fully fitted open plan kitchen, a custom made **walk-in closet**, a bathroom (corner bathtub, toilet), and an entrance hall with built-in storage. The upper floor features a bedroom with storage, a bathroom (walk-in shower, toilet), and a **terrace** facing south towards the green courtyard.

Vinyl and laminated floors, tiles, gas boiler, washing machine, dishwasher, microwave oven, TV, UPC cable connection, **cellar**. An on-site single **garage** is available at CZK 1.500/month. Monthly deposit for service charges, utilities and the Internet in the amount of CZK 3,288 is billed separately.



* Area of the unit according to the Civil Code. The area consists of the sum total area of the entire unit bounded by perimeter walls.



Apartment One-bedroom (2+kk)

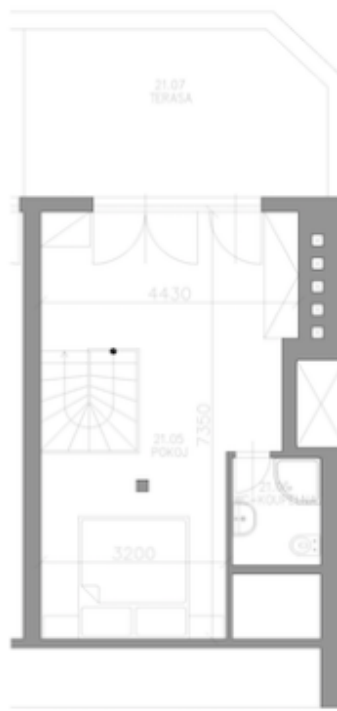
Rented

80 m², Prague 3, Žižkov, Bořivojova

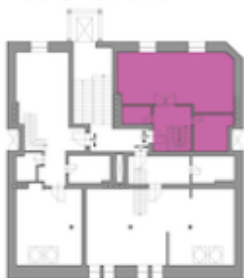
M 1:100
6.NP



7.NP



PŮDORYS 6.NP



PŮDORYS 7.NP



POHLED ULIČNÍ



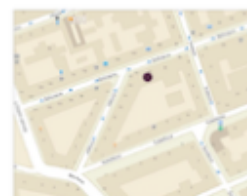
POHLED DVORNÍ



PŮDORYS I.PP
(SKLEPY)



MAPA



GPS: 50.0824108N, 14.4467139E

Kategorie bytu
Plocha bytu (č.1192/21)
Plocha sklepu (č.21)
Plocha terasy
Celkem

2+kk
80,37 m²
6,48 m²
15,04 m²
101,89 m²