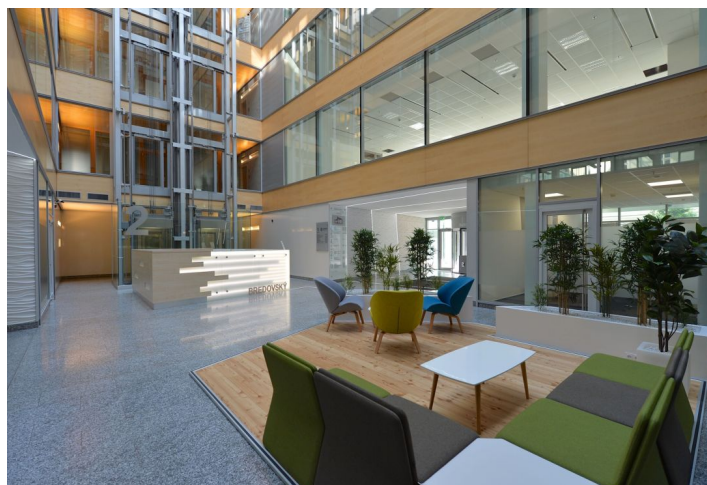
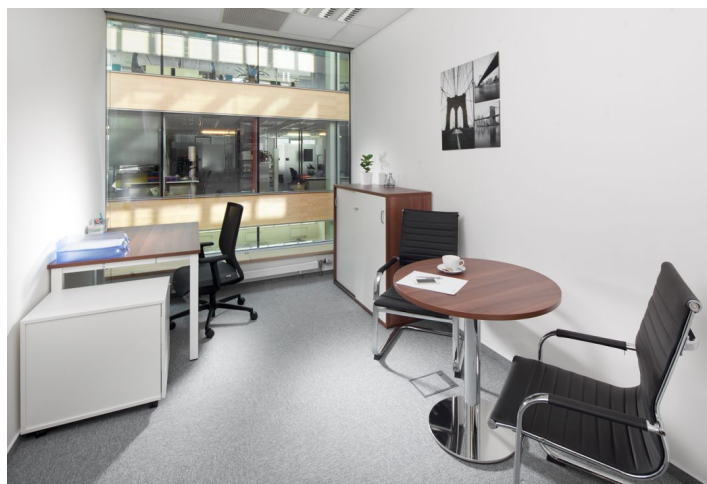




## Office space

Prague 1, Nové Město, Olivova

Ask for price





## Office space

Prague 1, Nové Město, Olivova

[Ask for price](#)

Available area	20 m <sup>2</sup>
Cellar	-
Parking	Yes
PENB	C
Reference number	34989

**Serviced offices at a fantastic address on the corner of Olivova and Politických veznu streets offer fully equipped offices with flexible lease terms and above-standard business services.**

The serviced offices offer **fully equipped offices** with flexible lease terms as well as the possibility of leasing a **daily office**. All services and equipment are tailored to the client's needs. A daily reception and lobby, meeting rooms, copy machines, and an equipped kitchen with snacks are available for clients.

The serviced offices are spread out over two floors of a modern building, which is part of an office complex of two historic renovated buildings and one new modern building. On the ground floor of the complex there is a restaurant and a quiet outdoor atrium.

### Location:

In the city center only a few minutes' walk from Wenceslas Square. Excellent access by public transport, within walking distance of 3 minutes to all metro lines. Easy connection to Prague arterial road and the D1 highway.

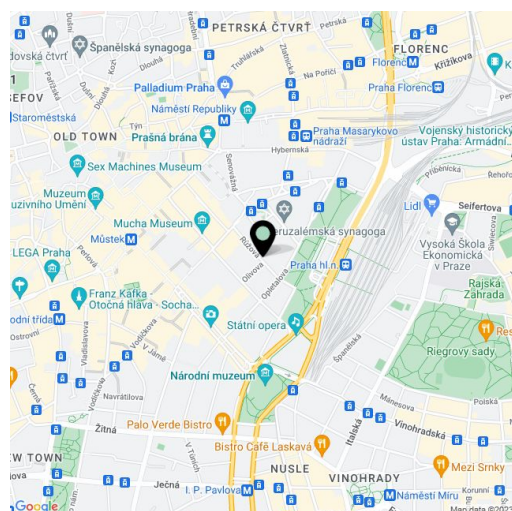
### Shared offices facilities and services:

- Daily reception
- Mail and parcel handling
- Equipped private offices
- Conference room
- Daily office
- Fully equipped kitchenette incl. refreshment
- Copy machines
- High-speed Wi-Fi

### Equipment and building standards:

- Central reception and lobby
- 24-hour security service
- Magnetic card access
- Raised floors
- Central air-conditioning
- Lowered ceilings with integrated lighting
- Sprinklers
- 6 passenger elevators
- Openable windows
- Parking in the underground garage
- Bike storage
- Restaurant on the ground floor

**The price list includes the following services:**



**Office space**

Prague 1, Nové Město, Olivova

**Ask for price**

<b>Available area</b>	20 m <sup>2</sup>
<b>Cellar</b>	-
<b>Parking</b>	Yes
<b>PENB</b>	C
<b>Reference number</b>	34989

**Daily office:**

Daily office 8:30-17:00 ..... from CZK 495/day

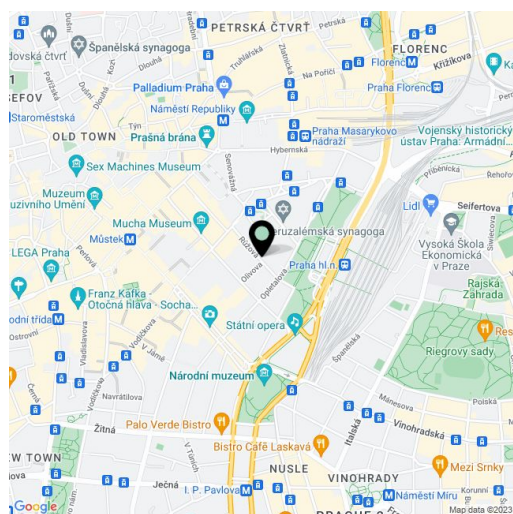
**Private offices:**

Office for 1 person ..... from CZK 14,900/month

Office for 2 people ..... from CZK xxx/month

Office for 4 people ..... from CZK xxx/month

Rental and service charges listed without VAT. Lessee pays no commission.





# Office space

Prague 1, Nové Město, Olivova

Ask for price

