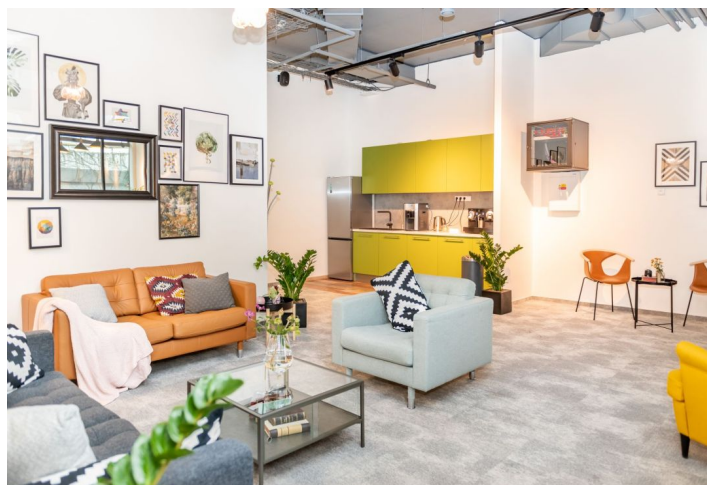




## Office building

2 880 m<sup>2</sup>, Prague 5, Stodůlky, Bucharova

Rented





## Office building

2 880 m<sup>2</sup>, Prague 5, Stodůlky, Bucharova

Rented

Total building area	2 880 m <sup>2</sup>
Tenant consumption	—
Parking	Yes
Parking service charges	—
Parking ratio	—
Certification	—
PENB	G
Reference number	35053

**Flexible offices with stunning views in the business and administrative area of Prague 5 - Nové Butovice offer the possibility of renting a separate work desk as well as tailor-made corporate space.**

The serviced offices provide **fully-equipped private offices** that are move-in ready, **corporate premises** with custom branding tailored to the tenant's needs, as well as coworking facilities in the form of **hot desks**. Tenants can use the fully equipped conference center on the ground floor of the building, a lounge and common areas, equipped kitchenette with snacks, and other services.

The offices are spread out over four floors of a building that is part of a complex of four modern office buildings. The complex is located in the middle of maintained green areas with park relaxation zones and so the offices have beautiful views of the greenery.

### Location:

The building is easily accessible by car and public transport. It is located right next to the **Nové Butovice metro station (line B)**. Very good access to the Prague Ring Road and D5 highway, and the Vaclav Havel International Airport is 15 minutes away. There is a shopping gallery in the vicinity and all public amenities with shops, restaurants, and cafes.

### Shared offices facilities and services:

- Daily reception
- Equipped private offices
- Daily office
- Fully equipped conference center on the ground floor
- Equipped kitchen
- Copy center
- High-speed Wi-Fi

### Equipment and building standards:

- Central reception
- 24-hour security service
- High-speed elevators
- Smart card access
- Raised floors
- Sprinklers
- Openable windows
- Parking in the underground garage
- Bicycle parking including showers
- Car wash and electric car charging station
- Greenery with relaxation zones within the complex
- Shopping gallery, bistro, restaurants, and cafes within the complex
- Rohlik Point cooled food dispenser

**Office building**2 880 m<sup>2</sup>, Prague 5, Stodůlky, Bucharova**Rented**

Total building area	2 880 m <sup>2</sup>
Tenant consumption	—
Parking	Yes
Parking service charges	—
Parking ratio	—
Certification	—
PENB	G
Reference number	35053

Laundry services

**Price list including services:****Coworking:**

Hot desk ..... from CZK 575/day

**Private offices:**

Office for 2 people ..... from CZK 8,000/month

Office for 4 people ..... from CZK 16,000/month

Office for 8 people ..... from CZK 24,000/month

**Corporate premises** with own branding from EUR 15,5/m<sup>2</sup>.**Meeting rooms** and event space rental from CZK 575/hour.

Lease and service charges listed without VAT. Lessee pays no commission.





## Office building

2 880 m<sup>2</sup>, Prague 5, Stodůlky, Bucharova

Rented

