



Apartment Two-bedroom (3+kk)

Rented

73 m², Prague 2, Vinohrady, Na Švihance





Apartment Two-bedroom (3+kk)

Rented

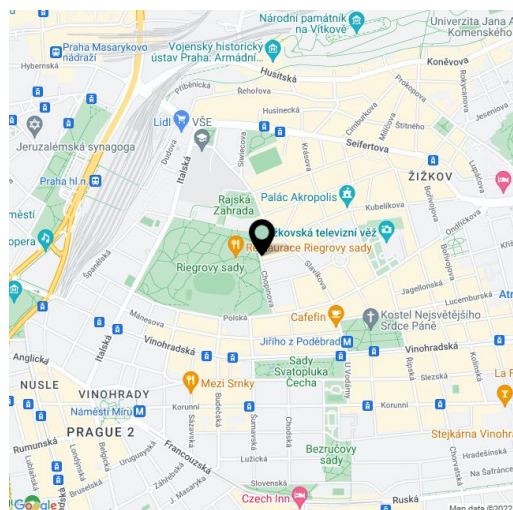
73 m², Prague 2, Vinohrady, Na Švihance

Total area	79 m ²
Floor area	73 m ²
Balcony	6 m ²
Parking	-
Cellar	-
PENB	G
Reference number	35062
Available from	01.11.2023

Benefiting from a wonderful location mere steps from Riegrovy sady park, this refurbished and furnished, fully air-conditioned 2-bedroom attic apartment with a west-facing terrace and views of Prague Castle is on the fifth top floor of a recently completely renovated Art Nouveau building with an elevator. Located in a highly sought-after residential area with very quick access to the city center, just a short walk from Jiřího z Poděbrad Square with a metro station, great amenities, and a popular regular produce market.

The interior features a living room with a fully fitted open plan kitchen and a **terrace** facing the green courtyard, a master bedroom with a fitted **walk-in closet**, a second bedroom with built-in wardrobes and storage, a bathroom including a bathtub, a separate toilet, and an entrance hall with built-in wardrobes.

Vinyl floors, large-format tiles, security entry door, **wooden windows**, central heating, washing machine, dishwasher, induction cooktop, coffee maker, TV, video entry phone. Monthly deposit for service charges, water, and heating: CZK 6,000 per person. Electricity will be transferred to the tenant. Available from November 2022.

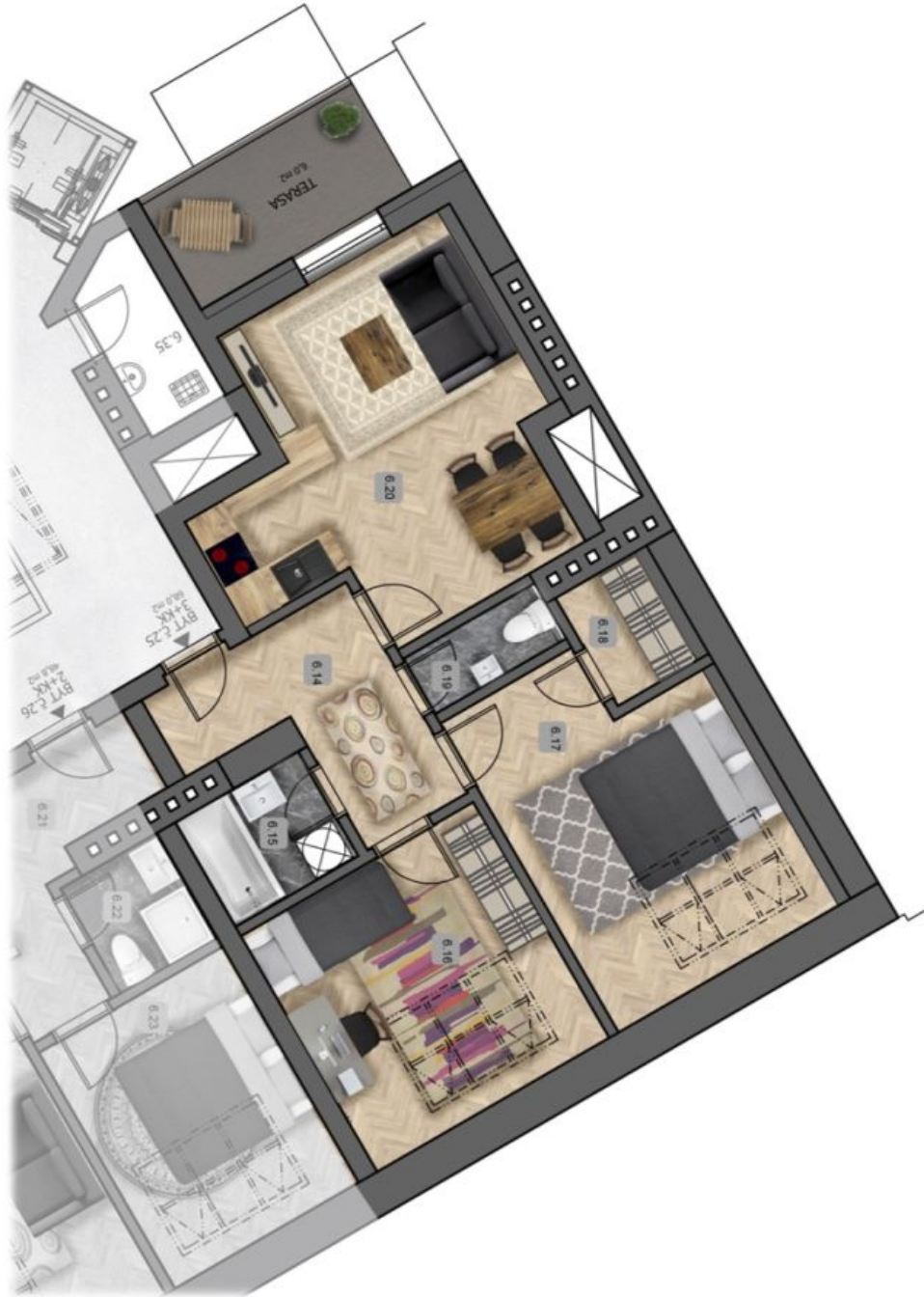




Apartment Two-bedroom (3+kk)

73 m², Prague 2, Vinohrady, Na Švihance

Rented



**Apartment Two-bedroom (3+kk)**73 m², Prague 2, Vinohrady, Na Švihance**Rented****Byt č.25****6.podlaží 72,7 m²**

6.14	Chodba	7,8
6.15	Koupelna	3,4
6.16	Pokoj	14,5
6.17	Ložnice	17,0
6.18	Šatna	2,6
6.19	WC	1,9
6.20	Obývací pokoj+kk	20,8
terasa(balkon)		6,0



umístění bytu na patře



Apartment Two-bedroom (3+kk)

73 m², Prague 2, Vinohrady, Na Švihance

Rented



umístění bytu v objektu