

**Office space**

Prague 6, Veveslavín, Na Okraji

**Rented**

<b>Service price</b>	80 CZK monthly per m <sup>2</sup>
<b>Available area</b>	377 m <sup>2</sup>
<b>Cellar</b>	-
<b>Parking</b>	EUR 75 - 95 / ps / month
<b>PENB</b>	G
<b>Reference number</b>	35125

Office space for rent on the 3rd floor of an administrative and residential complex designed by architect Vlado Milunic, situated in a calm area of Prague 6.

**Location:**

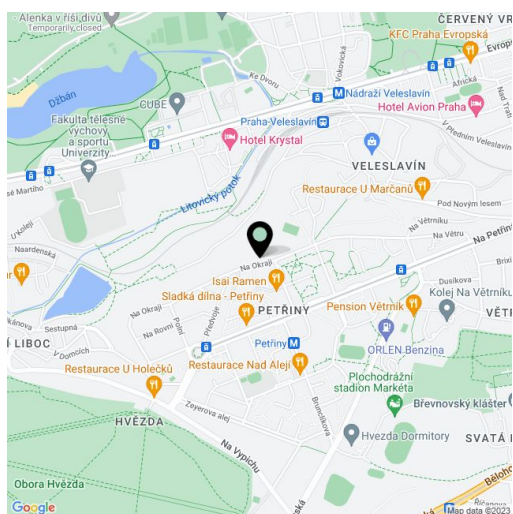
The location offers excellent transport accessibility – the building is located near the Petřiny metro station (line A), and close to bus and tram stops.

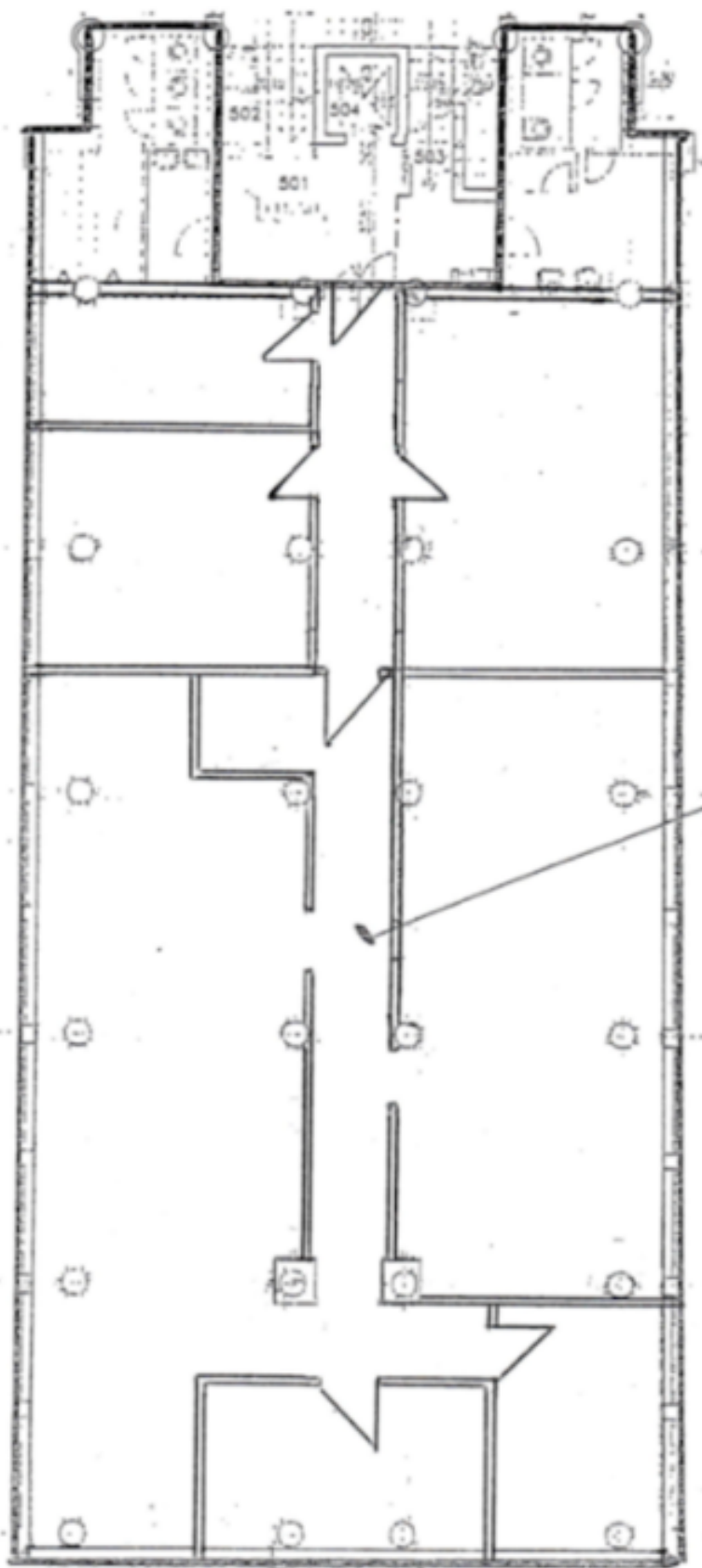
Quick connection to Prague's center and the Vaclav Havel International Airport. Pleasant surroundings with lots of greenery, excellent amenities, incl. opportunities for sports & leisure – Obora Hvězda, Park Ladronka, Divoká Šárka.

**Features and Services:**

- Central reception
- 24-hour security service
- Magnetic card access
- Air-conditioning
- Openable windows
- Internal blinds
- Structured data-network
- Fitness, solarium, salt cave in the building

Rental and service charges are listed without VAT. Lessee pays no commission.





3. patro / 3rd floor

D11  
011