



Office building

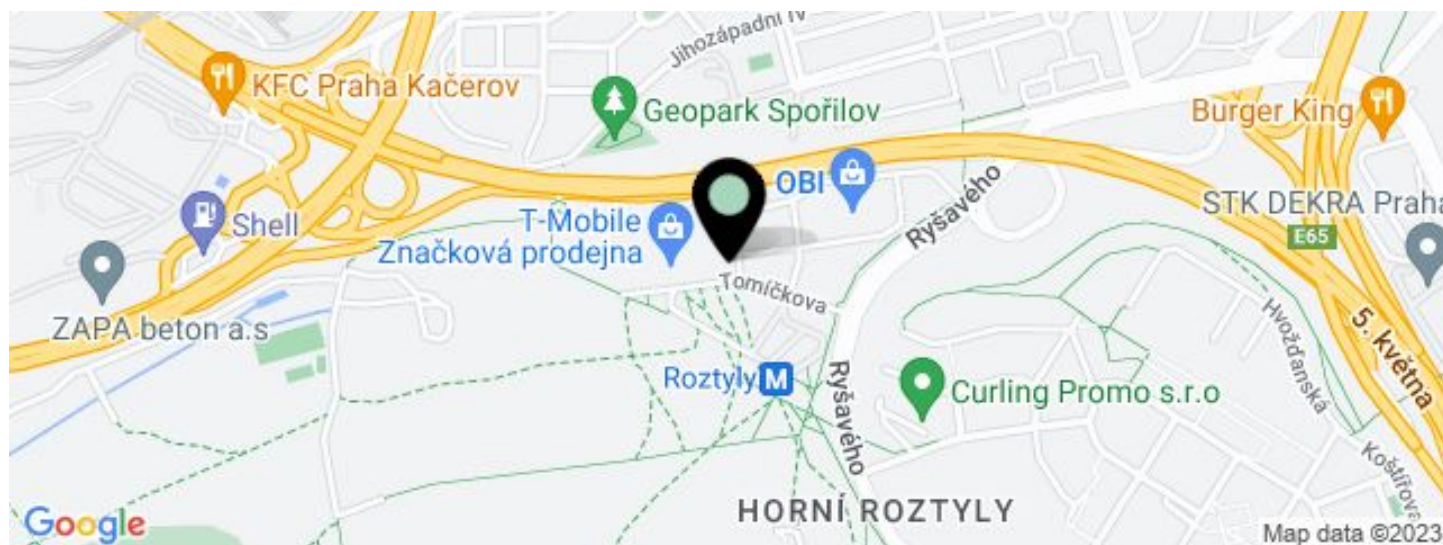
295 m², Prague 4, Chodov, Tomíčková

€ 10.96 / m² | CZK 275 / m²





Office building

€ 10.96 / m² | CZK 275 / m²295 m², Prague 4, Chodov, Tomíčková

UNIT	AVAILABLE AREA	SERVICES	PARKING	MONTHLY RENT
Sublease, Office space, 4th floor	295 m ²	0 CZK monthly per m ²	Yes	€ 10.96 / m ²



Office building

295 m², Prague 4, Chodov, Tomíčková

€ 10.96 / m² | CZK 275 / m²

Total building area	19 303 m ²
Tenant consumption	—
Parking	Yes
Parking service charges	—
Parking ratio	—
Certification	—
PENB	G
Reference number	35158

Office building offers office space for sublease in Prague 4. For tenants there is a café, canteen or bistro in the building. Bicycle racks and showers can also be used. The building was built in 2002 and was designed by the Czech architect Lubomír Zeman.

Location:

The building is located in the immediate vicinity of the Roztyly (line C) metro station and bus stop. Direct connection to the Prague Ring Road and D1 motorway.

Features and services:

Parking
Canteen, bistro, cafe
Bicycle stands
Showers
Possibility to place company logo

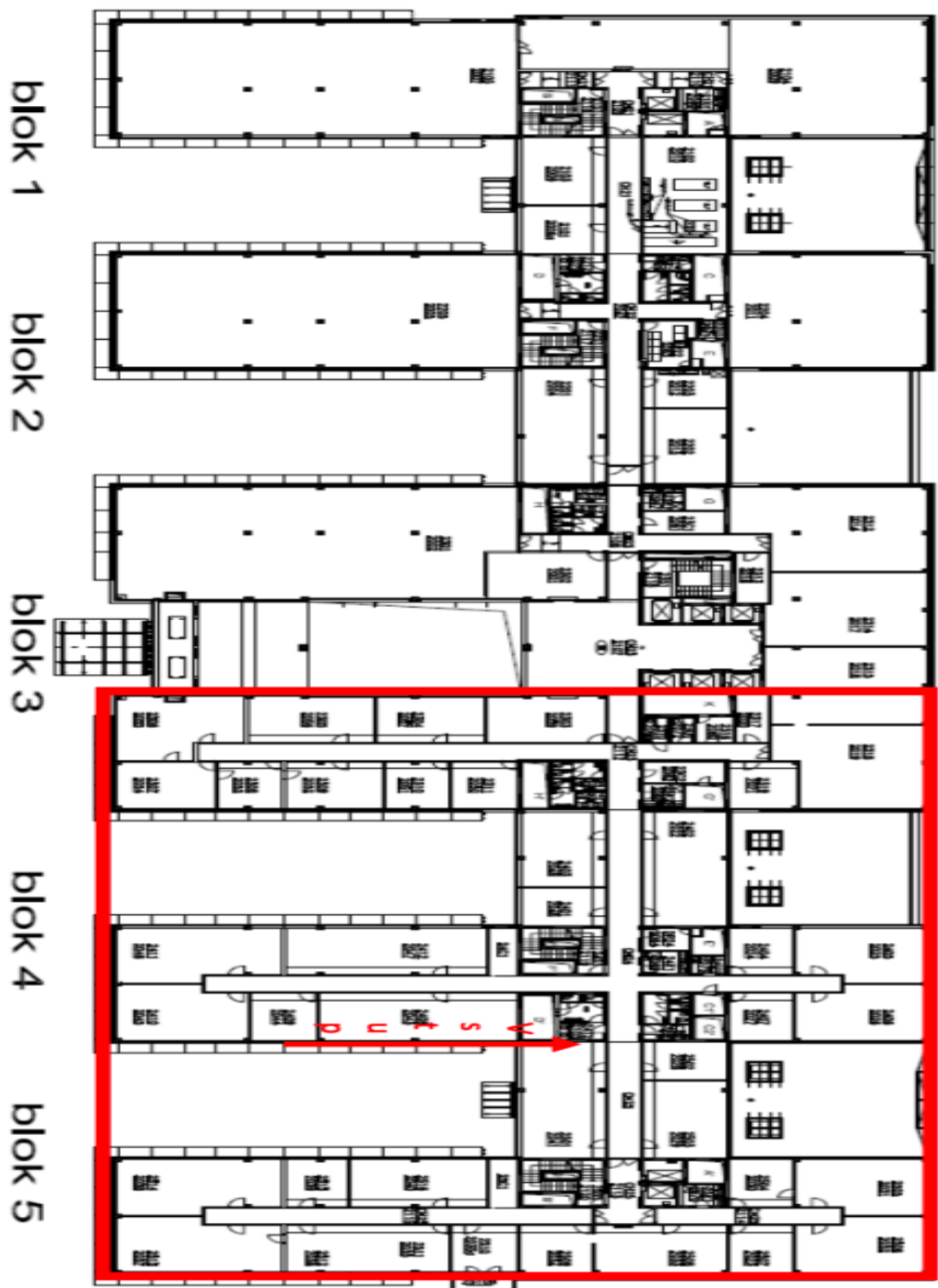
Rental and service charges listed without VAT. Lessee pays no commission.



Office building

295 m², Prague 4, Chodov, Tomíčková

€ 10.96 / m² | CZK 275 / m²

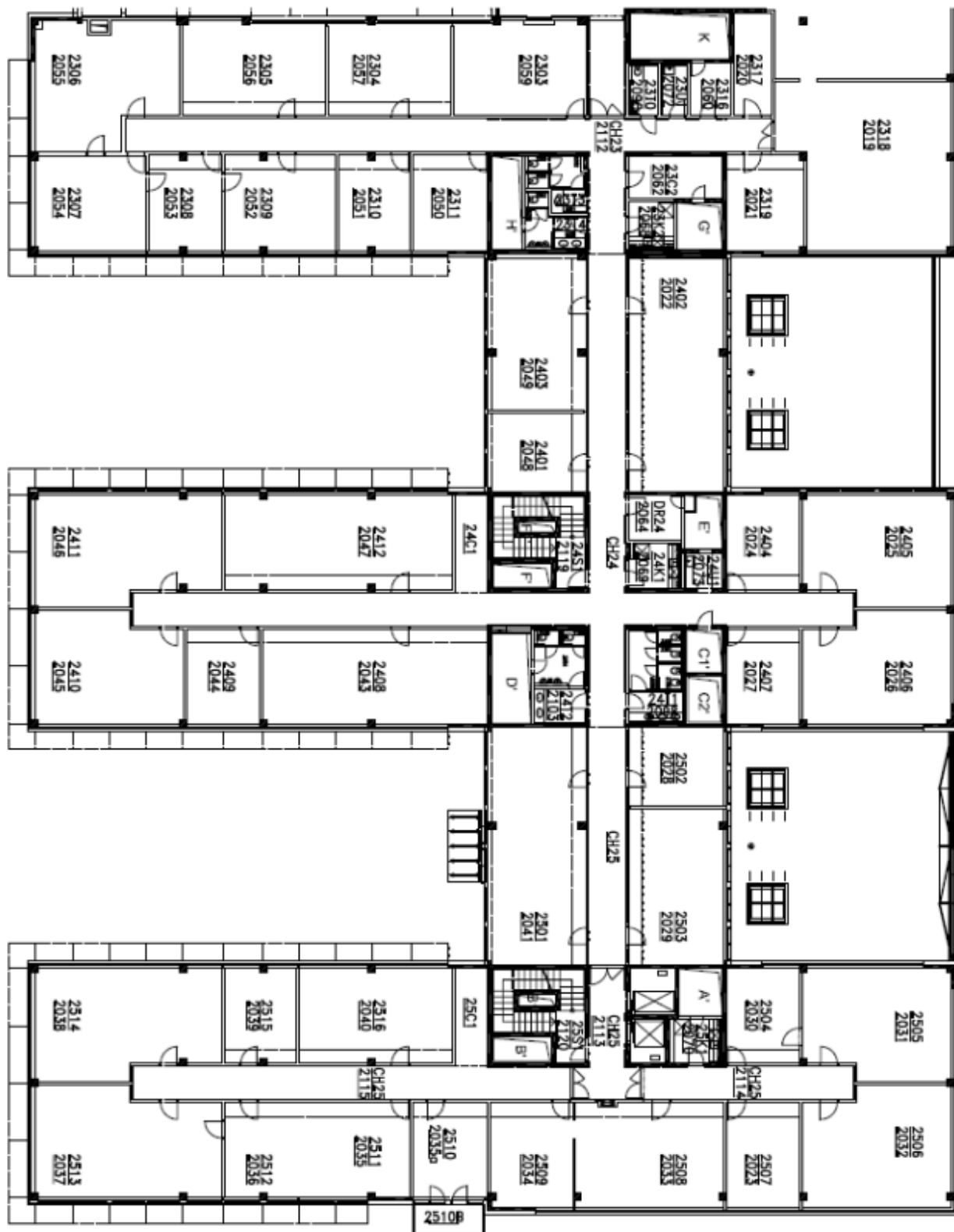




1. patro

blok 4

blok 5

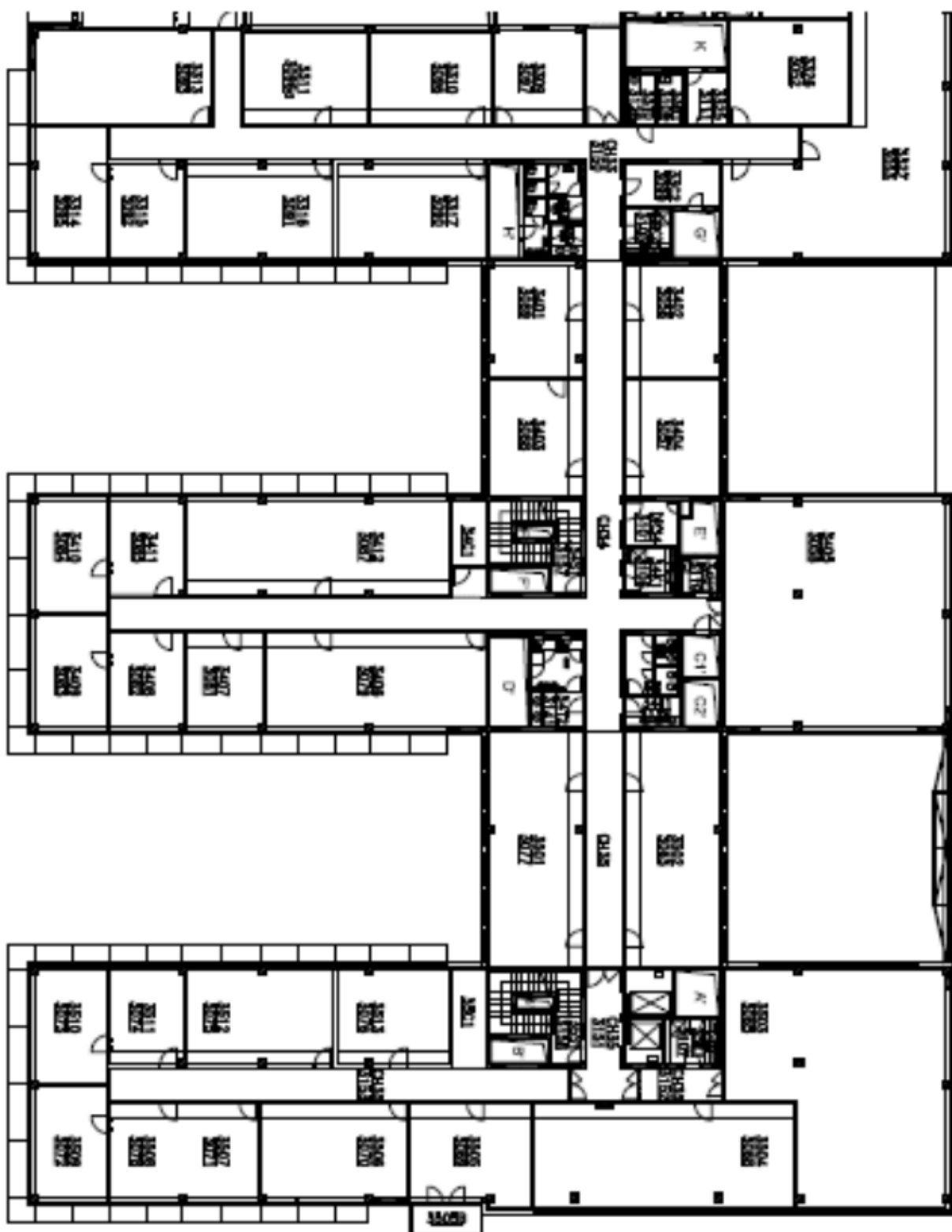




2. patro

blok 4

blok 5





Office building

295 m², Prague 4, Chodov, Tomíčková

€ 10.96 / m² | CZK 275 / m²

