



Office space

Rented

Prague 4, Chodov, Tomičkova





Office space

Rented

Prague 4, Chodov, Tomičkova

| | |
|------------------|--------------------|
| Available area | 287 m ² |
| Cellar | - |
| Parking | Yes |
| PENB | G |
| Reference number | 35159 |

Office space for sublease on the 1st floor in Prague 4. For tenants there is a café, canteen or bistro in the building. Bicycle racks and showers can also be used. The building was built in 2002 and was designed by the Czech architect Lubomír Zeman.

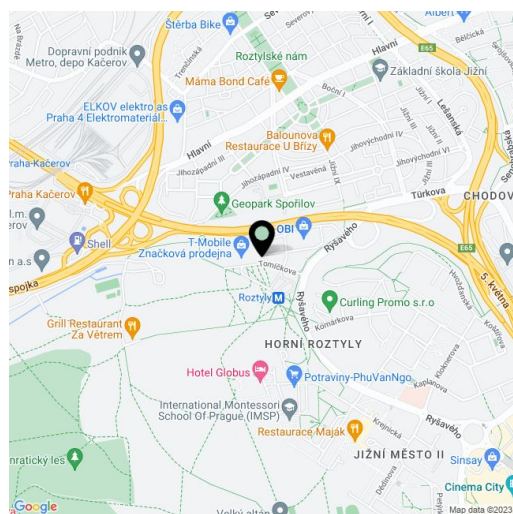
Location:

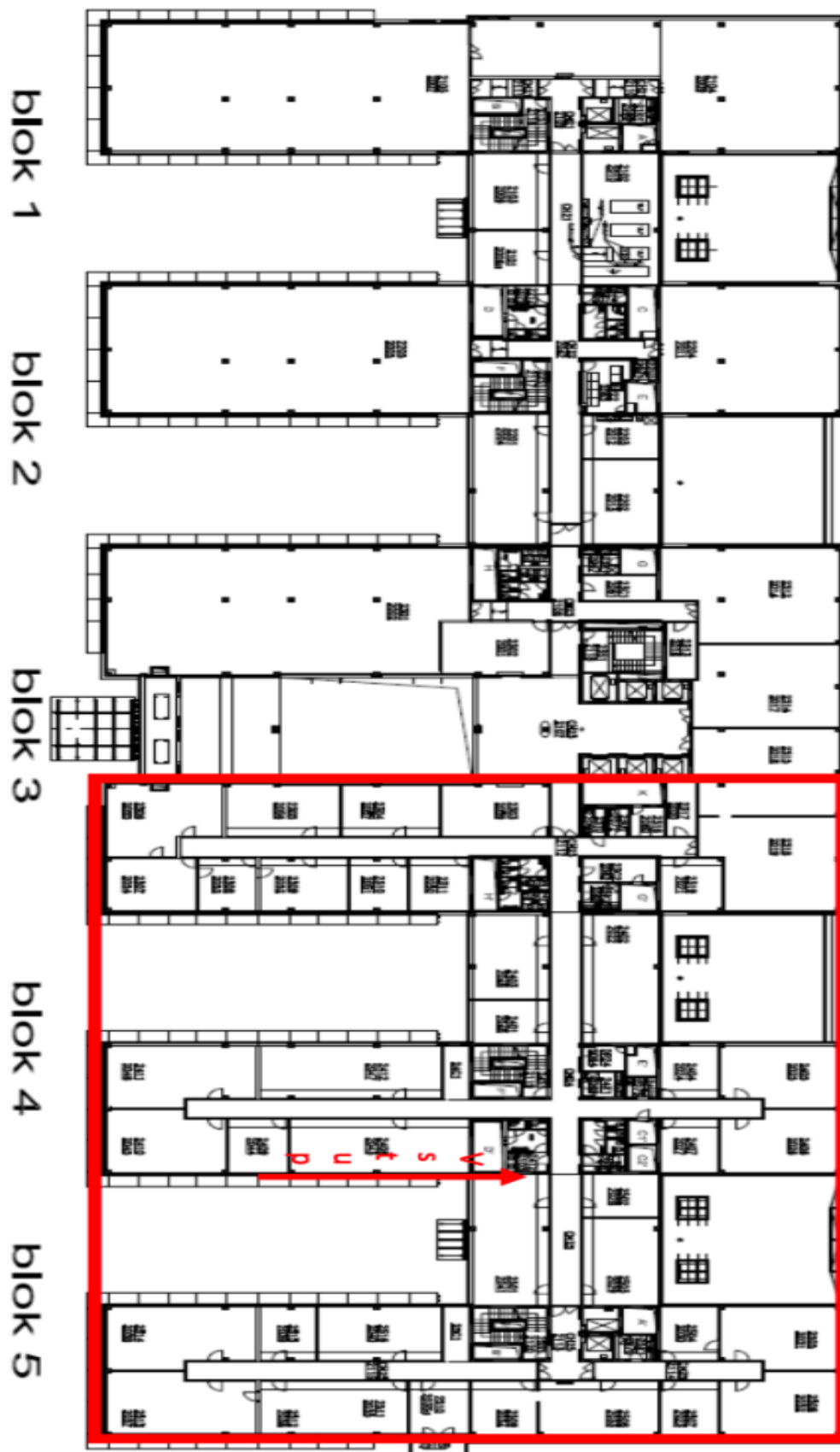
The building is located in the immediate vicinity of the Roztyly (line C) metro station and bus stop. Direct connection to the Prague Ring Road and D1 motorway.

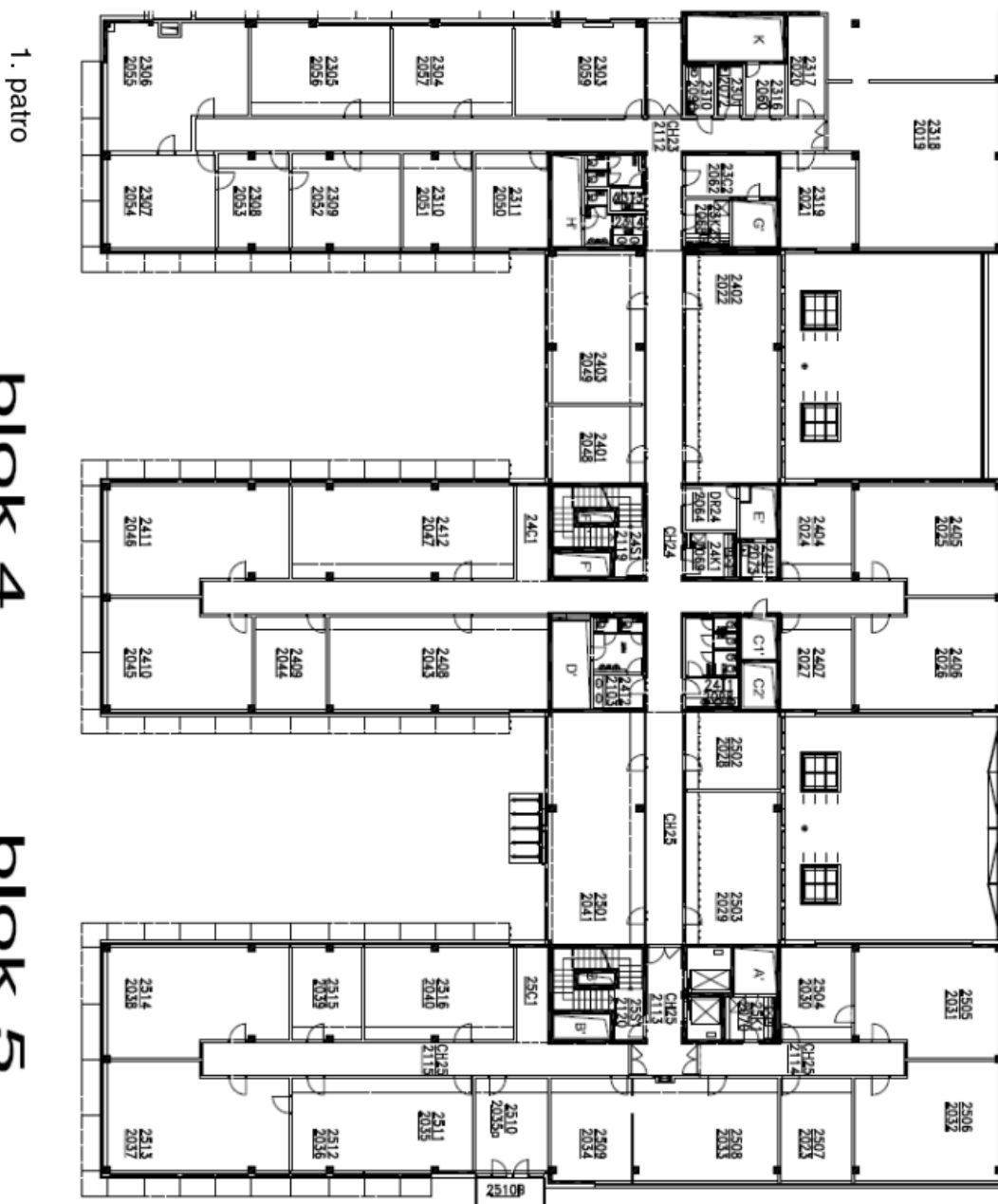
Features and services:

- Parking
- Canteen, bistro, cafe
- Bicycle stands
- Showers
- Possibility to place company logo

Rental and service charges listed without VAT. Lessee pays no commission.







1. patro

blok 4

blok 5