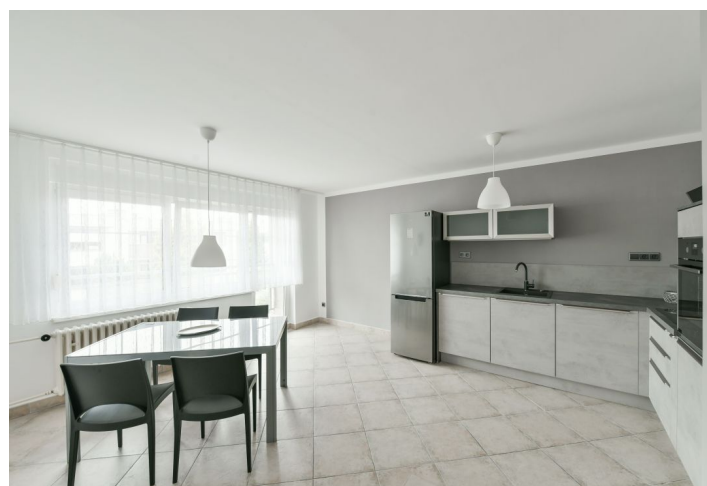




Apartment Two-bedroom (3+1)

€ 994 | CZK 25 000

110 m², Prague 6, Břevnov, Moravanů





Apartment Two-bedroom (3+1)

€ 994 | CZK 25 000

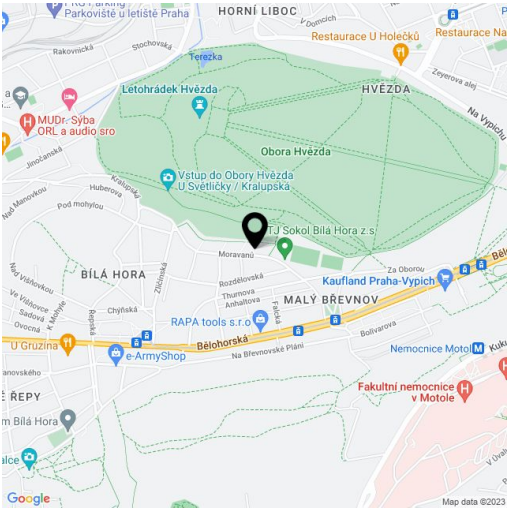
110 m², Prague 6, Břevnov, Moravanů

Total area	120 m²
Floor area*	110 m²
Balcony	10 m²
Parking	Parking space for two cars in front of the house.
Cellar	-
PENB	G
Reference number	35209
Available from	Immediately

Boasting close proximity to the Hvězda Park, this is a furnished 2-bedroom apartment with 2 enclosed balconies, on the first floor of a townhouse in a quiet and green residential neighborhood in Bílá Hora, Prague 6. Located just moments from the Hvězda Summer Castle and Park, close to Šárka and Ladronka Parks, within easy reach of the airport and international schools. Good access to amenities and the city center (trams, buses), just a few stops to the Petřiny metro station, line A.

The interior features a brand new fully fitted kitchen with a dining area and an **enclosed balcony** facing the quiet street, a living room with a study area, and two bedrooms facing the garden - one also with an **enclosed balcony**. There is a shower room, a separate toilet, and an entrance hall.

Large windows, tiles, external blinds, central heating, dishwasher, TV. Monthly deposit for service charges, water and heating: CZK 4000. Electricity will be transferred to the tenant.



* Area of the unit according to the Civil Code. The area consists of the sum total area of the entire unit bounded by perimeter walls.