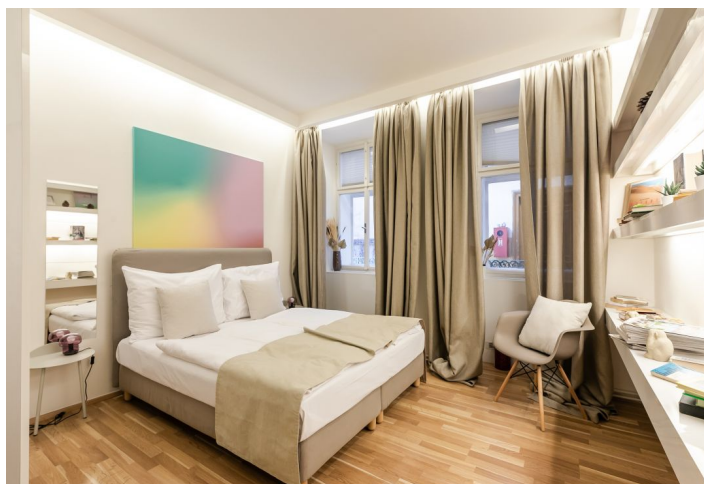




## Apartment Two-bedroom (3+kk)

Rented

100 m<sup>2</sup>, Prague 1, Nové Město, Opatovická





## Apartment Two-bedroom (3+kk)

Rented

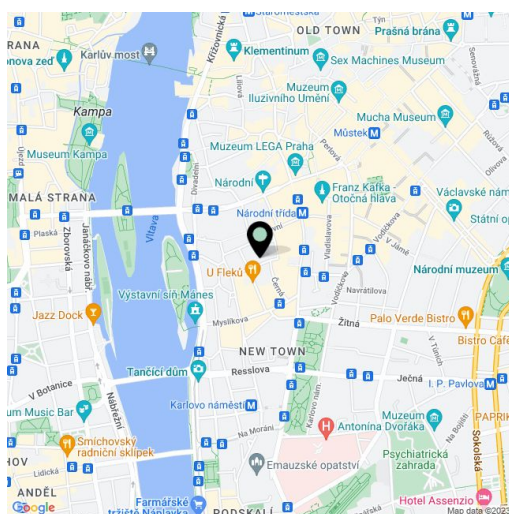
100 m<sup>2</sup>, Prague 1, Nové Město, Opatovická

Total area	100 m <sup>2</sup>
Parking	-
Cellar	-
PENB	G
Reference number	35287
Available from	Immediately

Furnished, fully refurbished 2-bedroom apartment on the 1st floor of a building with no elevator right in the center of Prague. A quiet location moments from the Vltava embankment and the National Theatre, with tram and metro connections (Národní třída).

The apartment offers a living room with a fully fitted kitchen, 2 bedrooms, a bathroom, and an entry hall.

Wooden floors, tiles, plenty of built-in storage space, security door, central switch, alarm, audio entry phone. Service charges (CZK 1,000/person/month) and utilities are billed separately.



\* Area of the unit according to the Civil Code. The area consists of the sum total area of the entire unit bounded by perimeter walls.