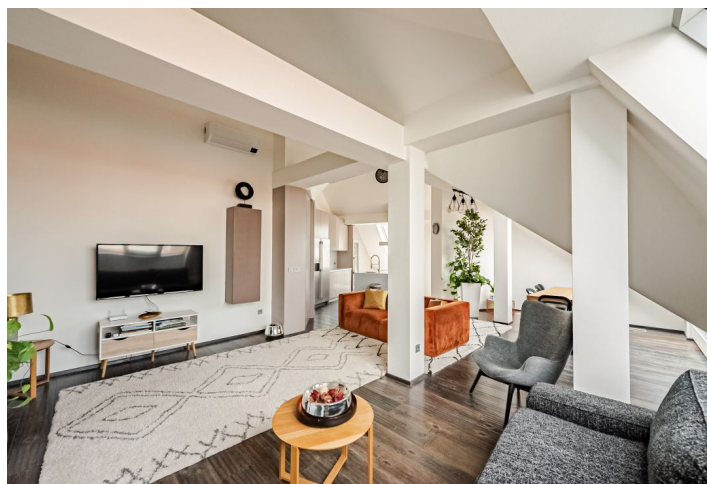




## Apartment Three-bedroom (4+kk)

Rented

171 m<sup>2</sup>, Prague 1, Nové Město, Navrátilova





## Apartment Three-bedroom (4+kk)

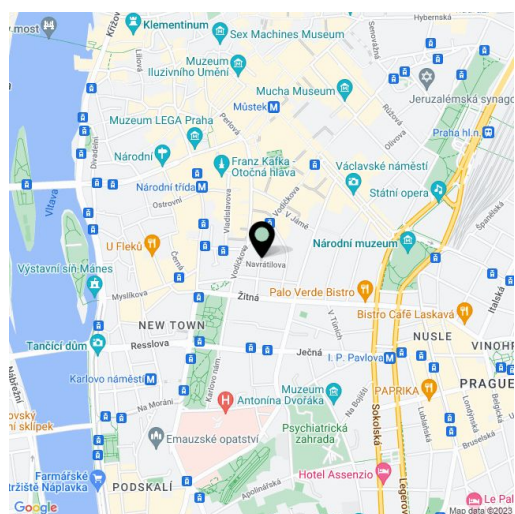
**Rented**171 m<sup>2</sup>, Prague 1, Nové Město, Navrátilova

Total area	171 m <sup>2</sup>
Parking	-
Cellar	-
PENB	G
Reference number	35288
Available from	Immediately

This contemporary, designer 3-bedroom furnished apartment for rent is on the 5th floor of a traditional building with an elevator on a quiet street in an attractive central location within walking distance of Wenceslas and Karlovo squares with metro and tram connections.

The apartment includes a living room with a fully fitted open plan kitchen, 3 bedrooms (one with a large walk-in closet), a bathroom (large bathtub, sink, toilet), a guest toilet, and an entry hall.

Air-conditioning, wooden floors, security door, atelier windows, gas boiler, bidet showers, central switch, alarm, audio entry phone. Common building charges CZK 1,000/person/month. Gas and electricity will be transferred to the tenant.



\* Area of the unit according to the Civil Code. The area consists of the sum total area of the entire unit bounded by perimeter walls.