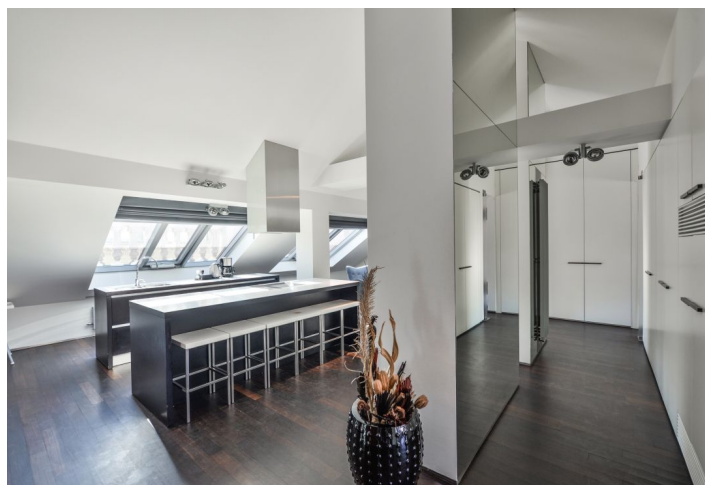
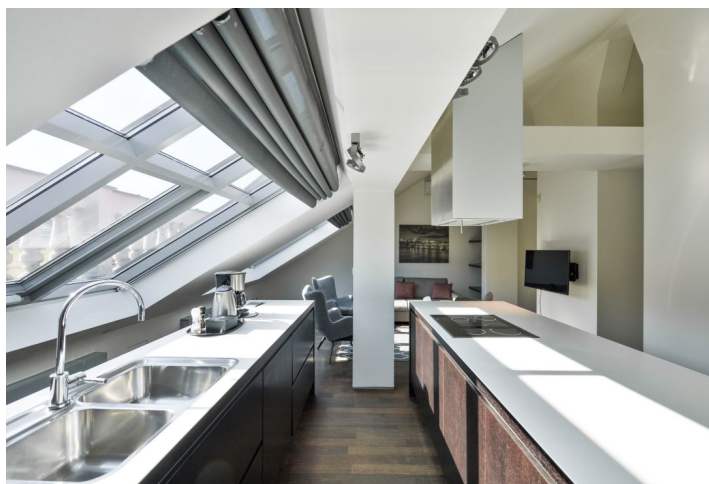




## Apartment Two-bedroom (3+kk)

Rented

115 m<sup>2</sup>, Prague 1, Nové Město, Zlatnická





## Apartment Two-bedroom (3+kk)

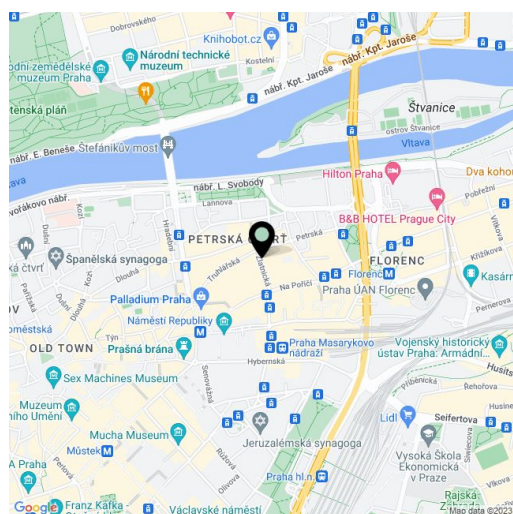
Rented

115 m<sup>2</sup>, Prague 1, Nové Město, Zlatnická

Total area	115 m <sup>2</sup>
Parking	-
Cellar	-
PENB	G
Reference number	35300
Available from	Immediately

Furnished architect designed completely refurbished 1-bedroom attic apartment situated on the top floor with lift in a traditional building just moments from Náměstí Republiky Square with metro station and trams. Ideally centrally located for quality dining, entertainment and shopping. Within walking distance of Florenc metro station, lines B and C.

The interior includes a fully fitted kitchen open to the living room, two bedrooms, a bathroom with a bathtub, shower, and a sink, and a toilet with bidet. Air-conditioning, wood floors, washer, dryer, security door, alarm, video entry phone. Quiet despite central location. Common building charges CZK 1000/person/month. Utilities are billed separately.



\* Area of the unit according to the Civil Code. The area consists of the sum total area of the entire unit bounded by perimeter walls.



## Apartment Two-bedroom (3+kk)

Rented

115 m<sup>2</sup>, Prague 1, Nové Město, Zlatnická

