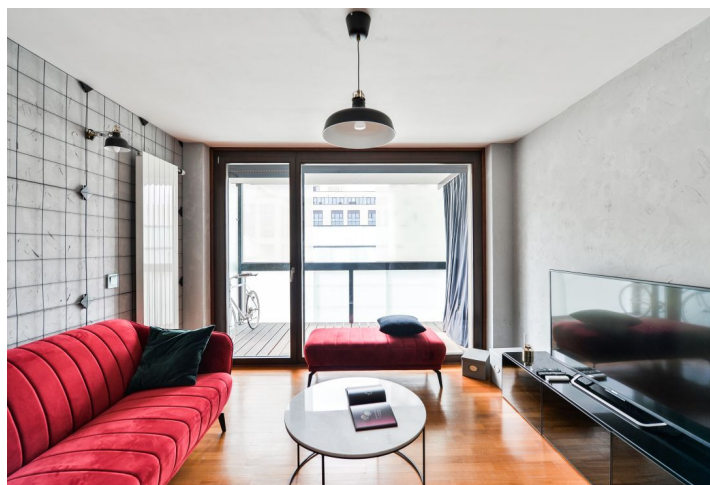
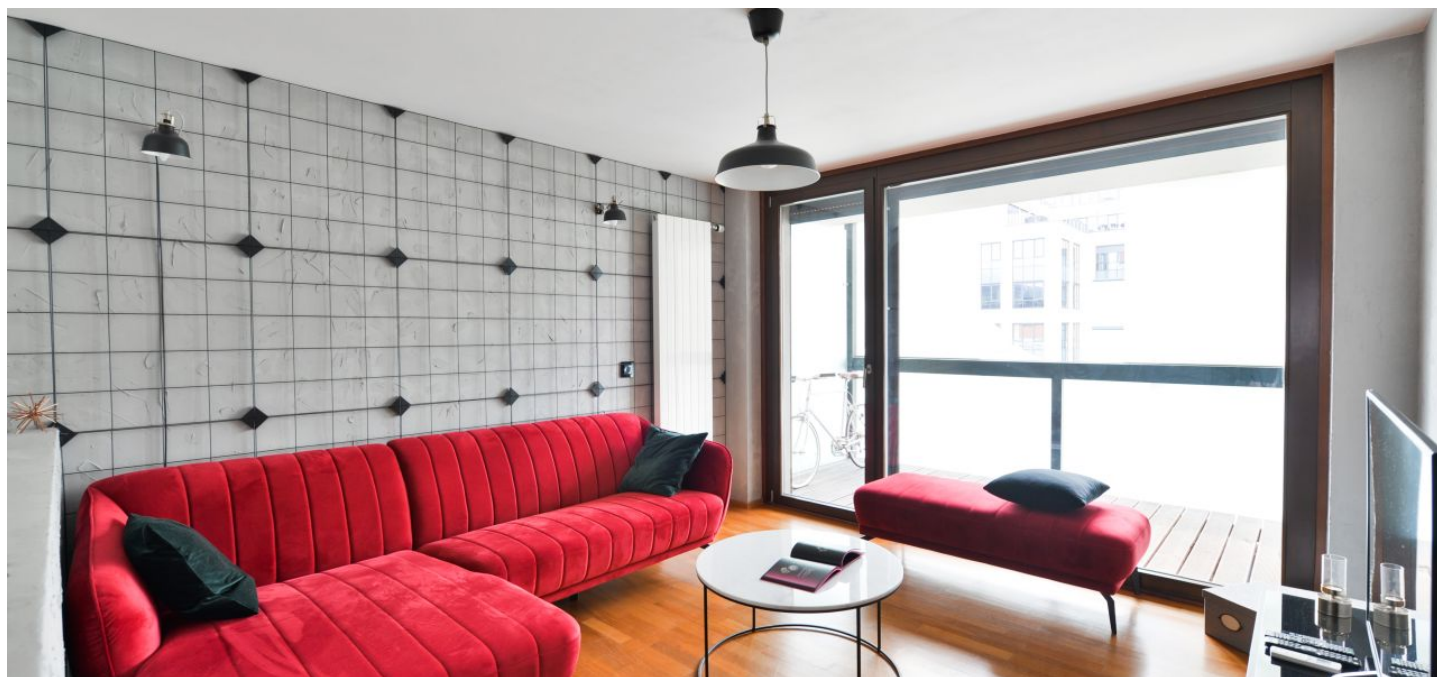




Apartment One-bedroom (2+1)

88 m², Prague 8, Karlín, Šaldova

€ 1 616 | CZK 40 000





Apartment One-bedroom (2+1)

€ 1 616 | CZK 40 000

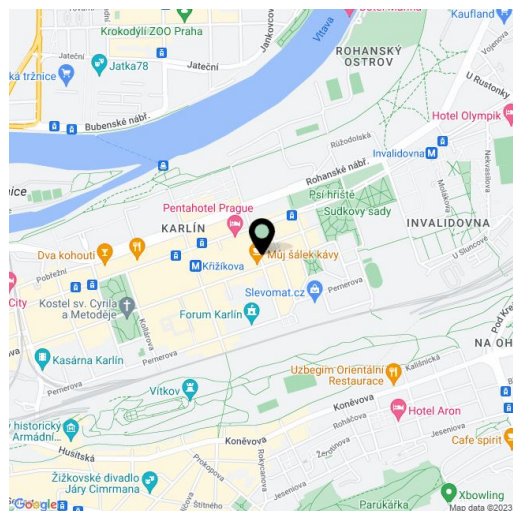
88 m², Prague 8, Karlín, Šaldova

Total area	104 m²
Floor area*	88 m²
Loggia	16 m²
Parking	Garage parking.
Garage	Yes
Cellar	-
PENB	C
Reference number	35304
Available from	Immediately

Benefiting from 2 enclosed balconies providing green views of the courtyard and the nearby Vítkov Hill, this is a completely furnished, high standard 1-bedroom 3-level attic apartment on the fourth floor of the Cornlofts Šaldova project. The modern residence is set in a quiet street in a highly sought after Prague 8 neighborhood, in close vicinity of the Karlín business zone. Location with quick connections to the city center, just three minutes from a tram stop and Křižíkova metro station. Building amenities include a lift, security cameras, a shared landscaped courtyard garden and underground parking.

The ground floor of the apartment includes an entrance hall and a storage room. The first floor offers a living room with access to the **enclosed balcony** with storage space, a fully fitted kitchen with a dining area, plus a guest toilet. The second floor features an **air-conditioned** bedroom with built-in wardrobes and access to the second **enclosed balcony**, plus a bathroom with a bathtub and a toilet.

New designer equipment, quality materials and finishes, hardwood floors, mosaic tiles, security entry door, external blinds operated by remote control, Philips smart lighting, central heating, washing machine, dishwasher, American type fridge, microwave oven, kitchenware, floor-to-ceiling chalkboard in the kitchen, air purifier, Dyson vacuum cleaner, TV. A **garage parking** space is included. Service charges, water and heating deposit: CZK 4000/month. Electricity is billed separately. Available from May 1, 2020.



* Area of the unit according to the Civil Code. The area consists of the sum total area of the entire unit bounded by perimeter walls.