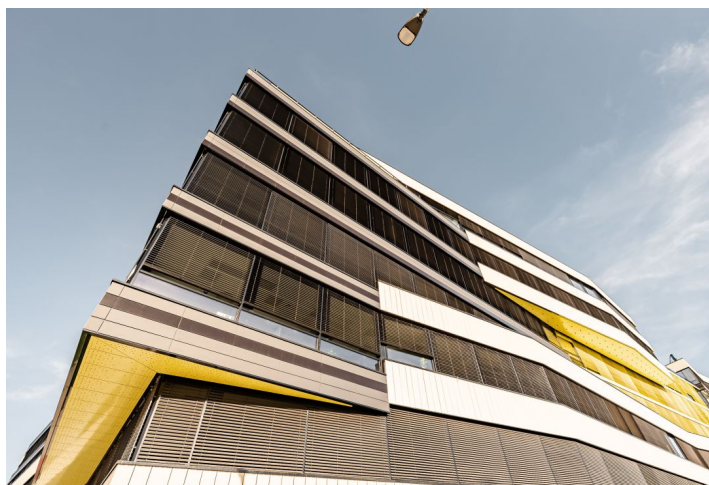




## Retail space

Prague 8, Libeň, Boudníkova

Rented



**Retail space****Rented**

Prague 8, Libeň, Boudníkova

<b>Service price</b>	130 CZK monthly per m <sup>2</sup>
<b>Available area</b>	671 m <sup>2</sup>
<b>Min. area</b>	160 m <sup>2</sup>
<b>Parking</b>	Yes
<b>PENB</b>	G
<b>Reference number</b>	35337

The six storey office building with office and retail premises for lease in Prague 8 - Libeň. Nearby subway station Palmovka (line B), together with tram and bus hubs, ensure easy access to other parts of Prague. Easy connection to the Prague ring and to the D8, D10 and D11 highways. Suitable for gastro.

**Features and Services:**

- 24/7 Security / Reception
- Raised floors with floor boxes and electricity sockets
- HVAC
- Suspended ceiling with installed lighting
- Connection points for data and telephone cabling
- Openable windows, blinds
- Installation points for kitchenette
- Warehouse space
- Underground parking

Rental and service charges listed without VAT. Lessee pays no commission.

