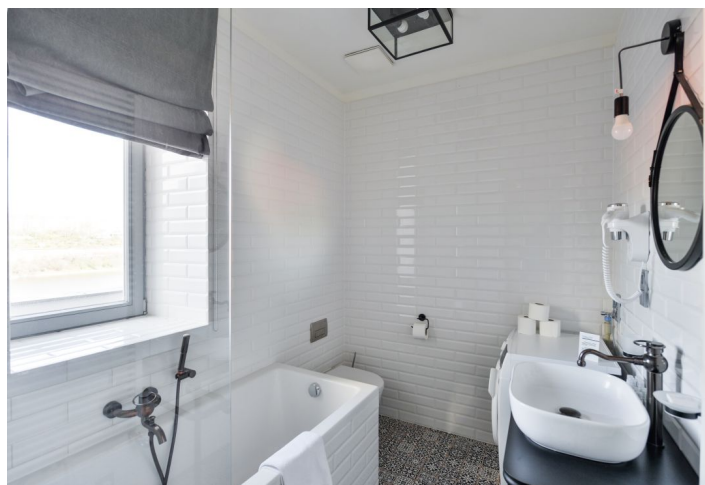
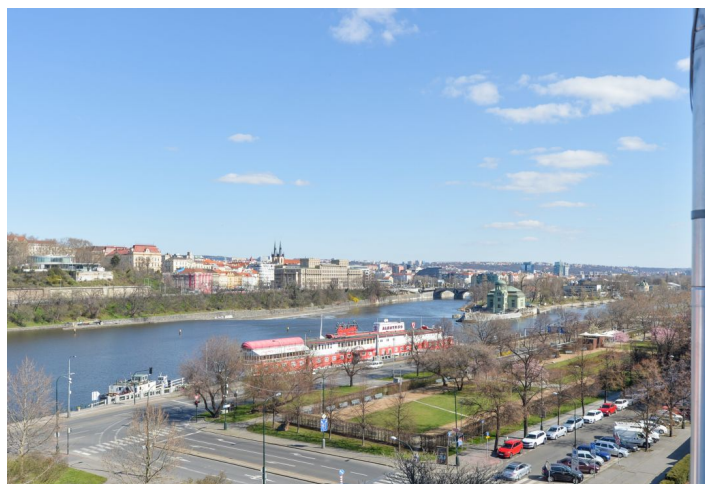




Apartment One-bedroom (2+kk)

Rented

90 m², Praha 1, Nové Město, Revoluční





Apartment One-bedroom (2+kk)

Rented

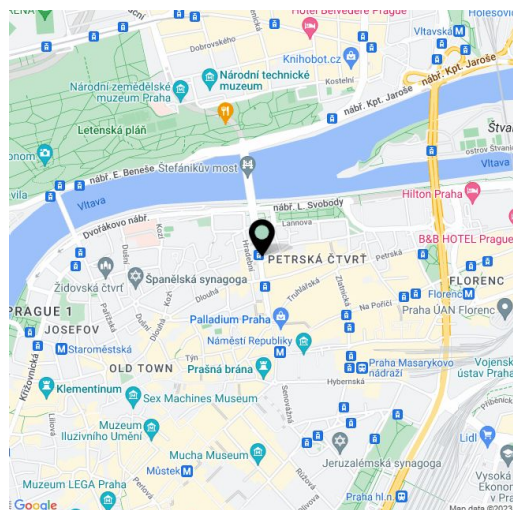
90 m², Praha 1, Nové Město, Revoluční

Total area	98 m ²
Floor area*	90 m ²
Terrace	8 m ²
Parking	-
Cellar	-
PENB	D
Reference number	35359
Available from	Immediately

Boasting a terrace and views of the Vltava river and the Letná Park, this modern, fully air-conditioned 1-bedroom attic apartment complete with stylish furniture is on the 5th floor in a fully renovated residential building with a lift. Set just a few steps from the náměstí Republiky Square, within easy reach of complete amenities incl. the Palladium and Kotva shopping malls, the Divadlo v Dlouhé Theater, quality restaurants, cafes, and clubs. The Náměstí Republiky metro station (line B) is just two minutes walk away, there is a tram stop steps from the building, and it is a short walk to the Lannova Park, the courtyard garden in the Convent of St. Agnes and the Letná Park on the opposite bank of the Vltava River.

The interior of the apartment features a living room with a dining area, a fully fitted open kitchen and **terrace** access, a bedroom with a **large gallery**, a bathroom including a bathtub and a toilet, and open entrance hall with built-in wardrobes.

Air-conditioning, hardwood floors, tiles, built-in storage, gas heating, washer / dryer, dishwasher, kitchenware, iron and ironing board, garden furniture, TV, alarm. Monthly deposit for service charges and water: CZK 1000/person. Deposit for gas and electricity: CZK 3000/month.



* Area of the unit according to the Civil Code. The area consists of the sum total area of the entire unit bounded by perimeter walls.