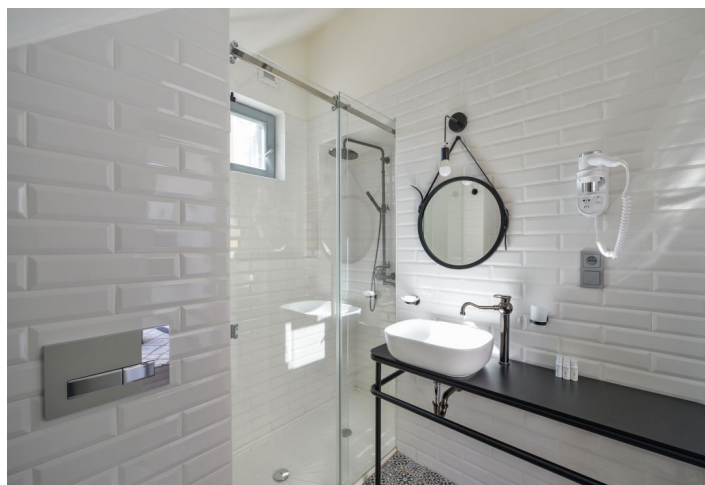




Apartment Studio (1+kk)

Rented

52 m², Prague 1, Nové Město, Revoluční





Apartment Studio (1+kk)

Rented

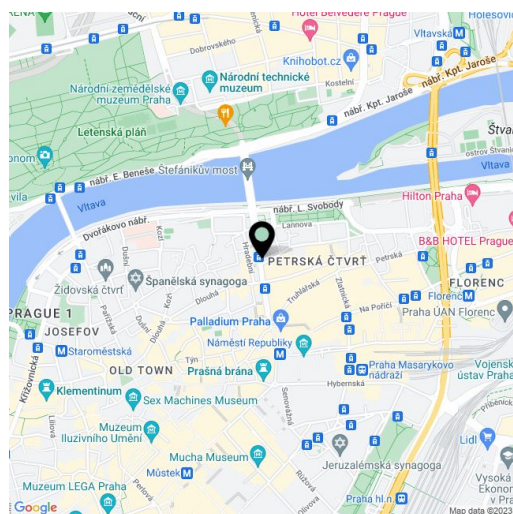
52 m², Prague 1, Nové Město, Revoluční

Total area	52 m ²
Parking	-
Cellar	-
PENB	D
Reference number	35362
Available from	Immediately

Offering views of the Vltava River and Štvanice Island, this fully air-conditioned attic studio apartment, complete with stylish furniture, is situated on the 6th floor of a fully renovated residential building with an elevator. Set just a few steps from náměstí Republiky Square, within easy reach of complete amenities incl. the Palladium and Kotva shopping malls, the Divadlo v Dlouhé Theater, quality restaurants, cafes, and clubs. The Náměstí Republiky metro station (line B) is just a two-minute walk away, there is a tram stop mere steps from the building, and it is only a short walk to Lannova Park, the courtyard garden in the Convent of St. Agnes, and Letná Park on the opposite bank of the Vltava River.

The apartment features a living room/bedroom, a fully fitted walk-through kitchen, a sitting area with French windows and pleasant views, a shower room with a toilet, and an open entrance hall.

Air-conditioning, hardwood floors, tiles, atelier windows, built-in wardrobes, gas heating, washer, dryer, dishwasher, microwave oven, kitchenware, an iron and ironing board, TV, alarm. Monthly deposit for service charges and water: CZK 1,000/person. Deposit for gas and electricity: CZK 2,000/month.



* Area of the unit according to the Civil Code. The area consists of the sum total area of the entire unit bounded by perimeter walls.