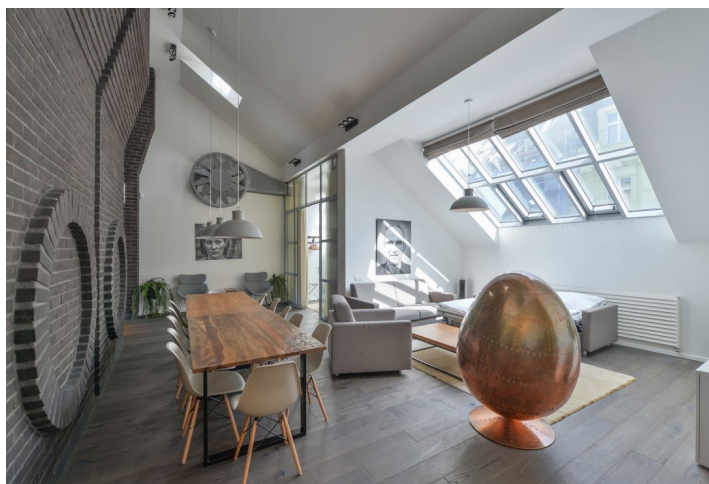
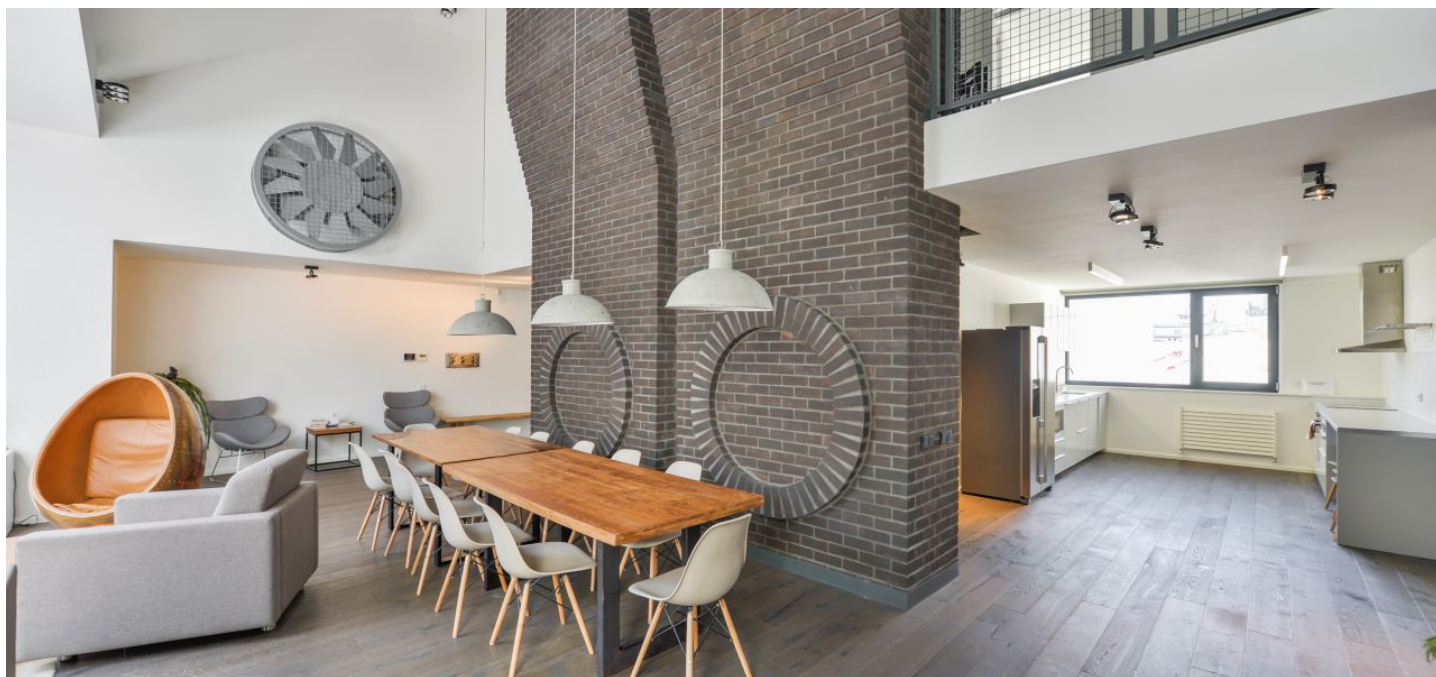




## Apartment Four-bedroom (5+kk)

Rented

194 m<sup>2</sup>, Prague 1, Nové Město, Dlážděná





## Apartment Four-bedroom (5+kk)

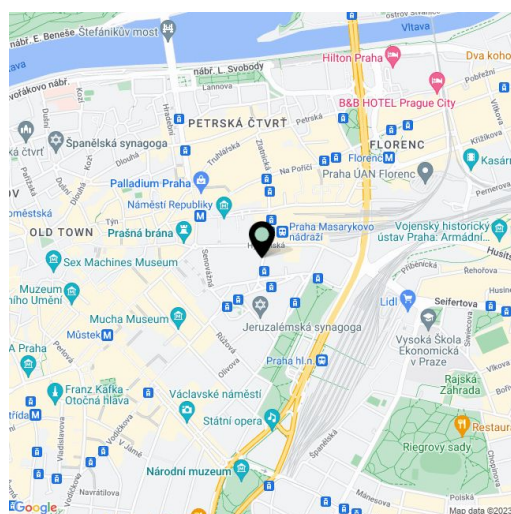
**Rented**194 m<sup>2</sup>, Prague 1, Nové Město, Dlážděná

Total area	194 m <sup>2</sup>
Parking	-
Cellar	-
PENB	G
Reference number	35367
Available from	Immediately

Boasting stylish modern furniture, this fully air-conditioned 4-bedroom 2-bathroom split-level attic apartment is on the 4th floor of a residential building with an elevator. Centrally located just moments from the Main Railway Station, the Masaryk Railway Station, and a tram stop, a few min. walk from Wenceslas Square with all three Prague metro lines and full amenities in the area. Just a short walk from the historic center with numerous sights and historic monuments, cultural venues, and quality shops, cafes, and restaurants.

The lower level features an **impressive living room** with a double height ceiling and dining area, a fully fitted open plan kitchen, two bedrooms, a shower room with a toilet, and a large open entrance hall with built-in wardrobes and storage. The upper floor includes a **gallery** with built-in wardrobes, two bedrooms with floor-to-ceiling windows overlooking a landscaped garden in the courtyard, plus a bathroom with a bathtub, a bidet, and a toilet.

**Stylish equipment, air-conditioning, hardwood floors, large-format tiles, security entry door, gas boiler, washer/dryer, dishwasher, induction cooktop, microwave oven, TV, master switch, chip access to the building.** Monthly deposit for service charges and water: CZK 1,600/person. Gas and electricity will be transferred to the tenant. Available from February 2023 (or earlier upon agreement).



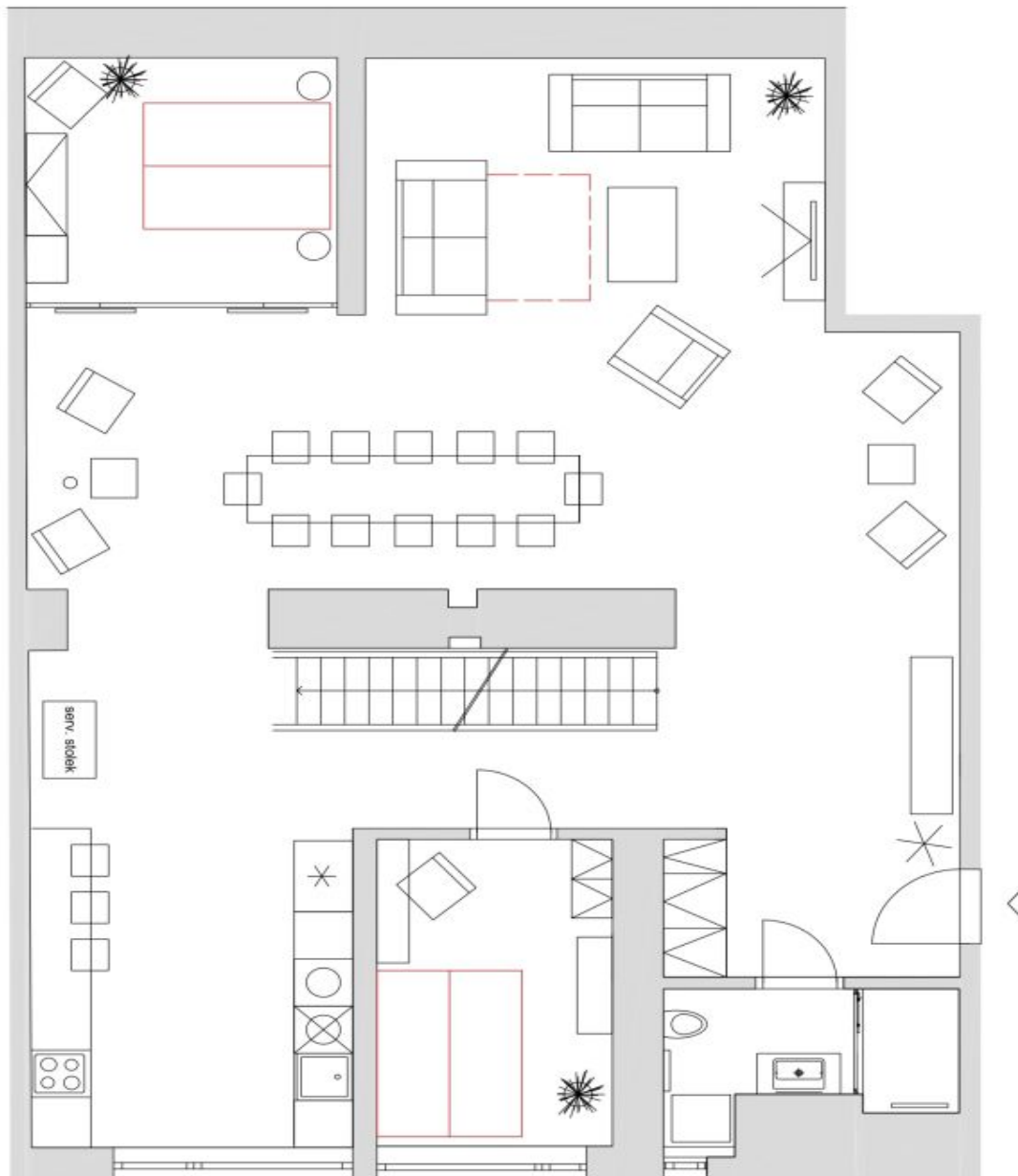
\* Area of the unit according to the Civil Code. The area consists of the sum total area of the entire unit bounded by perimeter walls.



## Apartment Four-bedroom (5+kk)

Rented

194 m<sup>2</sup>, Prague 1, Nové Město, Dlážděná





## Apartment Four-bedroom (5+kk)

194 m<sup>2</sup>, Prague 1, Nové Město, Dlážděná

Rented

