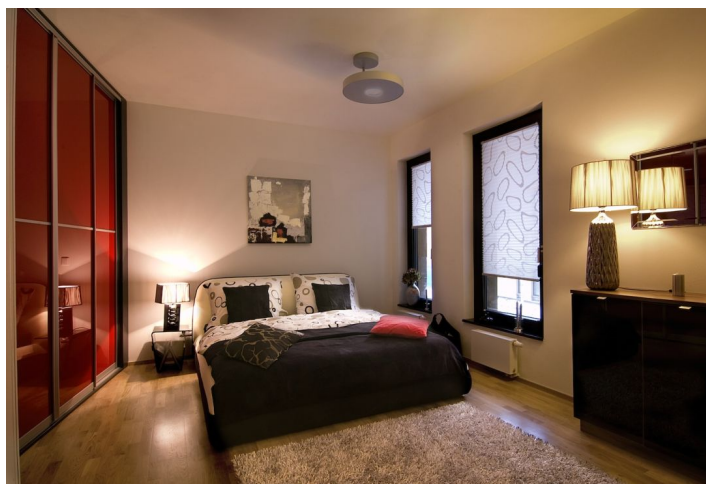




Apartment Two-bedroom (3+kk)

Sold

99 m², Praha 4, Michle, Baarova





Apartment Two-bedroom (3+kk)

Sold99 m², Praha 4, Michle, Baarova

Total area	105 m ²
Floor area*	99 m ²
Balcony	6 m ²
Parking	Yes
Garage	Yes
Cellar	Yes
PENB	G
Reference number	354

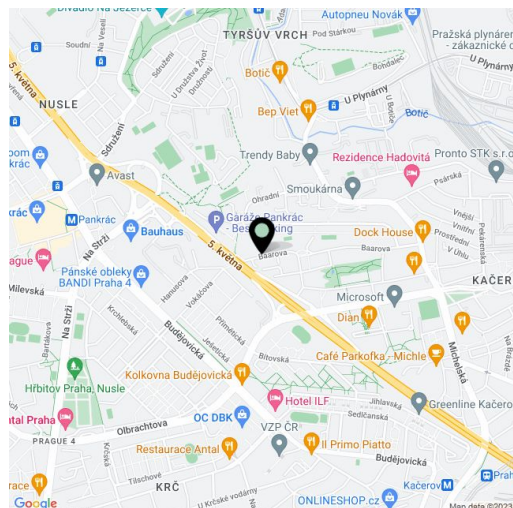
Spacious 1st floor apartment with balcony in building B of a new residential development. The project is urbanistically connected to the commercial BB Centrum through a newly created park.

The apartment offers generous living room with dining area, kitchen corner (preparation) and balcony, 2 bedrooms, study, bathroom, guest toilet and utility room.

The apartment features security entrance door Lignis with stainless steel fittings. Wooden floors come either in Ash or Oak. Furnishing standards offer two options– classic and modern. Bathroom fittings by Laufen and Grohe, tiling by La Faenza / Imola Ceramica.

The residence with 24hour reception offers modern lifestyle in an area with full range of amenities.

Interior 99.9 m², balcony 5.6 m², cellar 6.3 m²



* Area of the unit according to the Civil Code. The area consists of the sum total area of the entire unit bounded by perimeter walls.



Apartment Two-bedroom (3+kk)

99 m², Praha 4, Michle, Baarova

Sold

