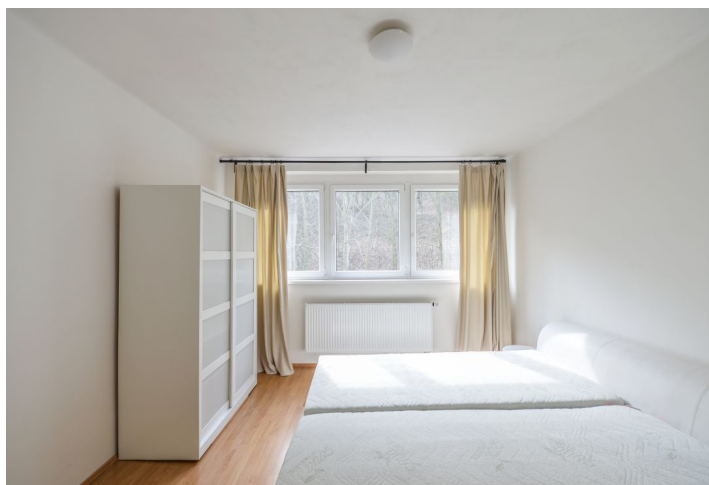




## Apartment Two-bedroom (3+1)

Rented

75 m<sup>2</sup>, Prague 5, Smíchov, Pod Kesnerkou





## Apartment Two-bedroom (3+1)

Rented

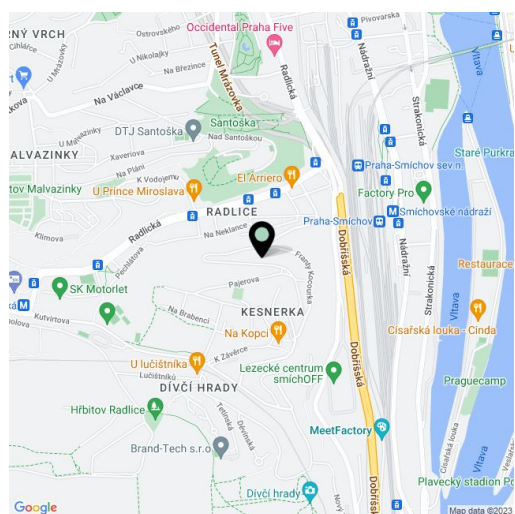
75 m<sup>2</sup>, Prague 5, Smíchov, Pod Kesnerkou

Total area	75 m <sup>2</sup>
Parking	Parking on the plot at an additional fee.
Cellar	-
PENB	G
Reference number	35405
Available from	Immediately

This is a furnished 2-bedroom attic apartment on the second floor in a free standing house with a garden and a common sauna in the basement. Directly adjacent to the Kesnerka forest park, the house is located in a quiet Prague 5 residential neighborhood in close vicinity of the Santoška Park and the Prokopské valley, within easy reach of the Nový Smíchov / Anděl and Zličín commercial centers. Regular bus connections to Anděl metro, a bus stop is just a few minutes from the house. A tram stop with a 2-minute connection to the Radlická metro station is also located nearby.

The apartment consists of a fully fitted eat-in kitchen, a living room, two separate bedrooms, a bathroom with a bathtub and a toilet, and an entrance hall. The tenants can use the common **sauna** in the basement of the house, the common garden, barbecue grill and smokehouse.

Floating floors, tiles, blinds, central heating, washing machine. Covered **parking** on the plot is available at CZK 1000/month. Service charges, water and heating bills: CZK 2900/month for two persons. Electricity is billed separately (transfer to the tenant).



\* Area of the unit according to the Civil Code. The area consists of the sum total area of the entire unit bounded by perimeter walls.