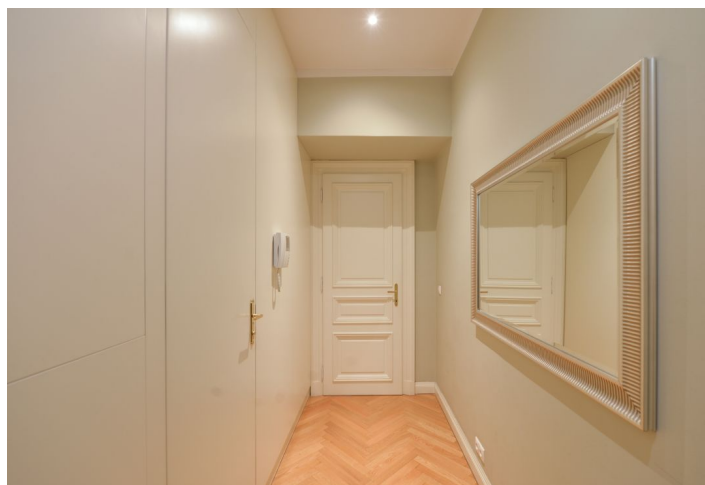




Apartment Studio (1+kk)

30 m², Praha 1, Staré Město, Liliová

Rented





Apartment Studio (1+kk)

Rented

30 m², Praha 1, Staré Město, Liliová

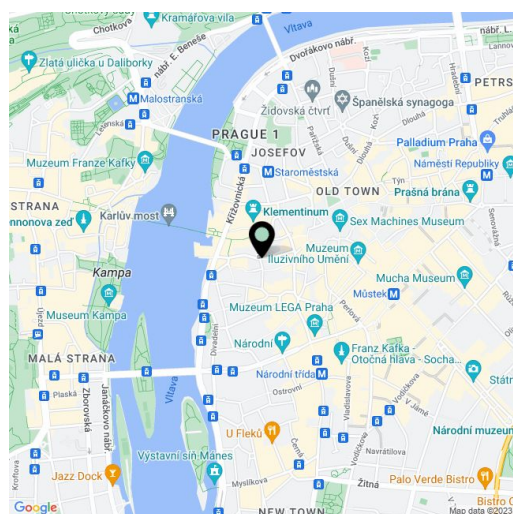
Total area	30 m ²
Parking	-
Cellar	-
PENB	G
Reference number	35417
Available from	Immediately

Elegant apartment in Old Town. This air-conditioned studio apartment with designer furniture is on the first floor of a contemporary residence – part of a 17th century Classicist complex that has been meticulously renovated. Cleverly combining original and modern features, the residence won the Best Residential Development title at the Czech Cij 2008 Awards. Amenities include a 24/7 reception and security, elevators, and an attractive courtyard garden with benches. Located in the very center of historic Prague, on a charming cobblestone street just moments from Old Town Square, the Charles Bridge, and numerous historic sights, within easy reach of quality amenities, dining, shopping, cafes, cultural venues, and more. Within walking distance of the Staroměstská and Národní třída tram and metro stops, and the Můstek metro station at the bottom of Wenceslas Square.

The interior features a living room/bedroom with a fully fitted open plan kitchen and dining area, plus a bathroom with a walk-in shower and a toilet.

Stylish furnishings and decor, air-conditioning, hardwood parquet floors, ceramic tiles, central heating, washer, dishwasher, microwave oven, kitchenware, TV, WiFi, satellite TV connection. Service charges, energies, and Internet connection CZK 5,400/month. Flexible lease terms - available for mid and long-term rent (minimum of 1 month).

In addition to regular property viewings, we also offer **real-time video viewings** via WhatsApp, FaceTime, Messenger, Skype, and other apps.



* Area of the unit according to the Civil Code. The area consists of the sum total area of the entire unit bounded by perimeter walls.

