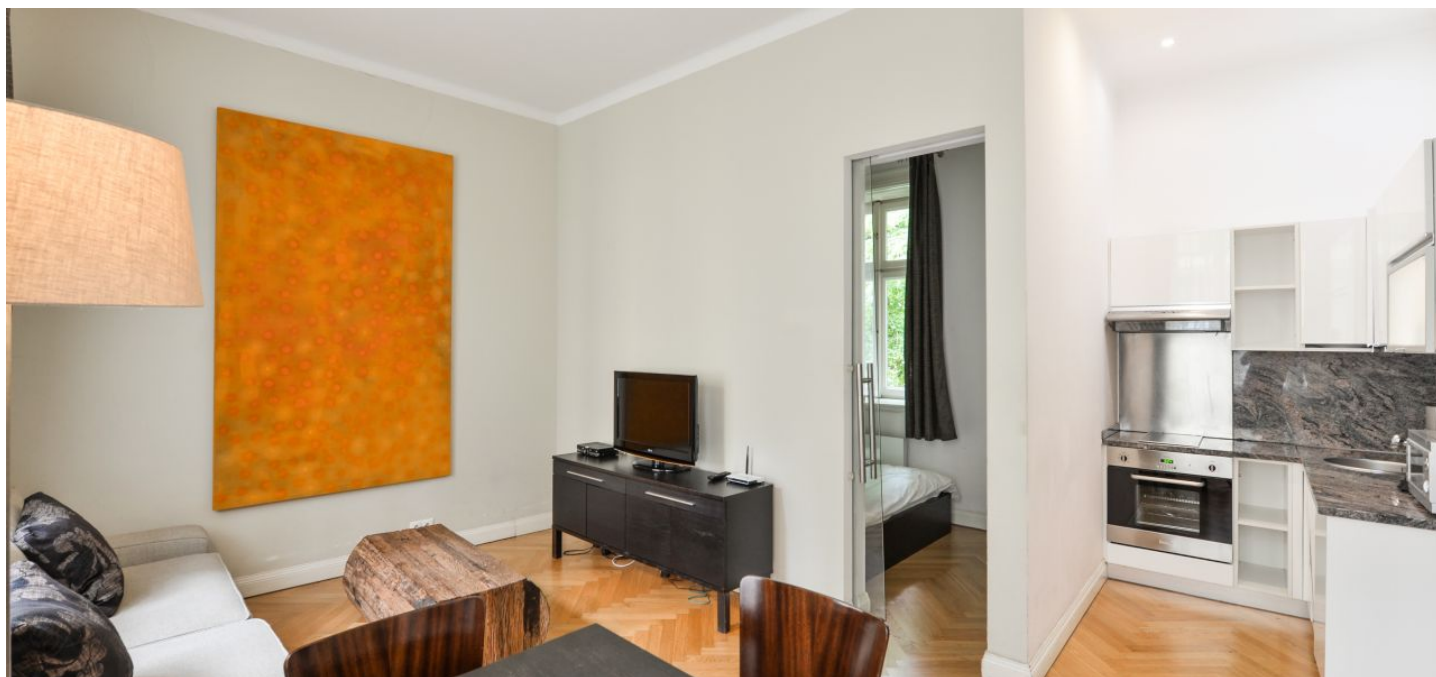




Apartment One-bedroom (2+kk)

Rented

39 m², Prague 1, Staré Město, Liliová





Apartment One-bedroom (2+kk)

Rented

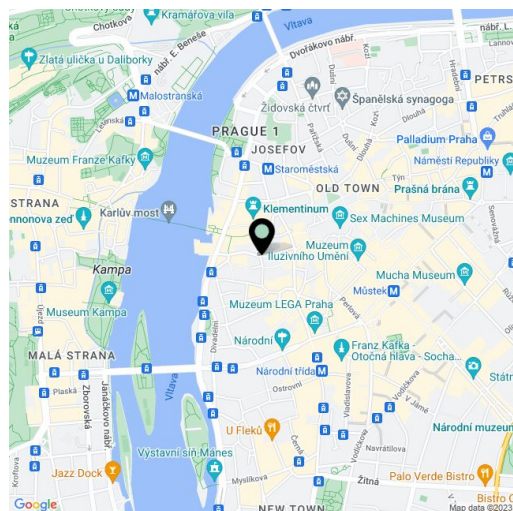
39 m², Prague 1, Staré Město, Liliová

Total area	39 m ²
Parking	-
Cellar	-
PENB	G
Reference number	35422
Available from	Immediately

Attractive apartment in Old Town. This air-conditioned 1-bedroom apartment with designer furniture is on the first floor of a contemporary residence – part of a 17th century Classicist complex that has been meticulously renovated. Cleverly combining original and modern features, the residence won the Best Residential Development title at the Czech CiJ 2008 Awards. Amenities include a 24/7 reception and security, elevators, and an attractive courtyard garden with benches. Located in the very center of historic Prague, on a charming cobblestone street just moments from Old Town Square, the Charles Bridge, and numerous historic sights, within easy reach of quality amenities, dining, shopping, cafes, cultural venues, and more. Within walking distance of the Staroměstská and Národní třída tram and metro stops, and the Můstek metro station at the bottom of Wenceslas Square.

The interior offers a living room with a fully fitted open plan kitchen and dining area, one bedroom, a bathroom with a bathtub and toilet, and an entrance hall.

Stylish furnishings and decor, air-conditioning, hardwood parquet floors, ceramic tiles, central heating, washer/dryer, dishwasher, microwave oven, kitchenware, TV, WiFi, satellite TV connection. Service charges, energies, and Internet connection CZK 6,200/month. Flexible lease terms - available for mid and long-term rent (minimum of 1 month).



* Area of the unit according to the Civil Code. The area consists of the sum total area of the entire unit bounded by perimeter walls.



Apartment One-bedroom (2+kk)

Rented

39 m², Prague 1, Staré Město, Liliová

