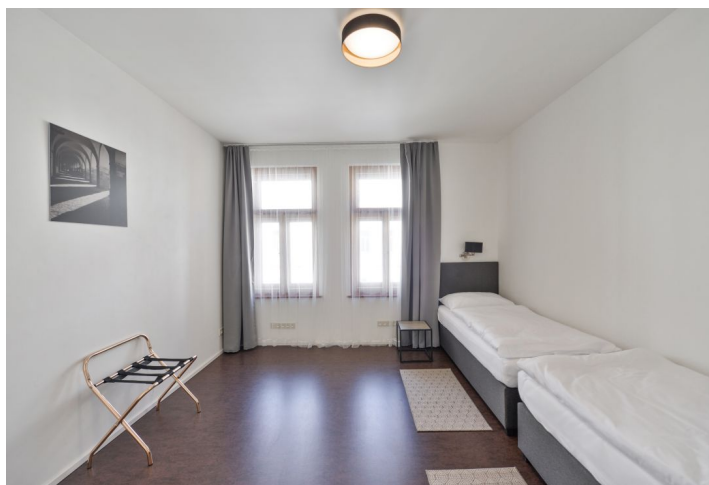




Apartment Two-bedroom (3+kk)

Rented

75 m², Prague 6, Břevnov, Šlikova





Apartment Two-bedroom (3+kk)

Rented

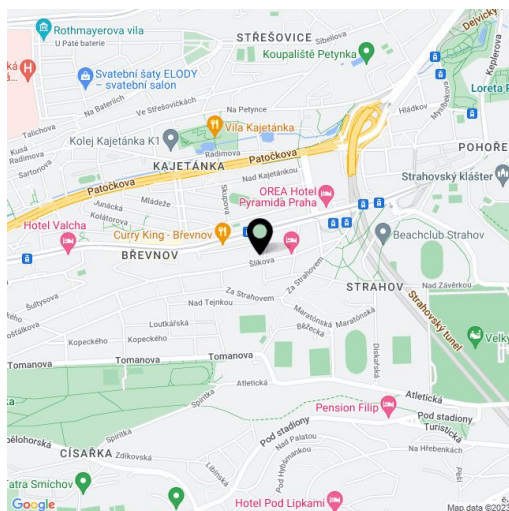
75 m², Prague 6, Břevnov, Šlikova

Total area	75 m ²
Parking	-
Cellar	-
PENB	A
Reference number	35478
Available from	Immediately

Benefiting from a common terrace and garden, this is a quiet, fully furnished 2-bedroom apartment situated on the first floor of a modern residence - a completely renovated residential building from 1903 with preserved original features and a landscape courtyard garden. Located within walking distance of the Prague Castle, near the Kajetánka and Ladronka Parks, in a sought after residential area with excellent amenities and easy access to metro, the city center and Václav Havel Airport.

The interior features a living room with a fully fitted open plan kitchen, a dining area and bay windows facing the **terrace** and **garden**, two separate bedrooms, a bathroom including a bathtub with a shower screen, a separate toilet, and an entrance hall.

Marmoleum and tile floors, security entry door, wooden interior doors, underfloor central heating, induction cooktop, dishwasher, microwave oven, kitchenware, kettle, toaster, TV, WiFi, satellite reception. No lift. Cleaning and change of bed linen is available at an additional fee. Deposit for service charges, utilities, TV and the Internet CZK 3000/month. **Mid term rental is available.**



* Area of the unit according to the Civil Code. The area consists of the sum total area of the entire unit bounded by perimeter walls.