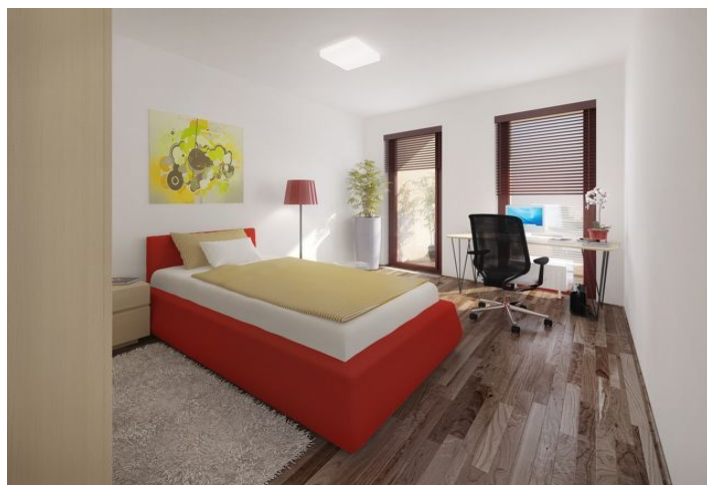
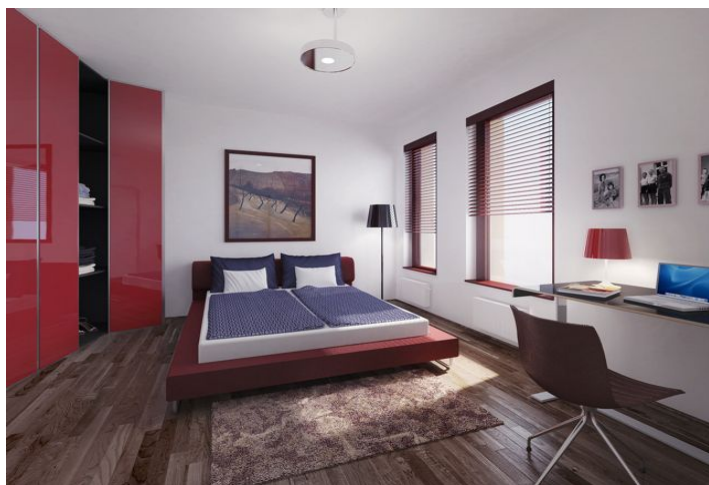




## Apartment Three-bedroom (4+kk)

Sold

110 m<sup>2</sup>, Prague 4, Michle, Baarova





## Apartment Three-bedroom (4+kk)

**Sold**110 m<sup>2</sup>, Prague 4, Michle, Baarova

Total area	110 m <sup>2</sup>
Parking	Yes
Cellar	Yes
PENB	G
Reference number	355

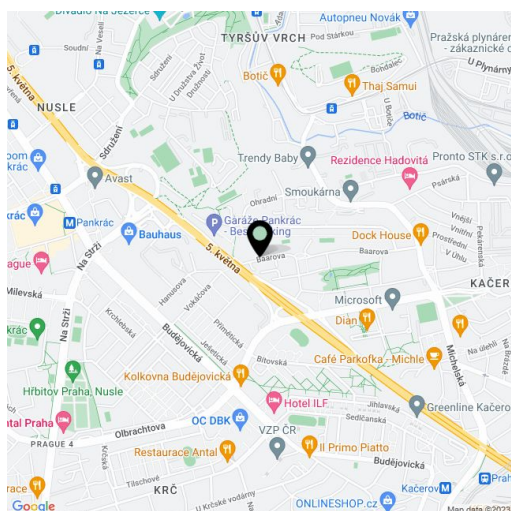
**Spacious apartment with terrace on 3rd floor of building B in a new residential project. The project is urbanistically connected to the commercial BB Centrum through a newly created park.**

The apartment offers generous living room with dining area, kitchen corner (preparation) opening onto the terrace, 2 bedrooms, study, bathroom, guest toilet and utility room.

The apartment features security entrance door Lignis with stainless steel fittings. Wooden floors come either in Ash or Oak. Furnishing standards offer two variants – classic and modern. Bathroom fittings by Laufen and Grohe, tiling by La Faenza / Imola Ceramica.

The residence with 24hour reception offers modern lifestyle in an area with full range of amenities.

Interior 100.7 m<sup>2</sup>, terrace 9.9 m<sup>2</sup>, cellar 7 m<sup>2</sup>



\* Area of the unit according to the Civil Code. The area consists of the sum total area of the entire unit bounded by perimeter walls.



# Apartment Three-bedroom (4+kk)

Sold

110 m<sup>2</sup>, Prague 4, Michle, Baarova

