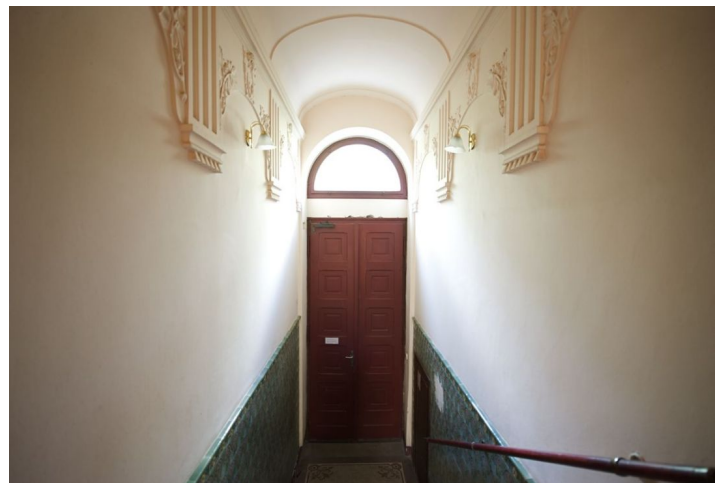
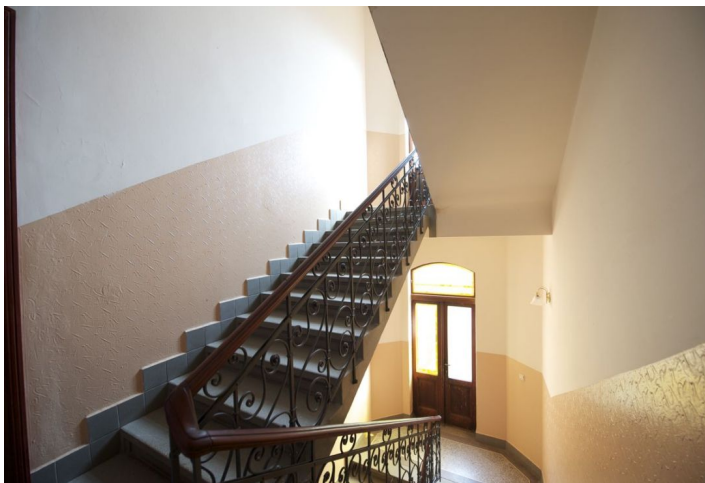




## Apartment Two-bedroom (3+1)

Rented

86 m<sup>2</sup>, Prague 2, Vinohrady, Chopinova





## Apartment Two-bedroom (3+1)

Rented

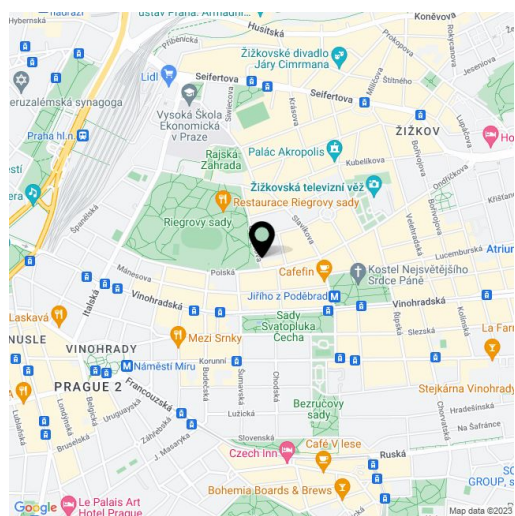
86 m<sup>2</sup>, Prague 2, Vinohrady, Chopinova

Total area	86 m <sup>2</sup>
Parking	Garage parking for extra cost if available.
Cellar	-
PENB	G
Reference number	3550
Available from	Immediately

**Spacious 2-bedroom unfurnished flat situated on the upper ground floor of a refurbished Art Nouveau building. Located in a quiet street next to Riegrovy Sady Park, 5 minutes from Muzeum metro station and tram stop.**

There is a living room, fully fitted eat-in kitchen, 2 bedrooms, entry hall, bathroom with tub and a separate toilet.

Preserved original features, parquet and tile floors, washer, dishwasher, telephone line, UPC cable TV connection, security door, gas heating. Common building charges and deposit for utilities approx. CZK 3500/mo.



\* Area of the unit according to the Civil Code. The area consists of the sum total area of the entire unit bounded by perimeter walls.



# Apartment Two-bedroom (3+1)

Rented

86 m<sup>2</sup>, Prague 2, Vinohrady, Chopinova

