



House Six-bedroom (7+1)

Rented

340 m², Praha 6, Nebušice, Nebušická





House Six-bedroom (7+1)

340 m², Praha 6, Nebušice, Nebušická

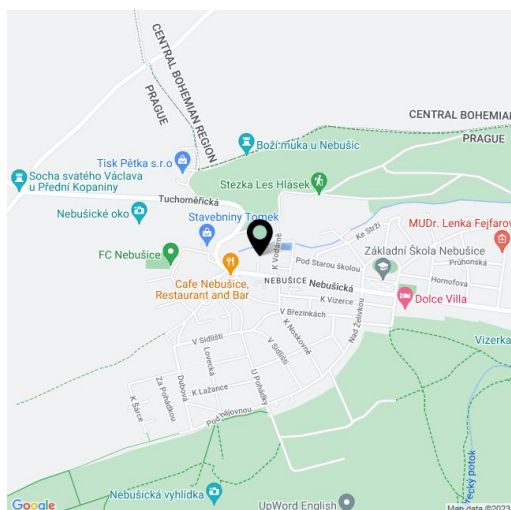
Rented

Plot	453 m ²
Foot print	133 m ²
Garden	320 m ²
Parking	Double garage.
Cellar	-
PENB	G
Reference number	3551
Available from	Immediately

Recently built, sun-drenched semi-detached 5-bedroom 5-bathroom home with a 443 m² landscaped garden, located in a quiet green Prague 6 neighborhood within easy reach of the Šárecké Valley, just up the road from the International School of Prague.

Plate glass thermal insulated windows and sliding glass doors afford wonderful light and views of the adjacent forest. On the 1st floor is the entrance with a built-in coat closet, a 51m² living room with 3m² balcony, separate 19m² dining area, fully equipped modern kitchen, pantry and WC. Upstairs is the master bedroom with full bathroom en-suite and walk-in closet, plus 3 children's bedrooms, each with its own shower bathroom en-suite. At the garden level are one bedroom, full bathroom, 2 storage rooms, laundry room with washer and dryer, large family room and kitchenette.

Built-in wardrobes, parquet and heated tile floors, phone, satellite TV and Internet connections throughout. A sophisticated alarm system possible to connect to a security agency. Garage with direct access to the house.

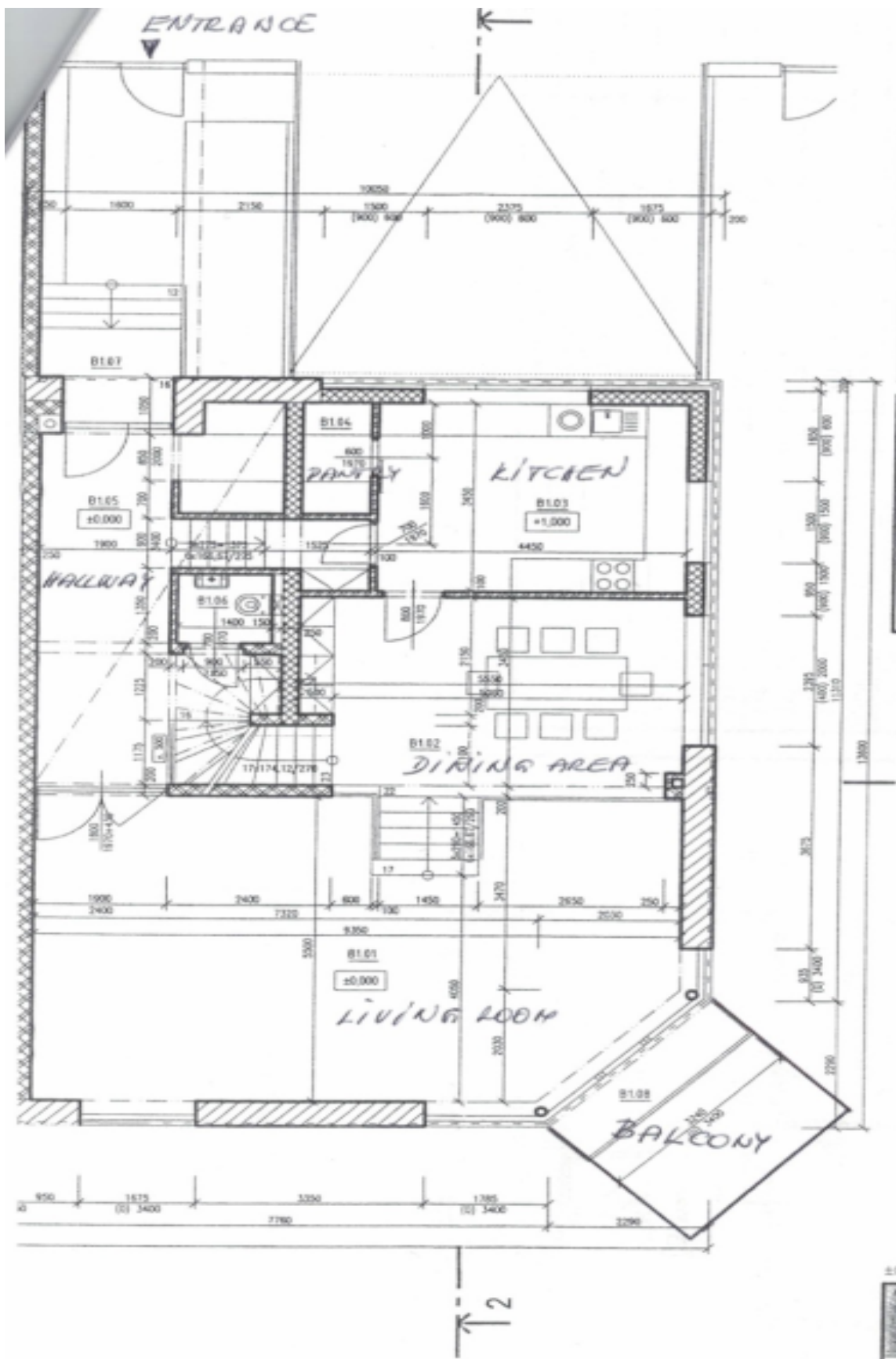




House Six-bedroom (7+1)

Rented

340 m², Praha 6, Nebušice, Nebušická

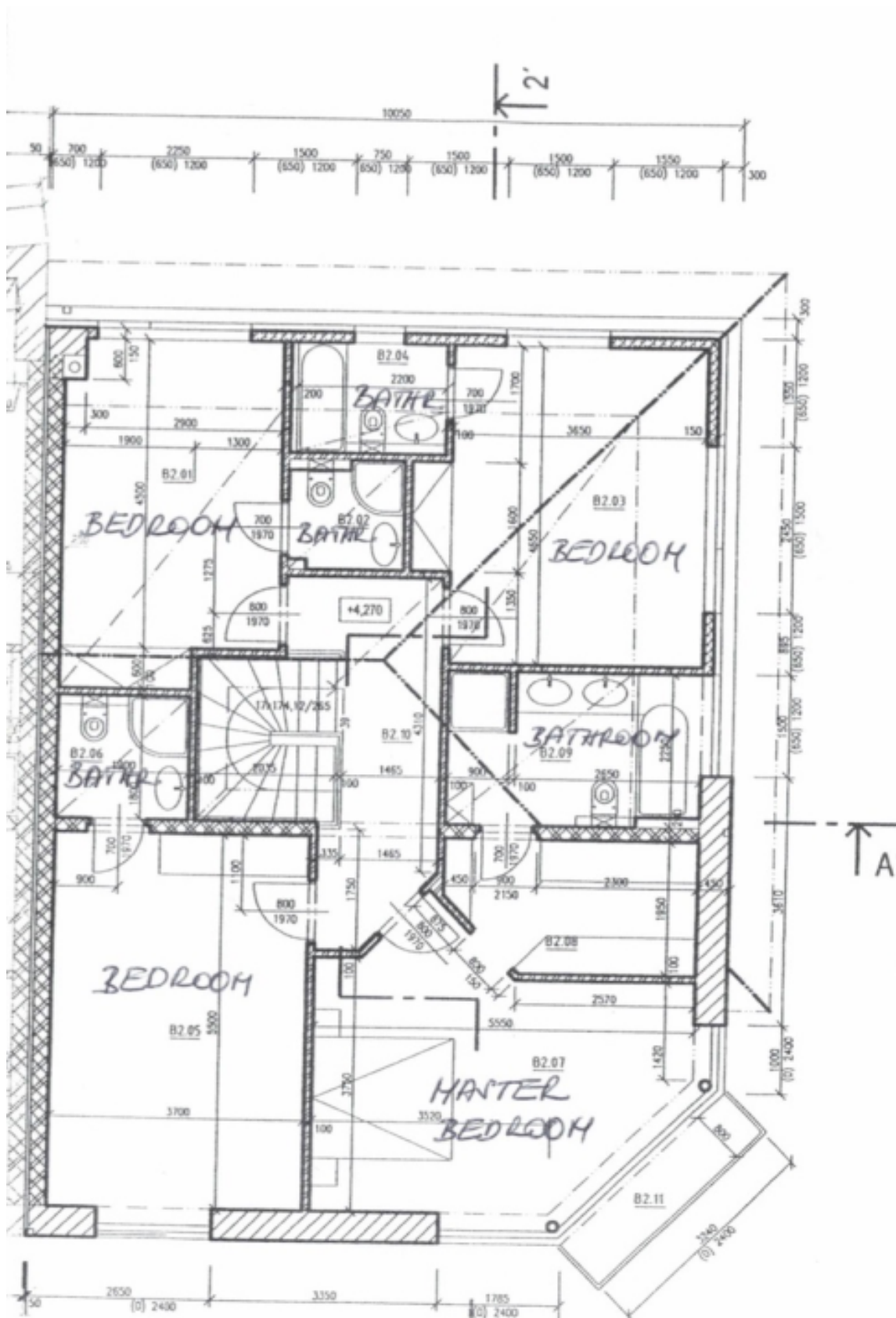




House Six-bedroom (7+1)

Rented

340 m², Praha 6, Nebušice, Nebušická





House Six-bedroom (7+1)

340 m², Praha 6, Nebušice, Nebušická

Rented

