



House Six-bedroom (7+1)

Rented

350 m², Praha 6, Nebušice, Nebušická





House Six-bedroom (7+1)

350 m², Praha 6, Nebušice, Nebušická

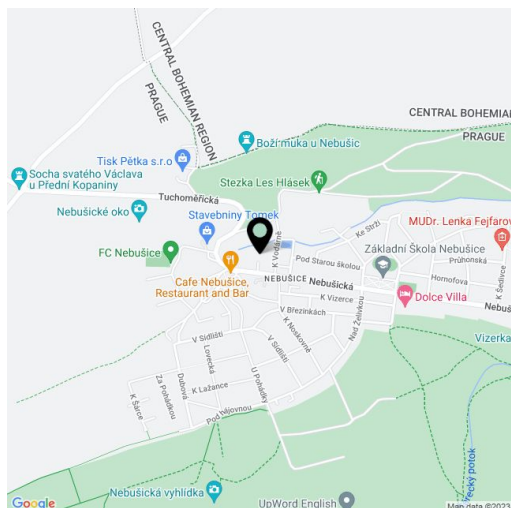
Rented

Plot	923 m ²
Foot print	149 m ²
Garden	774 m ²
Parking	Double garage with direct access to the house.
Garage	Yes
Cellar	-
PENB	G
Reference number	3552
Available from	Immediately

Sun-drenched semi-detached 6-bedroom 5-bathroom home with a nicely landscaped garden, currently available for rent. Located in a quiet residential neighborhood in Prague 6, in the vicinity of the wonderful Šárka Valley, just up the road from the International School of Prague.

Huge plate glass thermal insulated windows and sliding doors wrap around the corners of the house affording wonderful light and beautiful views of the adjacent forest. On the main floor, the home has a spacious entrance foyer, a large living room with terrace access and a separate dining area (split level), fully fitted kitchen with pantry, storage room and a guest toilet. Upstairs are four bedrooms all with en-suite bathrooms, three of them also with a walk in closet. There is a large family or entertainment room, two guest bedrooms, and a shower bathroom at the garden level.

Air-conditioning, parquet and heated tile floors, built-in storage, washer, dryer, phone, Internet and satellite TV connections. Alarm system monitored by security agency is possible. Double garage. Utilities CZK 12,000/month. Available from the turn of July and August.

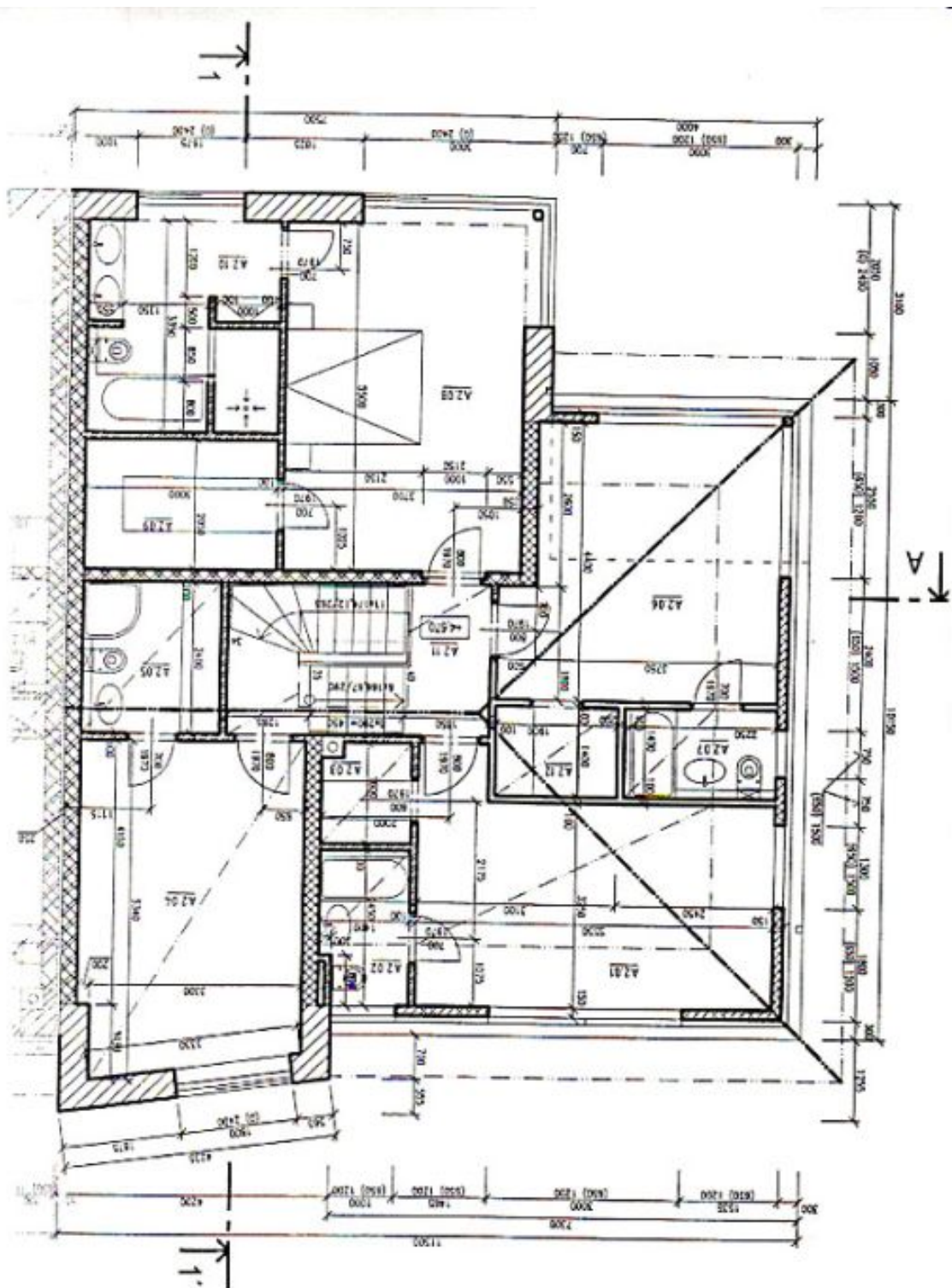




House Six-bedroom (7+1)

Rented

350 m², Praha 6, Nebušice, Nebušická





House Six-bedroom (7+1)

350 m², Praha 6, Nebušice, Nebušická

Rented

