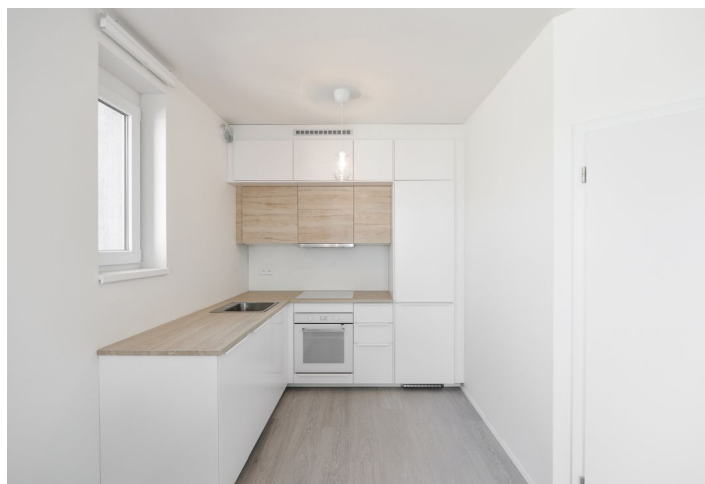




## Apartment One-bedroom (2+kk)

Rented

55 m<sup>2</sup>, Prague 10, Dolní Měcholupy, Honzíkova





## Apartment One-bedroom (2+kk)

Rented

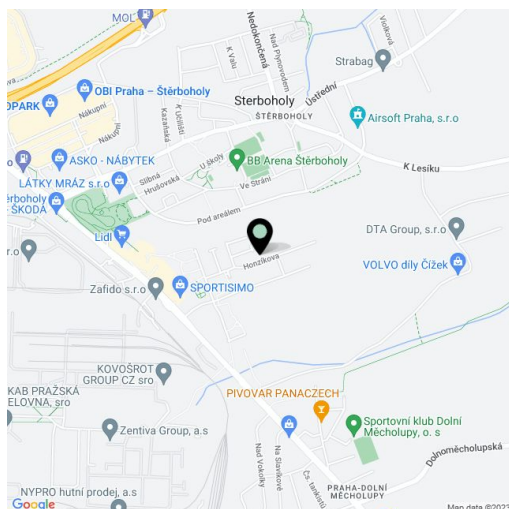
55 m<sup>2</sup>, Prague 10, Dolní Měcholupy, Honzíkova

Total area	60 m <sup>2</sup>
Floor area*	55 m <sup>2</sup>
Balcony	5 m <sup>2</sup>
Parking	-
Cellar	-
Service price	Deposit for services, water, and heating: CZK 3,300/month. Deposit for electricity: CZK 1,000/month.
PENB	G
Reference number	35541
Available from	Immediately

Benefiting from a balcony and far-reaching views, this apartment on the 6th floor of a modern building in a quiet and green residential part of Dolní Měcholupy, Prague 10, is located with good amenities in close vicinity and quick connections to the Prague Ring Road and the city center. Great access to the Mladá Boleslav, Liberec, and Hradec Králové highways, the nearest metro (Depo Hostivař, line A) is accessible by bus in five minutes. Conveniently located for the Hostivař Golf Club, Europark and Fashion Arena shopping malls, as well as local bike and jogging paths.

The apartment features a living room with a fully fitted open plan kitchen, dining area, and access to the balcony, a bedroom with built-in wardrobes, a bathroom with a bathtub and toilet, and an entrance hall with a built-in wardrobe and storage.

Vinyl floors, tiles, central heating, dishwasher, chip entry to the building, elevator.



\* Area of the unit according to the Civil Code. The area consists of the sum total area of the entire unit bounded by perimeter walls.