



**Office space**

Praha 1, Staré Město, náměstí Republiky

€ 30.00 / m² | CZK 759 / m²

Service price	130 CZK monthly per m ²
Available area	3 956 m ²
Cellar	-
Terrace	97 m ²
Parking	-
PENB	C
Reference number	35562

Office space for short-term rent until December 2019 in an administrative building on Náměstí Republiky Square. The building was built in 1905 by the architects Adolf Foehrer and Alfons Wertmuller. The area benefits from its central location and it is also the business and financial center of the city with direct connections to important local and long-distance transport networks.

Location:

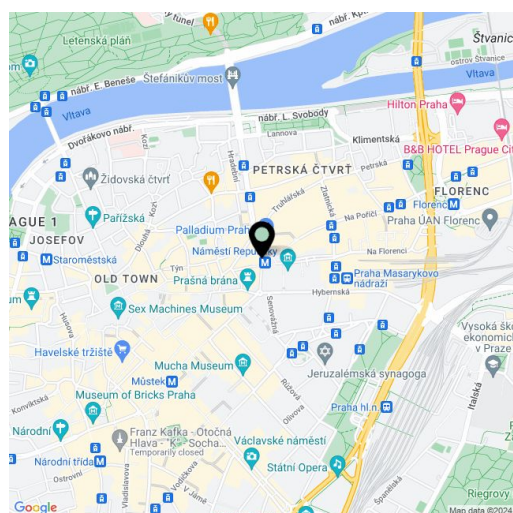
The building is located right next to a tram stop, close to the Namesti Republiky metro station (line B), the Masaryk train station, and the Na Florenci central bus station. It also has very good connections to the Václav Havel International Airport Prague and the D1 and D8 motorways. The Palladium shopping center and the Kotva department store are close-by.

Facilities and services:

- 24/7 reception
- 2 passenger lifts
- Available storage space
- Raised floors with floor boxes
- Openable windows
- Modern LED backlight
- Terrace
- Parking in the adjacent shopping centers

Available from Q4 2024.

Rental and service charges listed without VAT. Lessee pays no commission.





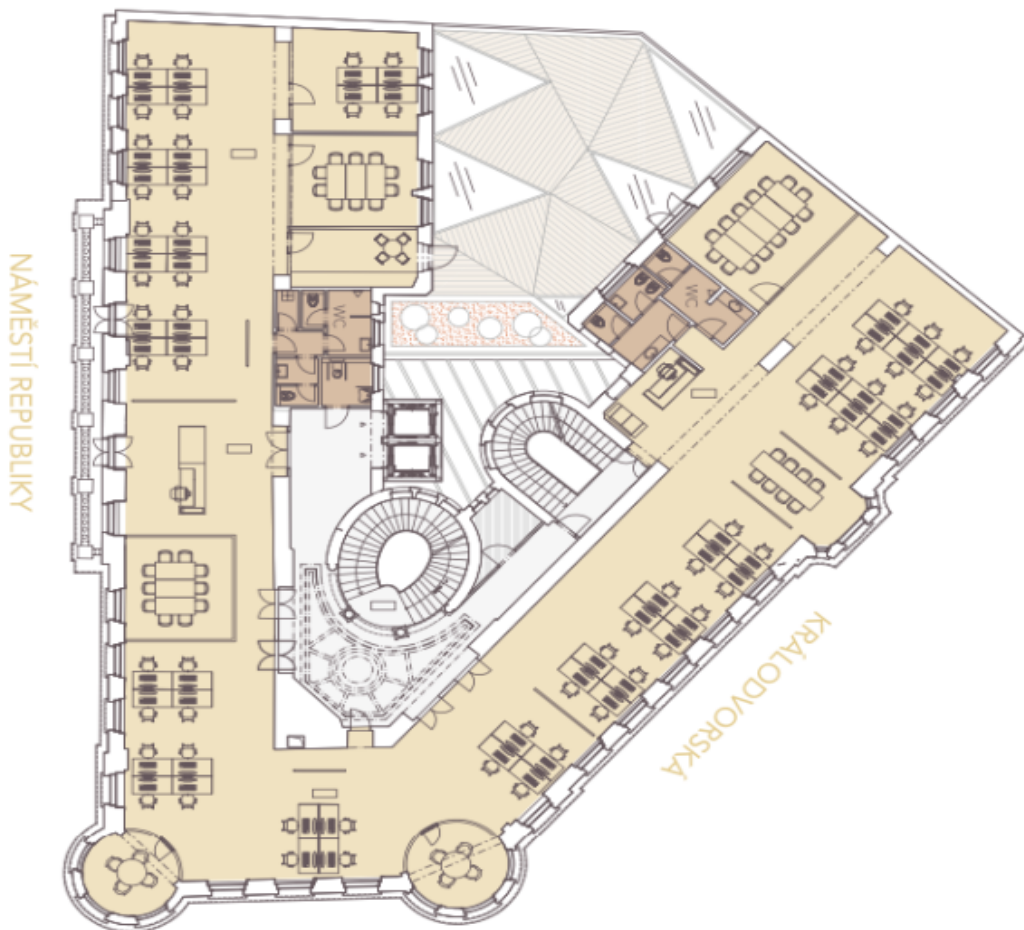
Second floor

OFFICE

608 sqm

TERRACE

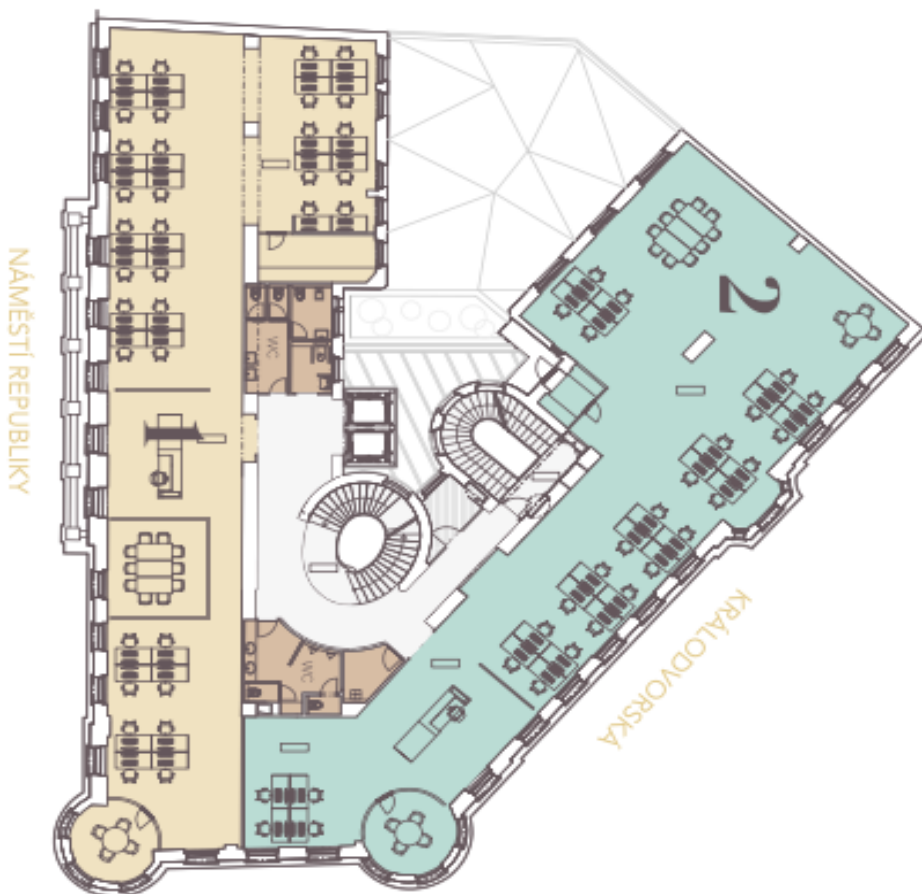
105 sqm





Third floor

OFFICE 1	306 sqm
OFFICE 2	328 sqm

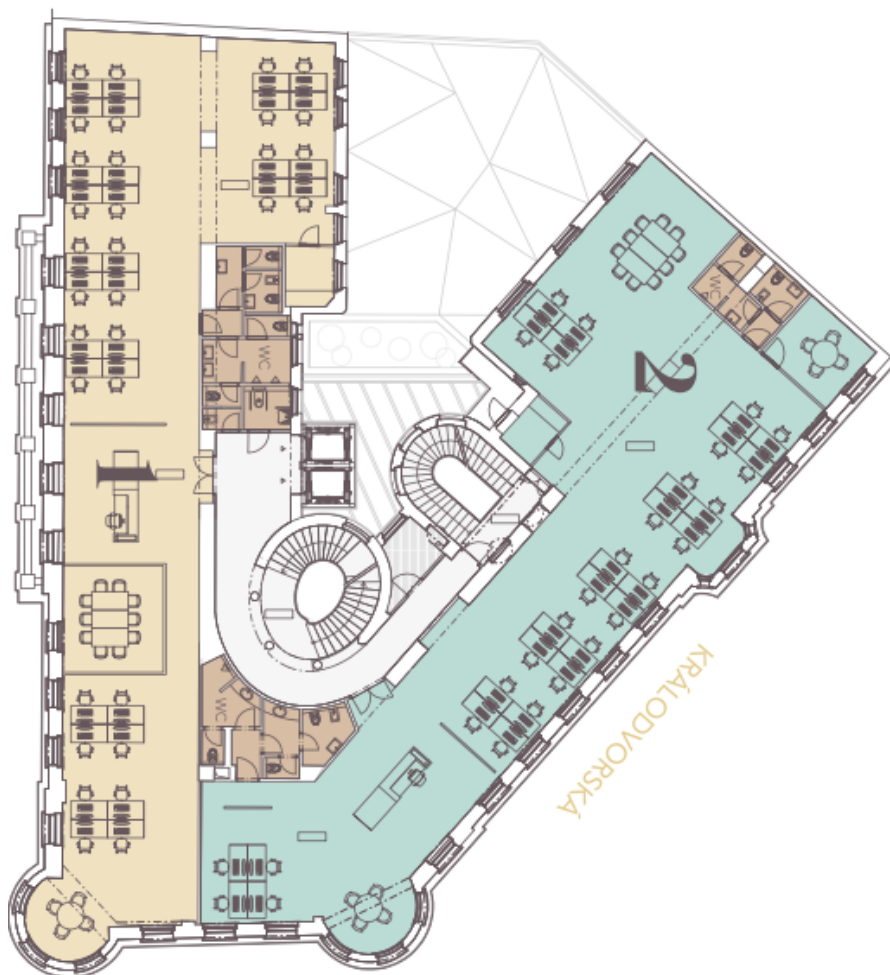




OFFICE 1
OFFICE 2

298 sqm
316 sqm

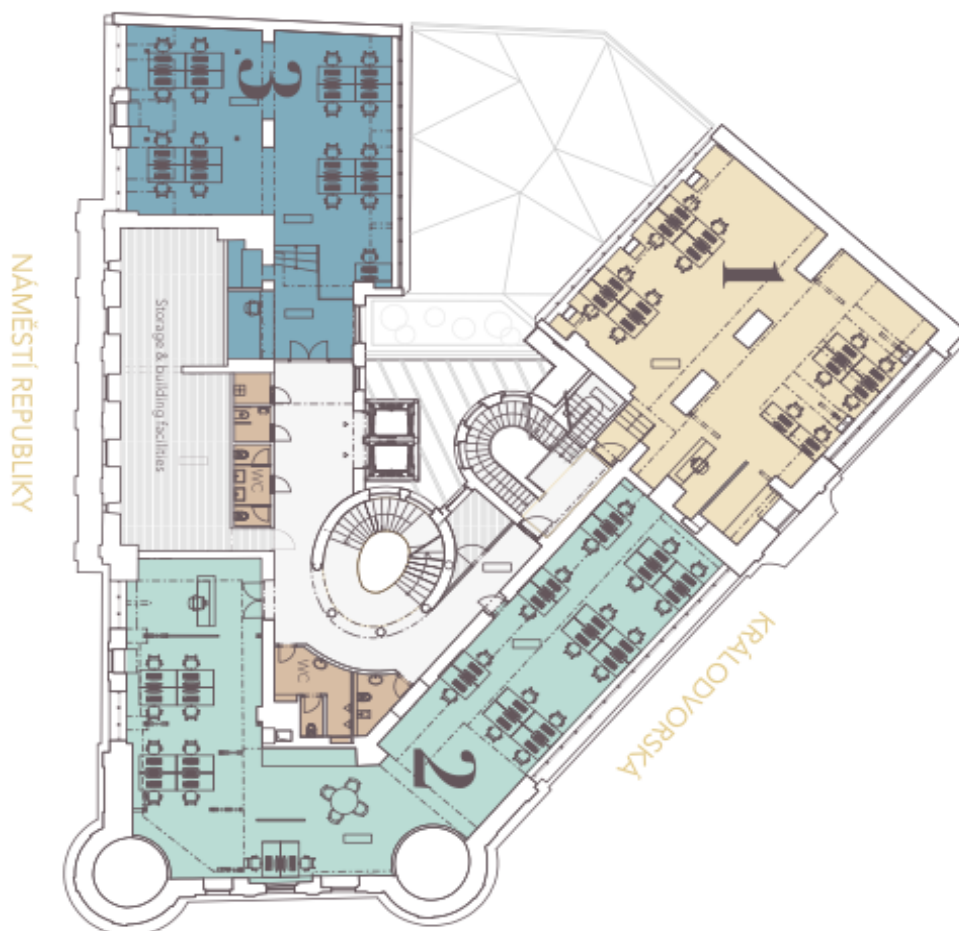
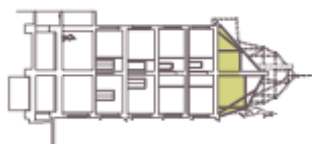
Fourth floor





Fifth floor

OFFICE 1	150 sqm
OFFICE 2	214 sqm
OFFICE 3	133 sqm

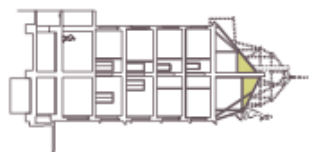




Office space

Praha 1, Staré Město, náměstí Republiky

€ 30.00 / m² | CZK 759 / m²



OFFICE 1

275 sqm

Sixth floor

