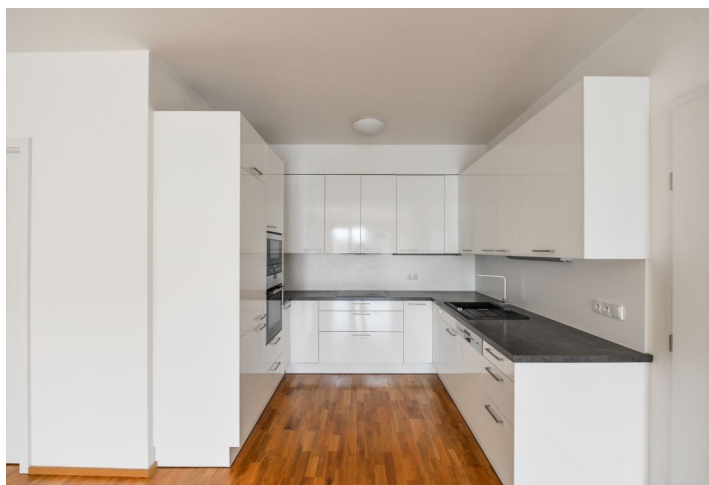
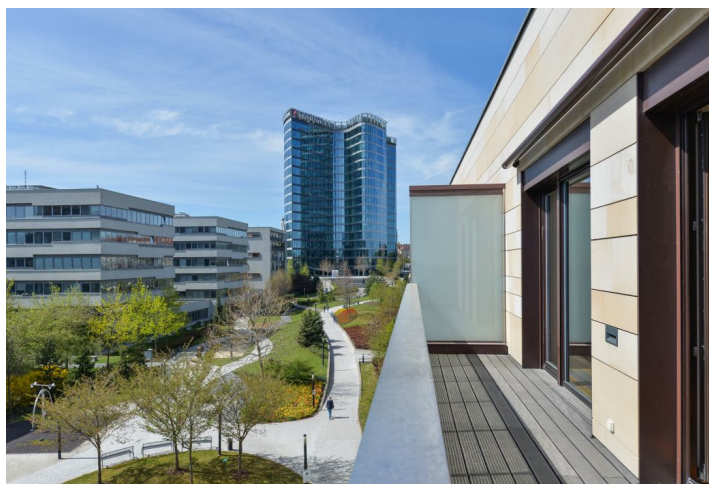




Apartment Three-bedroom (4+kk)

Rented

118.2 m², Praha 4, Michle, Baarova





Apartment Three-bedroom (4+kk)

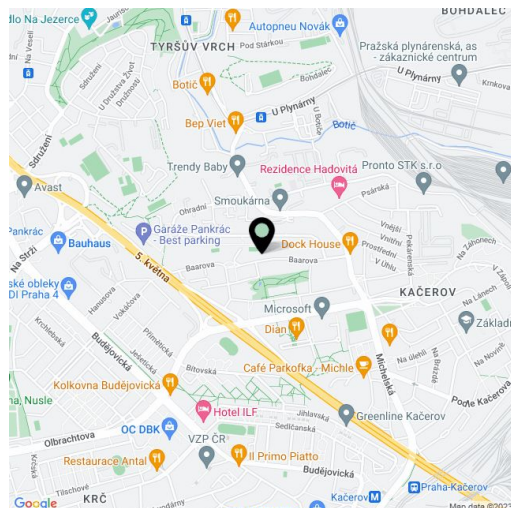
Rented118.2 m², Praha 4, Michle, Baarova

Total area	130 m ²
Floor area*	118 m ²
Terrace	12 m ²
Parking	Two garage parking spaces are included.
Garage	Yes
Cellar	Yes
PENB	B
Reference number	35601
Available from	Immediately

This contemporary 3-bedroom 2-bathroom apartment with a terrace is on the 3rd top floor of the recently built Residential Park Baarova complex with a 24/7 reception and security, a park, a children's playground, and underground parking. The residence is located in an area that offers a full range of amenities, near the BB Centrum and Brumlovka multipurpose centers, with bus connections to the Budějovická and Pankrác metro stations, and quick access to the city center.

The interior features a spacious living room with a fully fitted open plan kitchen and a dining area, three separate bedrooms, an en-suite bathroom (walk-in shower, toilet), a family bathroom (bathtub, toilet, bidet), a utility room, an additional separate toilet, and an entrance hall with built-in wardrobes. The **terrace** is accessible from the living room and one bedroom.

Hardwood parquet floors, tiles, security entry door, built-in storage, blinds, terrace awning, central heating, dishwasher, microwave oven, **cellar** (10 m²), chip entry to the building, bike and pram storage. **Two garage parking spaces** are included. Monthly deposit for service charges, water and heating: CZK 7800. Deposit for electricity is billed separately.



* Area of the unit according to the Civil Code. The area consists of the sum total area of the entire unit bounded by perimeter walls.